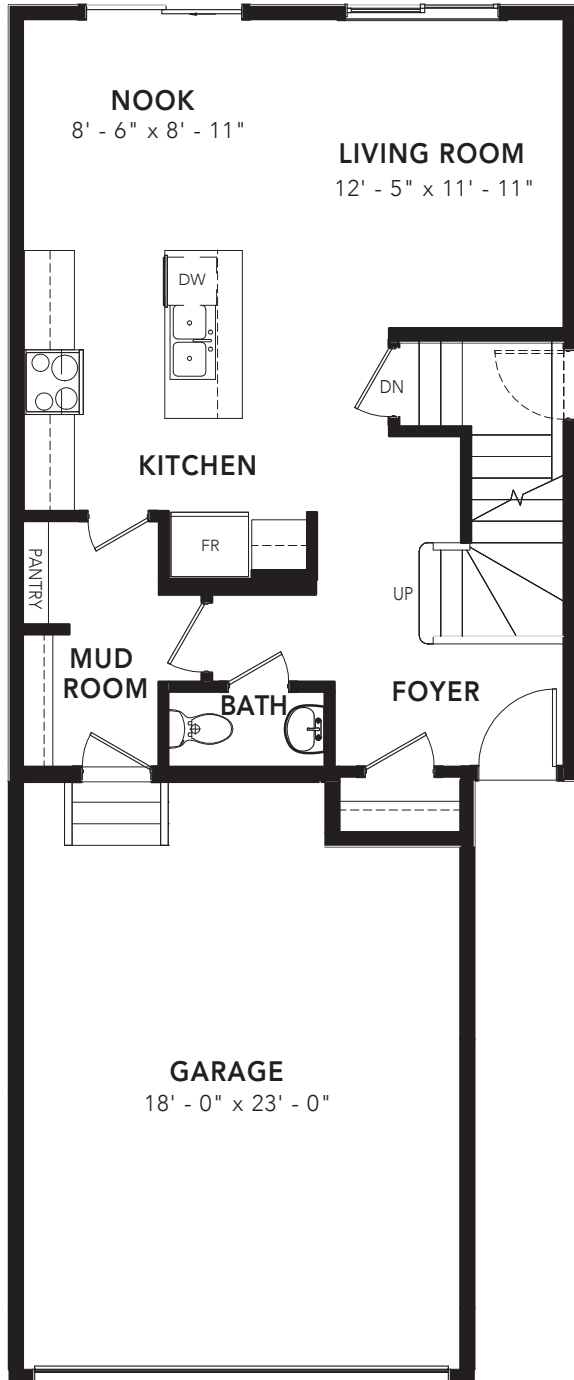


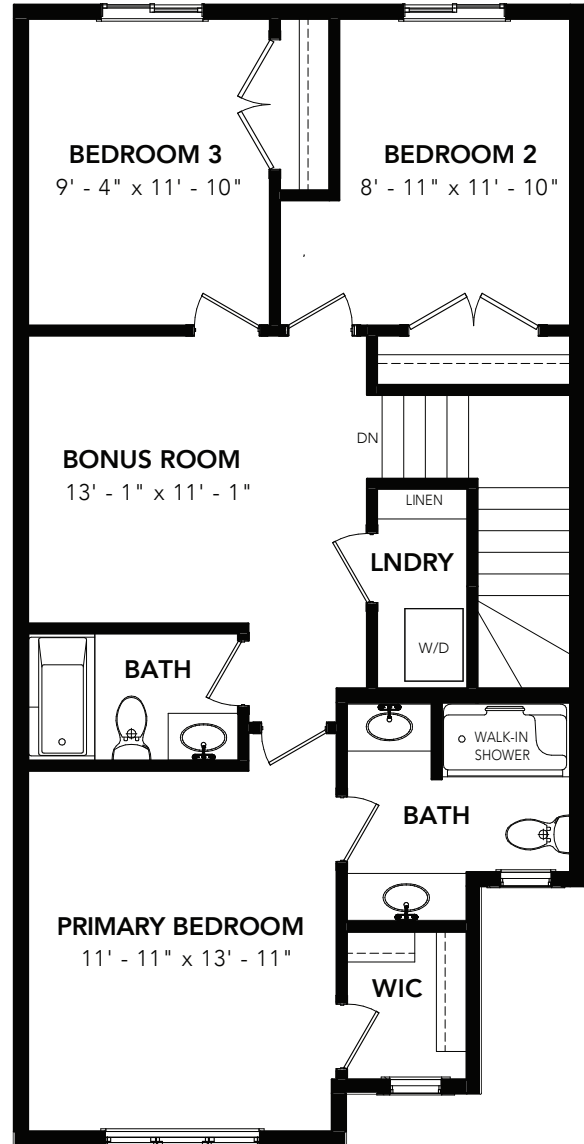


ARCTIC WILLOW

3 BEDS 2.5 BATHS 1593 SQ FT 22' WIDE



MAIN FLOOR : 675 SQ FT



SECOND FLOOR: 918 SQ FT

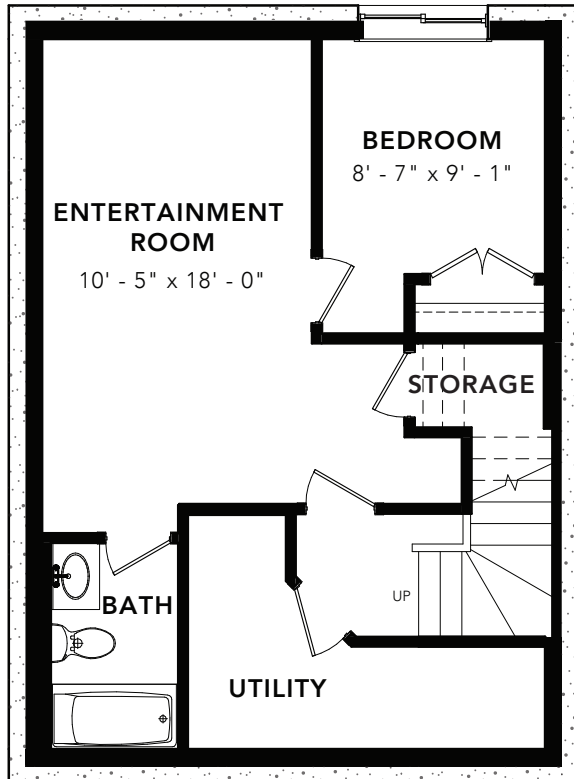


© 2024 Landmark Group of Companies Inc. All rights reserved. Any use or reproduction in whole or in part of these promotional materials without the prior written authorization of Landmark Group of Companies Inc. is strictly prohibited. Floor plans, specifications, pricing and dimensions shown are approximate and subject to change without notice. Artist rendering shown. Interior room dimensions are taken from inside of walls. Garage dimensions are taken from outside of walls. Revised on 01/16/2024.

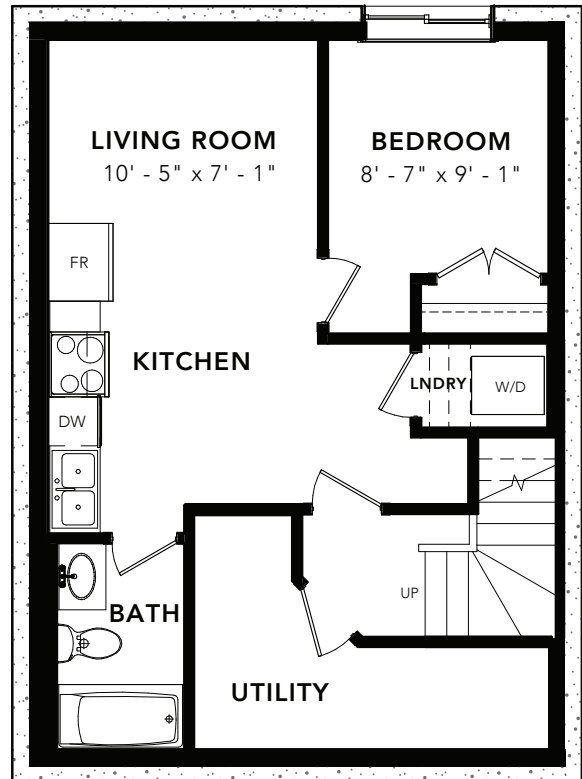
ARCTIC WILLOW

OPTIONS

3 BEDS 2.5 BATHS 1593 SQ FT 22' WIDE



BASEMENT DEVELOPMENT OPTION: 447 SQ FT



BASEMENT SUITE OPTION: 447 SQ FT