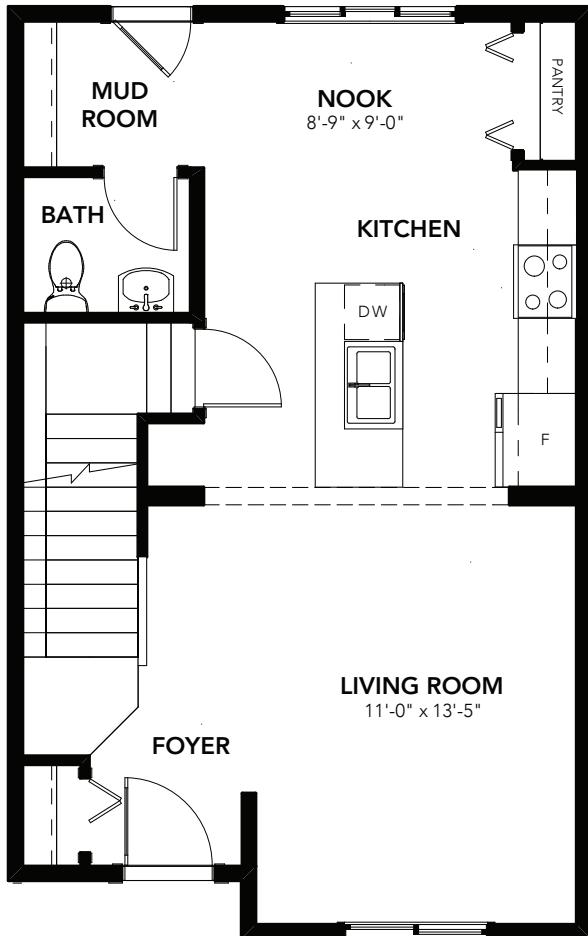
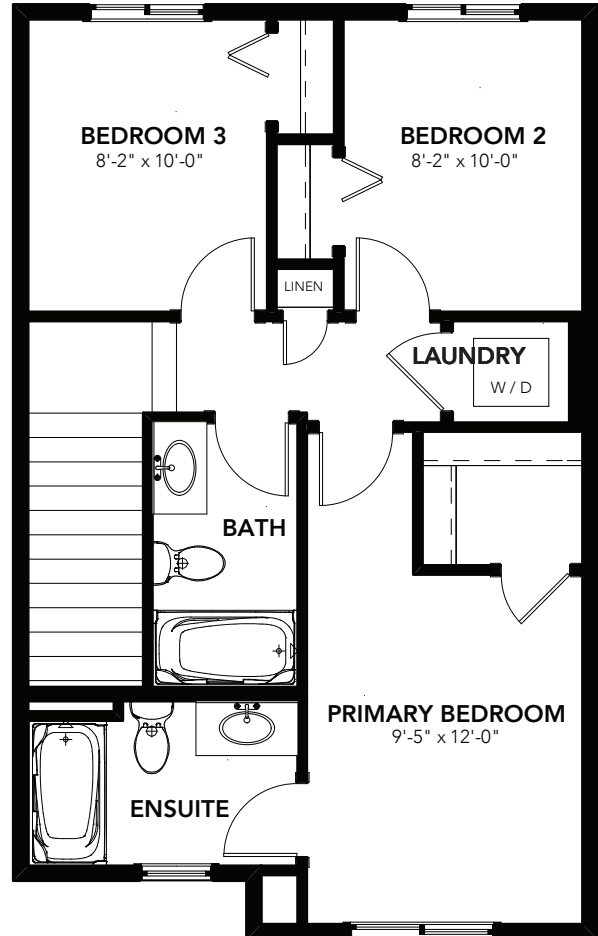


BELIZE

3 BEDS
2.5 BATHS
1248 SQ FT
20' WIDE



MAIN: 624 SQ FT



SECOND: 624 SQ FT

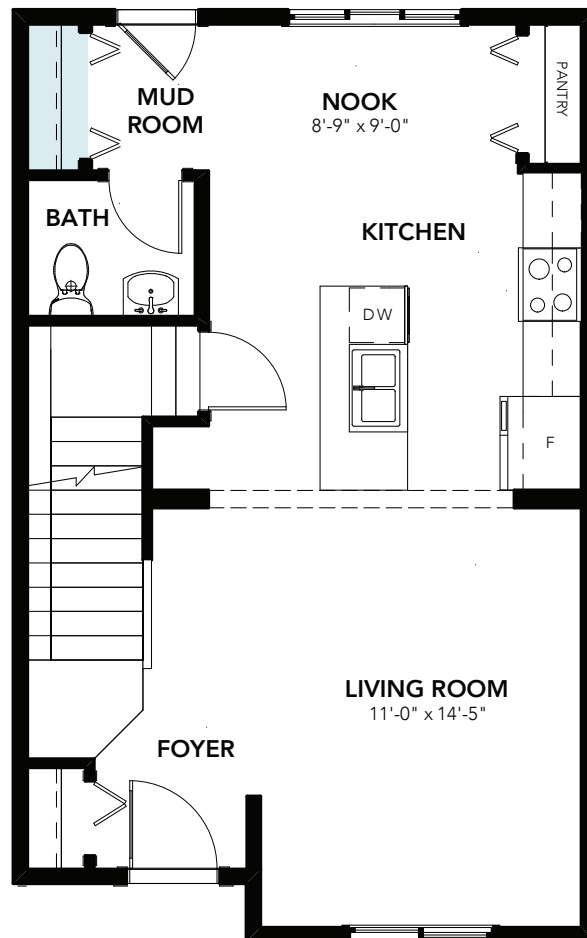


© 2023 Landmark Group of Companies Inc. All rights reserved. Any use or reproduction in whole or in part of these promotional materials without the prior written authorization of Landmark Group of Companies Inc. is strictly prohibited. Floor plans, specifications, pricing and dimensions shown are approximate and subject to change without notice. Artist rendering shown. Interior room dimensions are taken from inside of walls. Garage dimensions are taken from outside of walls. Revised on 02/21/2023.

BELIZE

OPTIONS

3 BEDS
2.5 BATHS
1248 SQ FT
20' WIDE



MAIN FLOOR CLOSET OPTION: 624 SQ FT

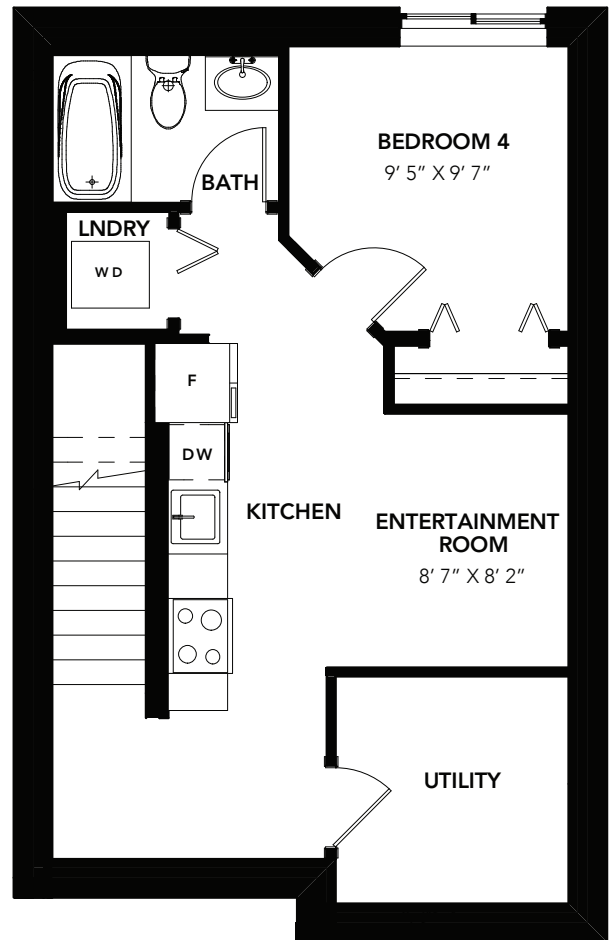
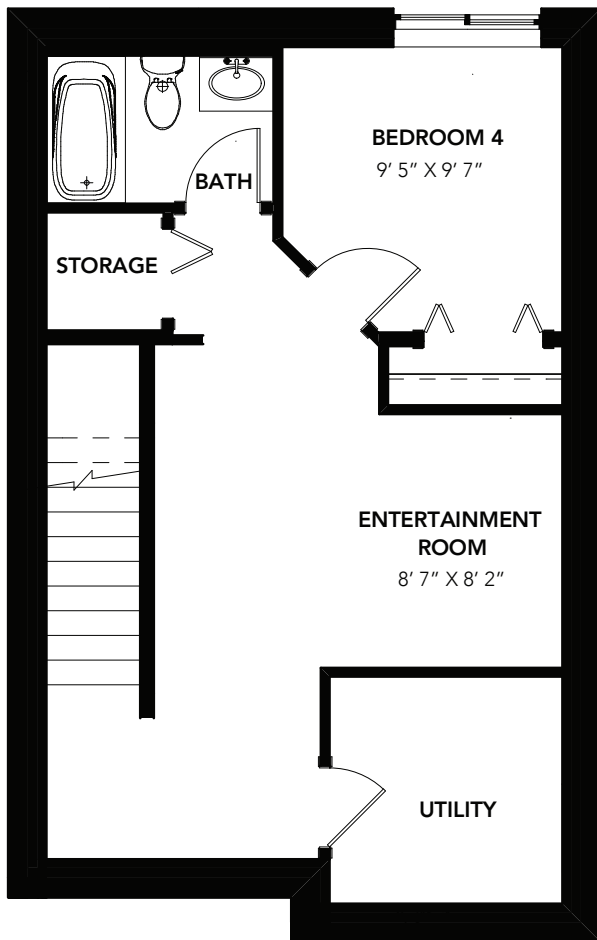


© 2023 Landmark Group of Companies Inc. All rights reserved. Any use or reproduction in whole or in part of these promotional materials without the prior written authorization of Landmark Group of Companies Inc. is strictly prohibited. Floor plans, specifications, pricing and dimensions shown are approximate and subject to change without notice. Artist rendering shown. Interior room dimensions are taken from inside of walls. Garage dimensions are taken from outside of walls. Revised on 02/21/2023.

BELIZE

OPTIONS

3 BEDS
2.5 BATHS
1248 SQ FT
20' WIDE



BASEMENT DEVELOPMENT OPTION: 432 SQ FT

BASEMENT SUITE OPTION: 432 SQ FT



© 2023 Landmark Group of Companies Inc. All rights reserved. Any use or reproduction in whole or in part of these promotional materials without the prior written authorization of Landmark Group of Companies Inc. is strictly prohibited. Floor plans, specifications, pricing and dimensions shown are approximate and subject to change without notice. Artist rendering shown. Interior room dimensions are taken from inside of walls. Garage dimensions are taken from outside of walls. Revised on 02/21/2023.