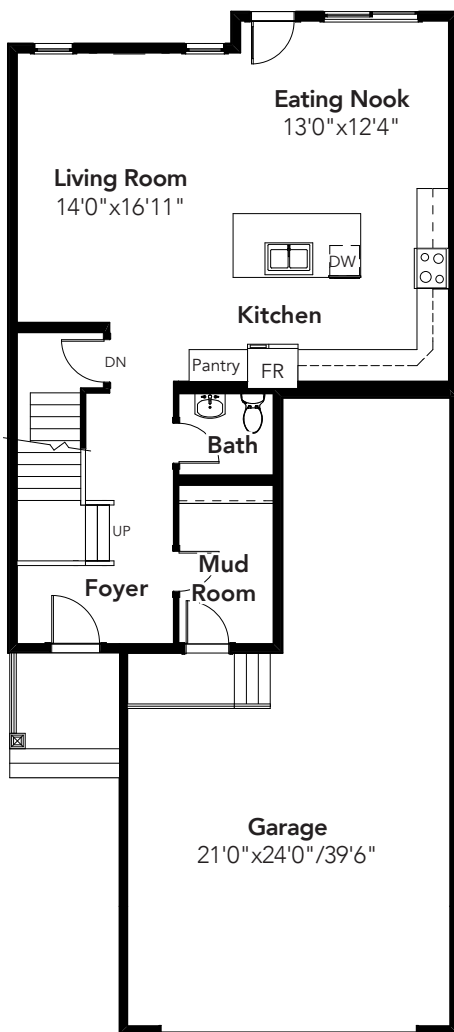
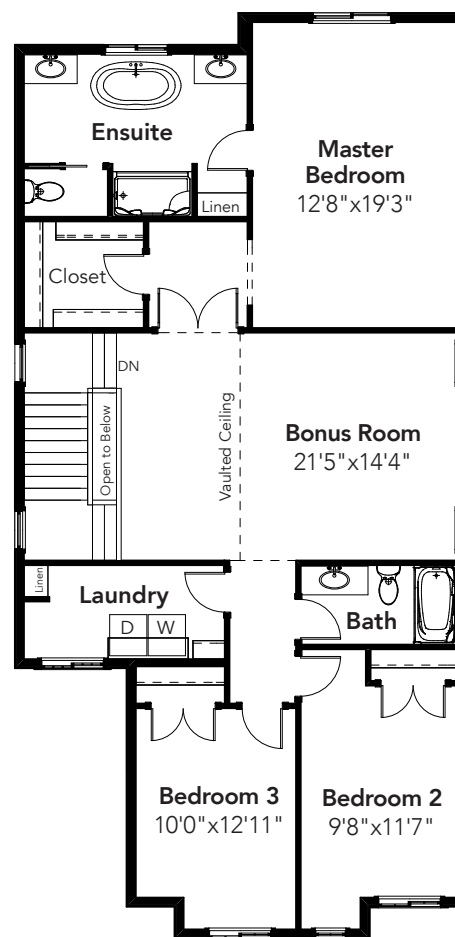


DUBAI

3 BEDS
2.5 BATHS
2365 SQ FT
28' WIDE



MAIN: 916 SQ FT



SECOND: 1449 SQ FT

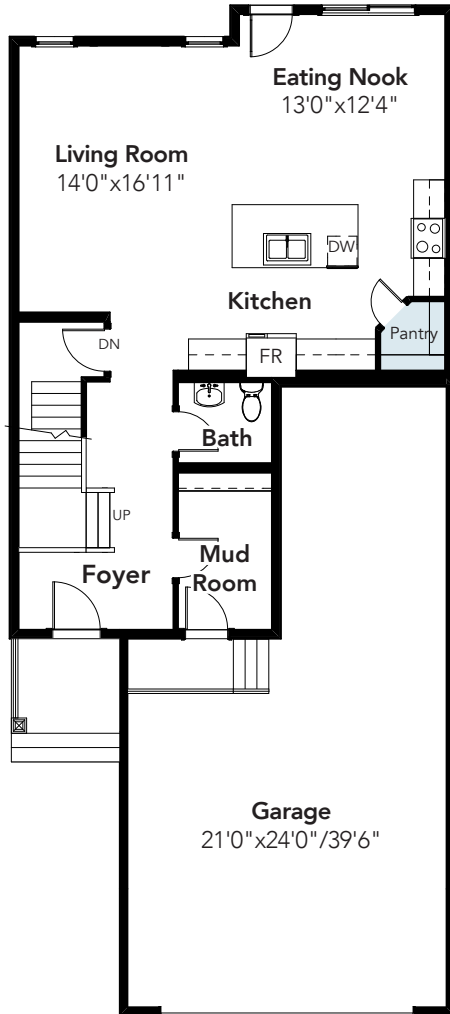


© 2019 Landmark Group of Companies Inc. All rights reserved. Any use or reproduction in whole or in part of these promotional materials without the prior written authorization of Landmark Group of Companies Inc. is strictly prohibited. Floor plans, specifications, pricing and dimensions shown are approximate and subject to change without notice. Artist rendering shown. Interior room dimensions are taken from inside of walls. Garage dimensions are taken from outside of walls. Revised October 30, 2017.

DUBAI

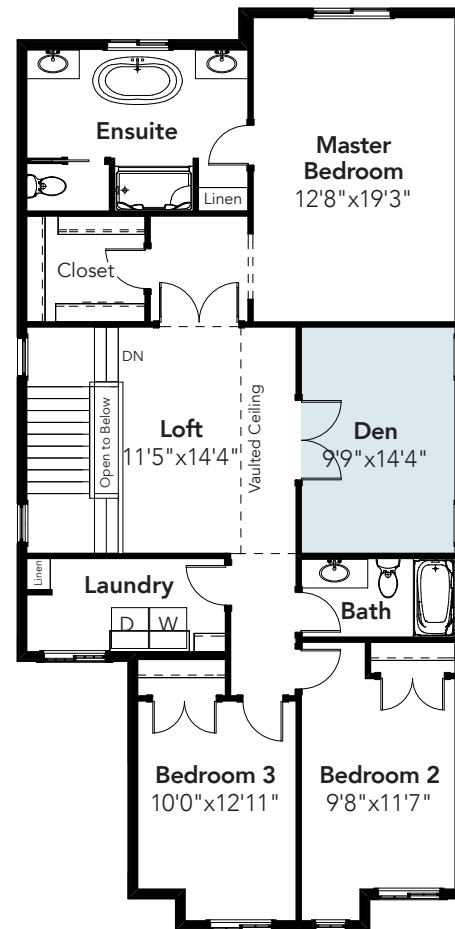
OPTIONS

PANTRY OPTION



MAIN: 916 SQ FT

DEN OPTION

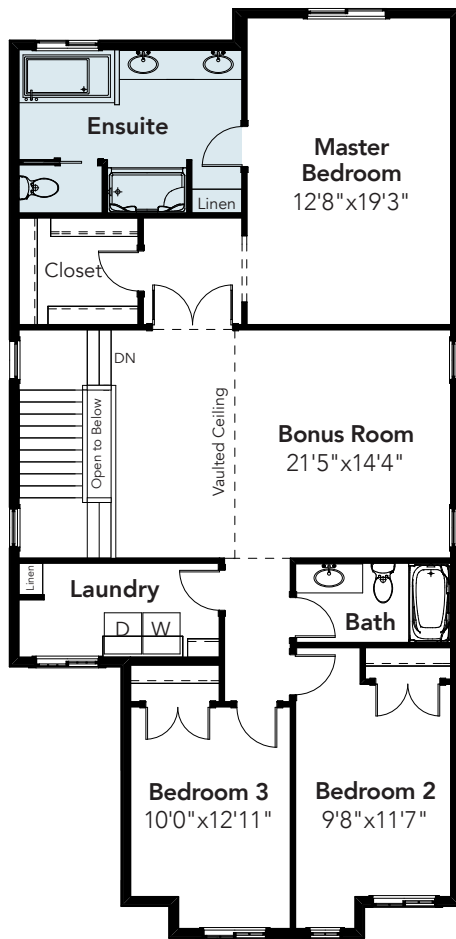


SECOND: 1449 SQ FT

DUBAI

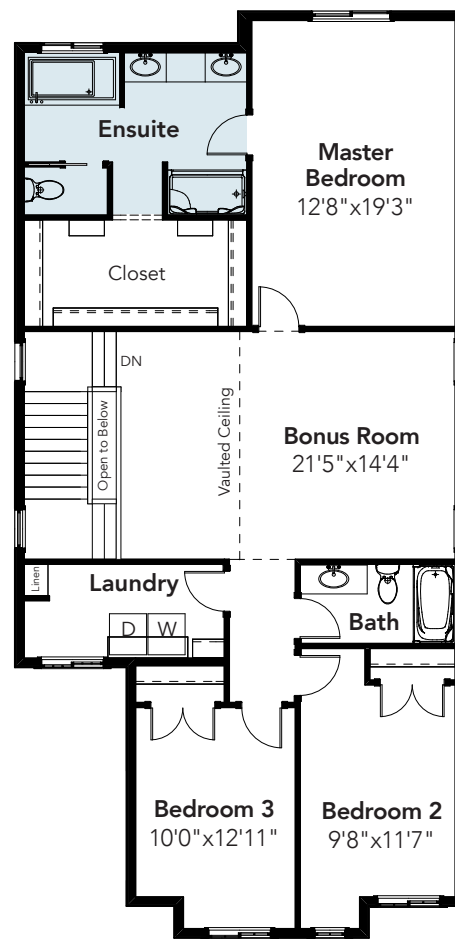
OPTIONS

ENSUITE OPTION



SECOND: 1449 SQ FT

ENSUITE OPTION 2

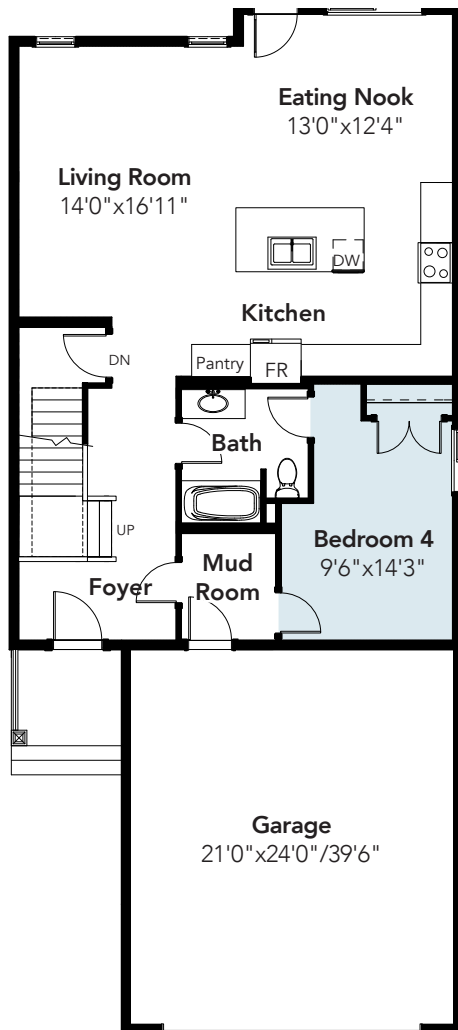


SECOND: 1449 SQ FT

DUBAI

OPTIONS

4TH BEDROOM OPTION



MAIN: 1092 SQ FT