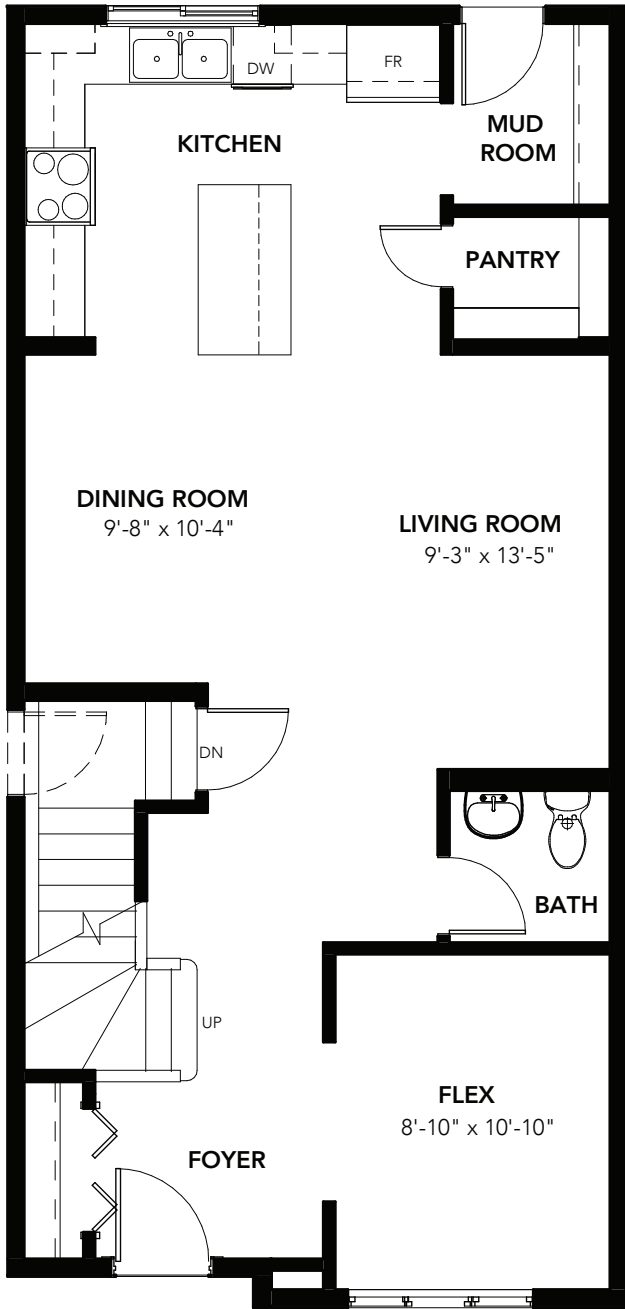
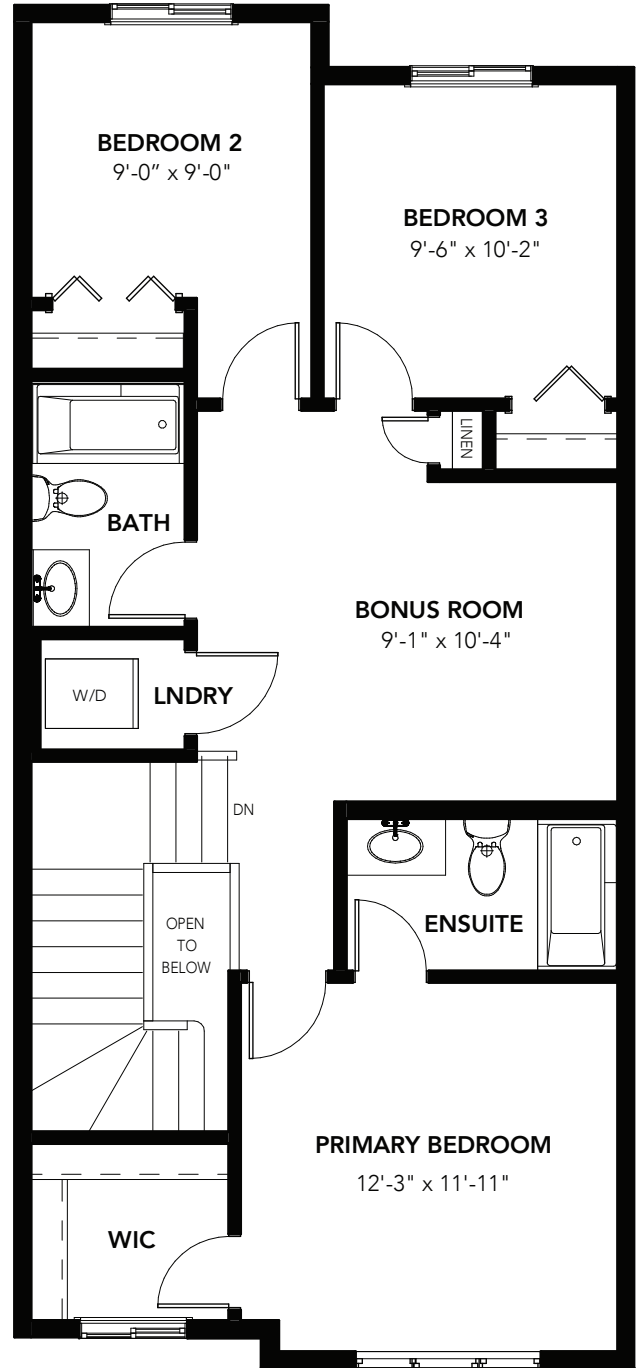


FORT-G

3 BEDS 2.5 BATHS 1673 SQ FT 20' WIDE



MAIN FLOOR: 832 SQ FT



SECOND FLOOR: 840 SQ FT

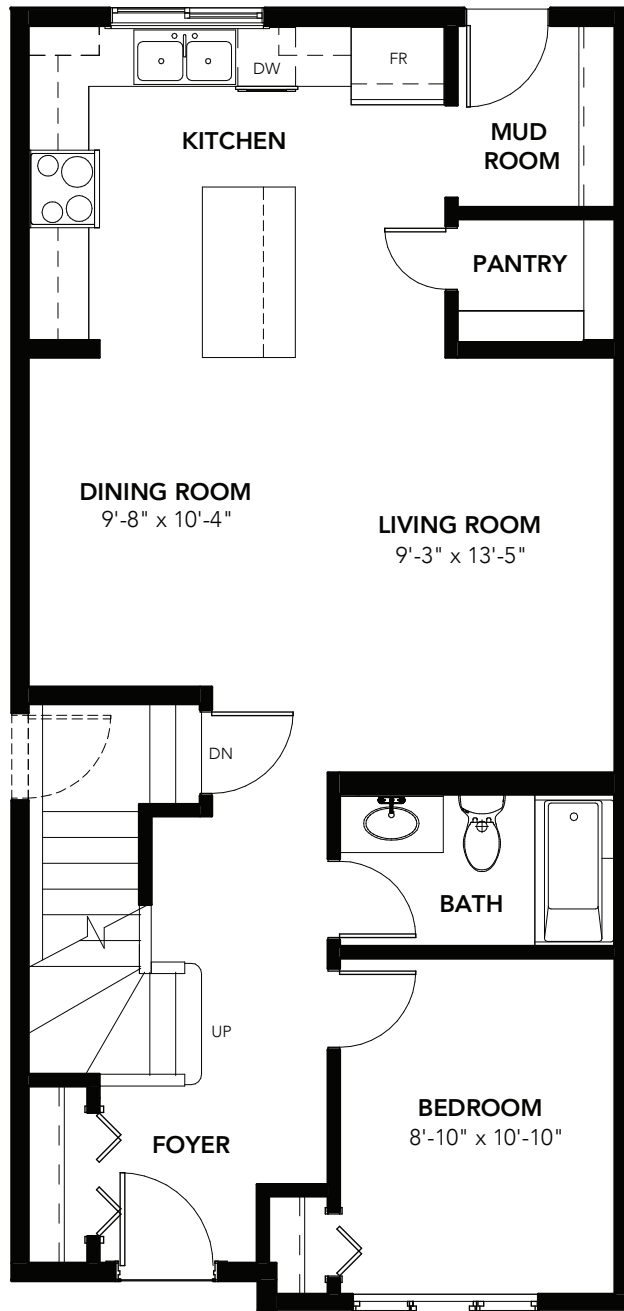


© 2024 Landmark Group of Companies Inc. All rights reserved. Any use or reproduction in whole or in part of these promotional materials without the prior written authorization of Landmark Group of Companies Inc. is strictly prohibited. Floor plans, specifications, pricing and dimensions shown are approximate and subject to change without notice. Artist rendering shown. Interior room dimensions are taken from inside of walls. Garage dimensions are taken from outside of walls. Revised on 07/16/2024.

FORT-G

OPTIONS

3 BEDS 2.5 BATHS 1673 SQ FT 20' WIDE



MAIN FLOOR FULL BATH OPTION: 832 SQ FT

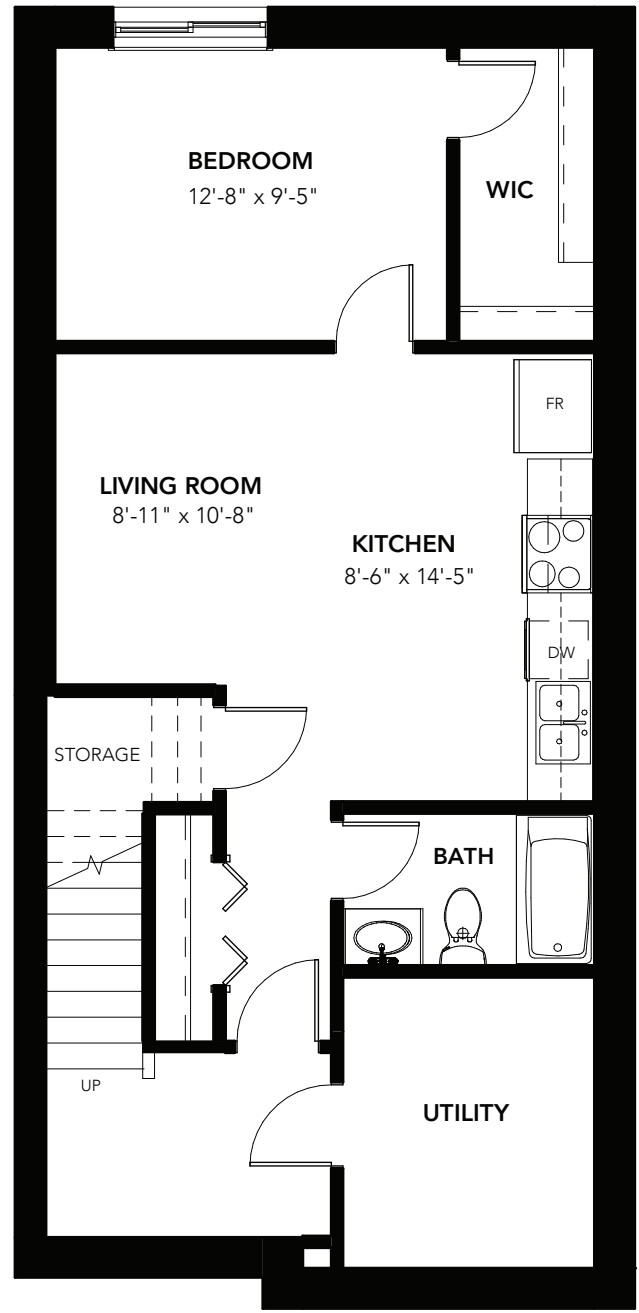
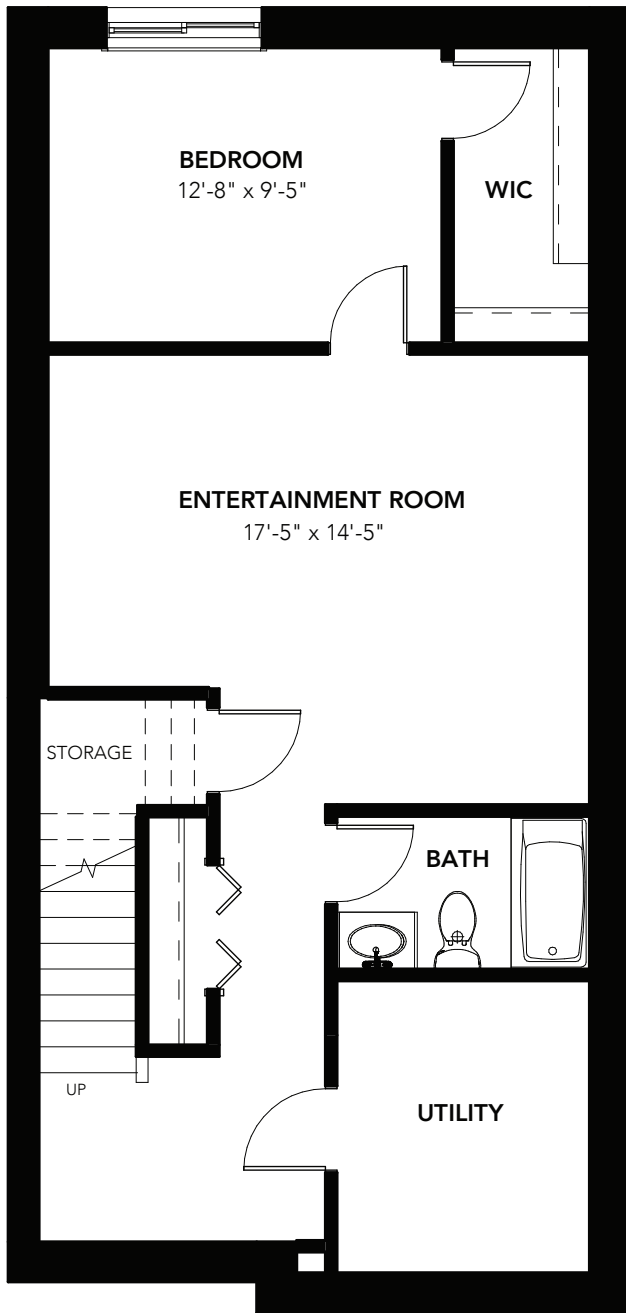


© 2024 Landmark Group of Companies Inc. All rights reserved. Any use or reproduction in whole or in part of these promotional materials without the prior written authorization of Landmark Group of Companies Inc. is strictly prohibited. Floor plans, specifications, pricing and dimensions shown are approximate and subject to change without notice. Artist rendering shown. Interior room dimensions are taken from inside of walls. Garage dimensions are taken from outside of walls. Revised on 07/16/2024.

FORT-G

OPTIONS

3 BEDS 2.5 BATHS 1673 SQ FT 20' WIDE



BASEMENT DEVELOPMENT OPTION: 613 SQ FT

BASEMENT SUITE OPTION: 613 SQ FT



© 2024 Landmark Group of Companies Inc. All rights reserved. Any use or reproduction in whole or in part of these promotional materials without the prior written authorization of Landmark Group of Companies Inc. is strictly prohibited. Floor plans, specifications, pricing and dimensions shown are approximate and subject to change without notice. Artist rendering shown. Interior room dimensions are taken from inside of walls. Garage dimensions are taken from outside of walls. Revised on 07/16/2024.