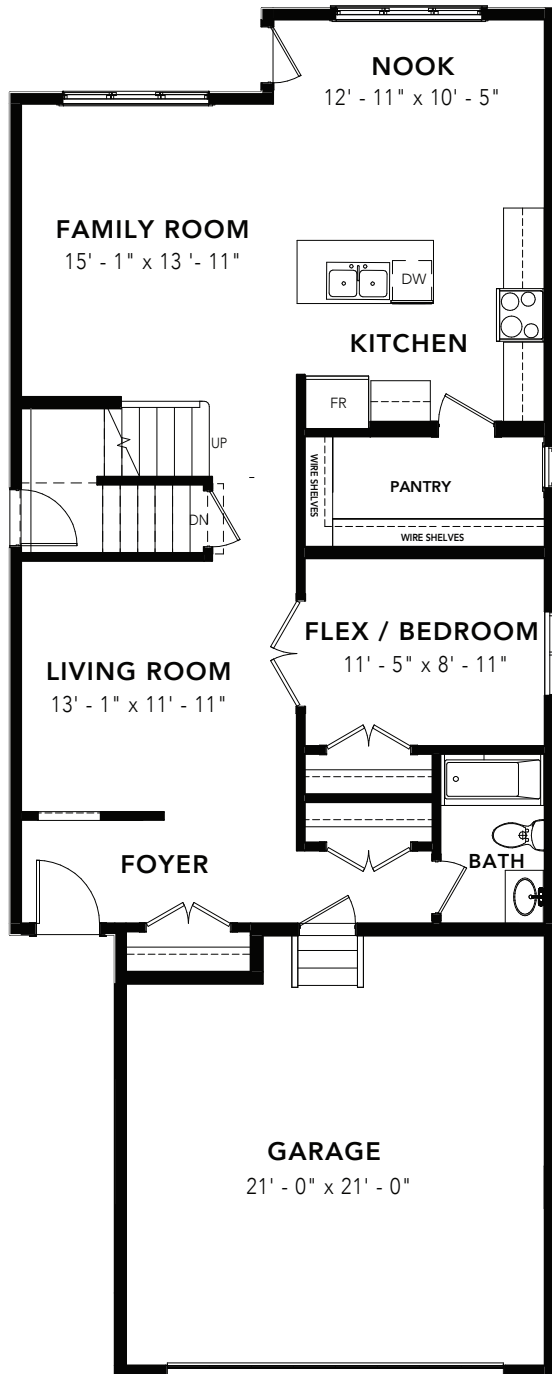


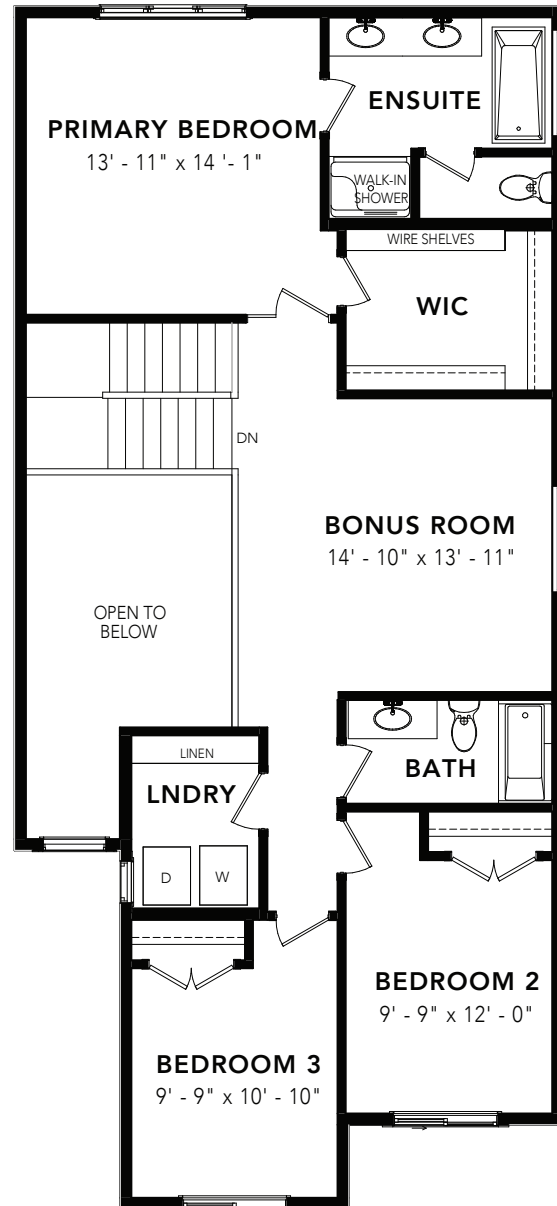
GOLD MAPLE



4 BEDS 3 BATHS 2327 SQ FT 26' WIDE



MAIN FLOOR : 1112 SQ FT



SECOND FLOOR: 1215 SQ FT

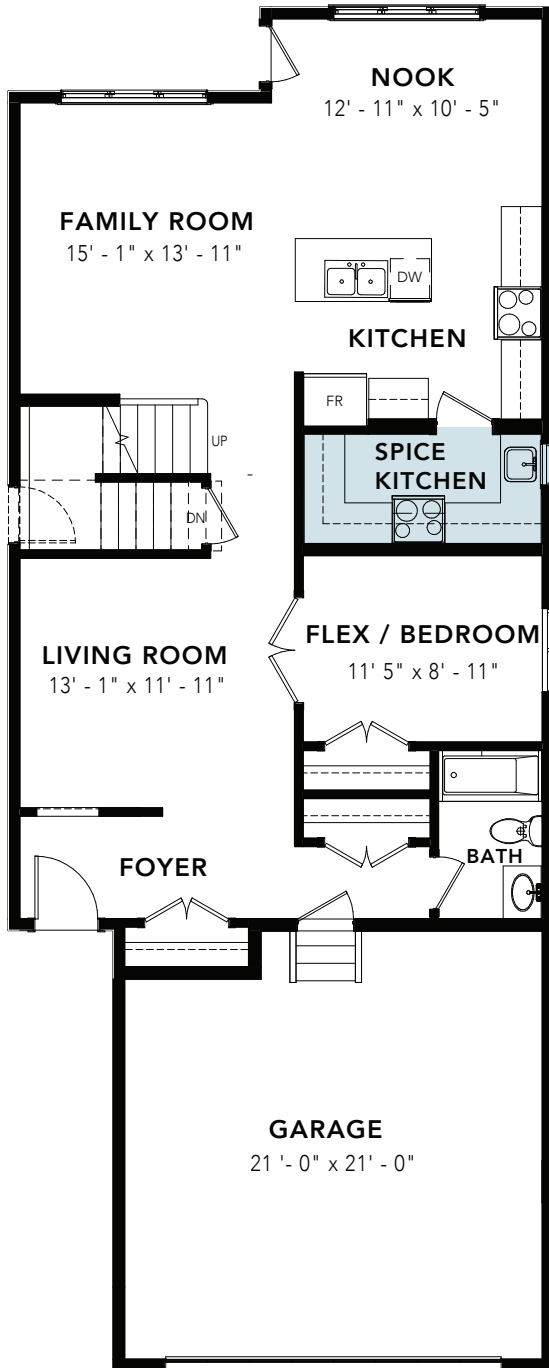


© 2024 Landmark Group of Companies Inc. All rights reserved. Any use or reproduction in whole or in part of these promotional materials without the prior written authorization of Landmark Group of Companies Inc. is strictly prohibited. Floor plans, specifications, pricing and dimensions shown are approximate and subject to change without notice. Artist rendering shown. Interior room dimensions are taken from inside of walls. Garage dimensions are taken from outside of walls. Revised on 01/16/2024.

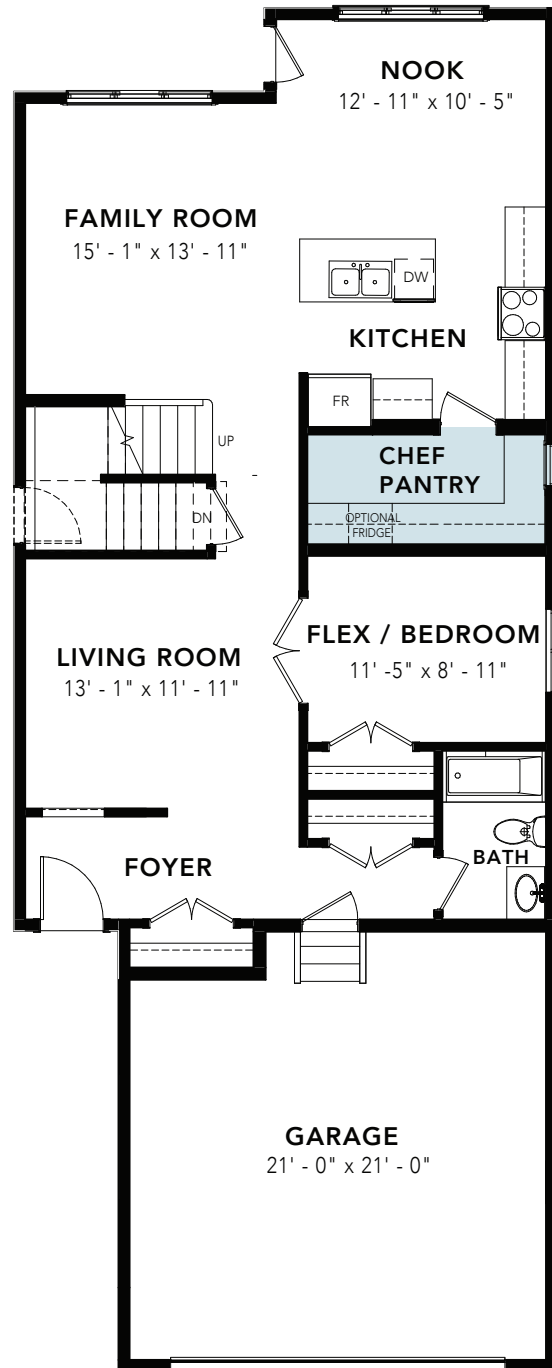
GOLD MAPLE

OPTIONS

4 BEDS 3 BATHS 2327 SQ FT 26' WIDE



SPICE KITCHEN OPTION : 1112 SQ FT

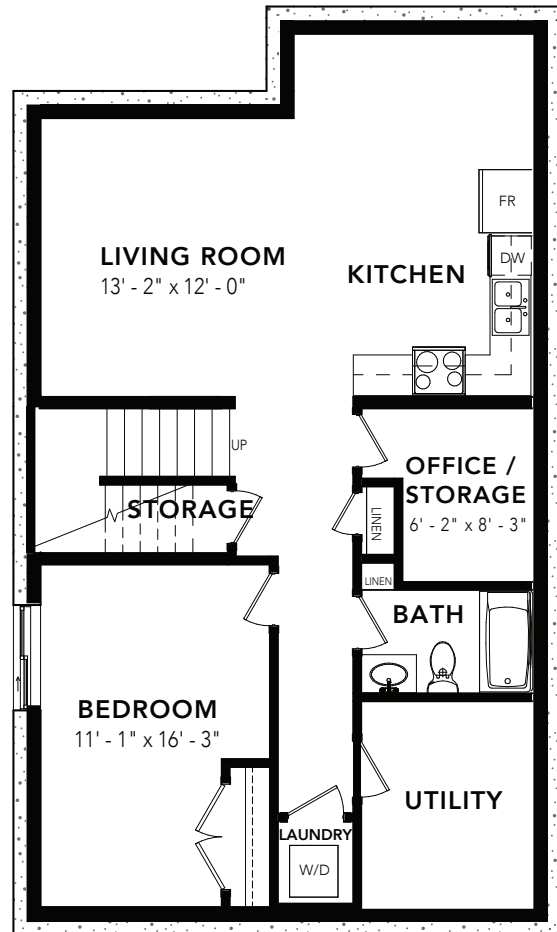
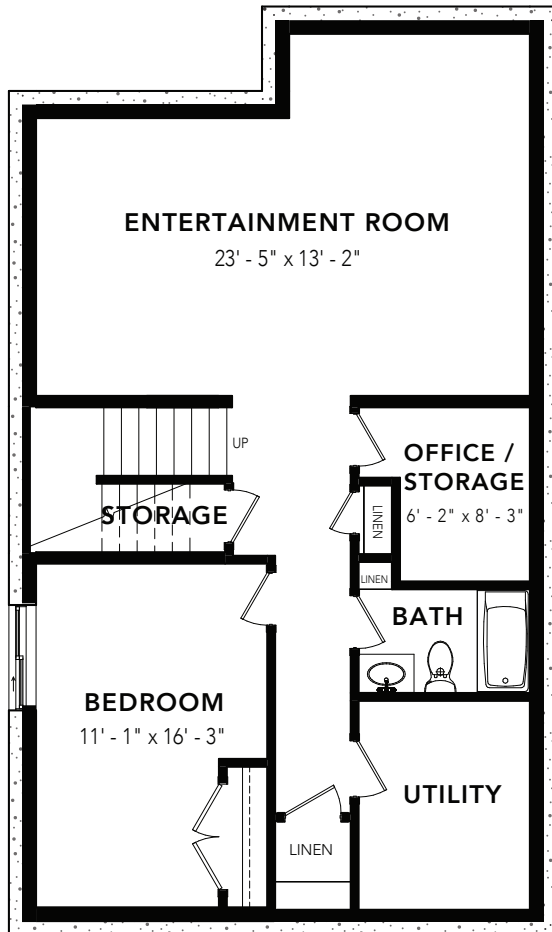


CHEF PANTRY OPTION: 1215 SQ FT

GOLD MAPLE

OPTIONS

4 BEDS 3 BATHS 2327 SQ FT 26' WIDE



BASEMENT DEVELOPMENT OPTION: 850 SQ FT

BASEMENT SUITE OPTION: 850 SQ FT



© 2024 Landmark Group of Companies Inc. All rights reserved. Any use or reproduction in whole or in part of these promotional materials without the prior written authorization of Landmark Group of Companies Inc. is strictly prohibited. Floor plans, specifications, pricing and dimensions shown are approximate and subject to change without notice. Artist rendering shown. Interior room dimensions are taken from inside of walls. Garage dimensions are taken from outside of walls. Revised on 01/16/2024.