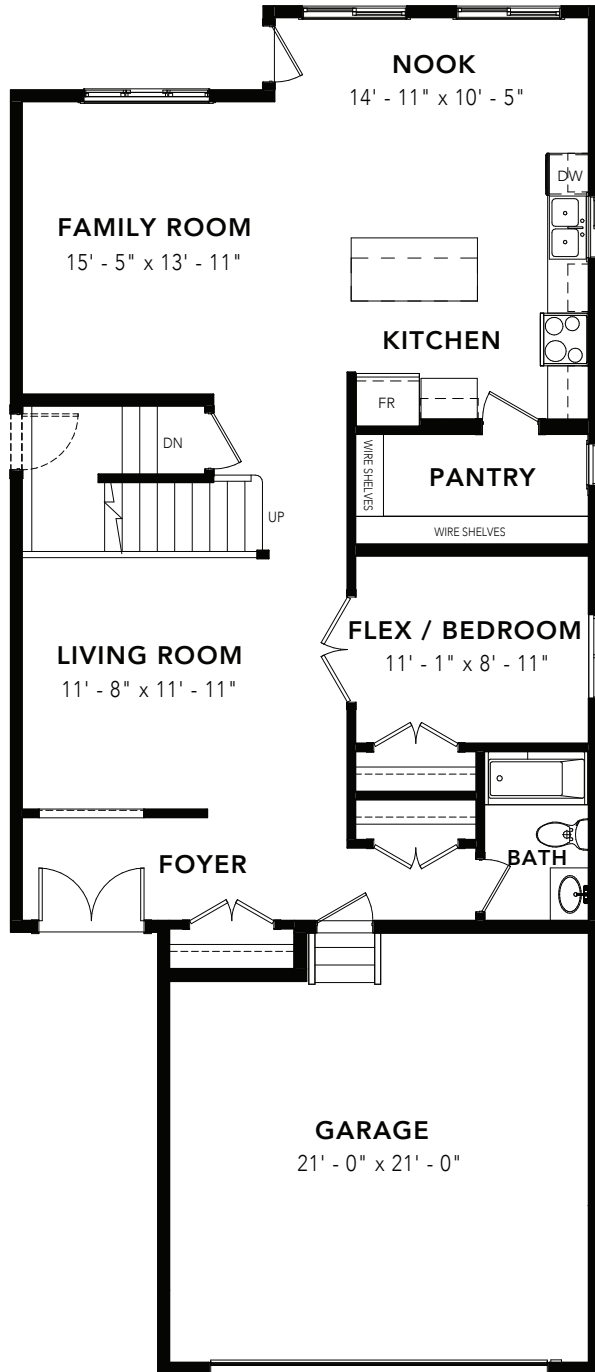


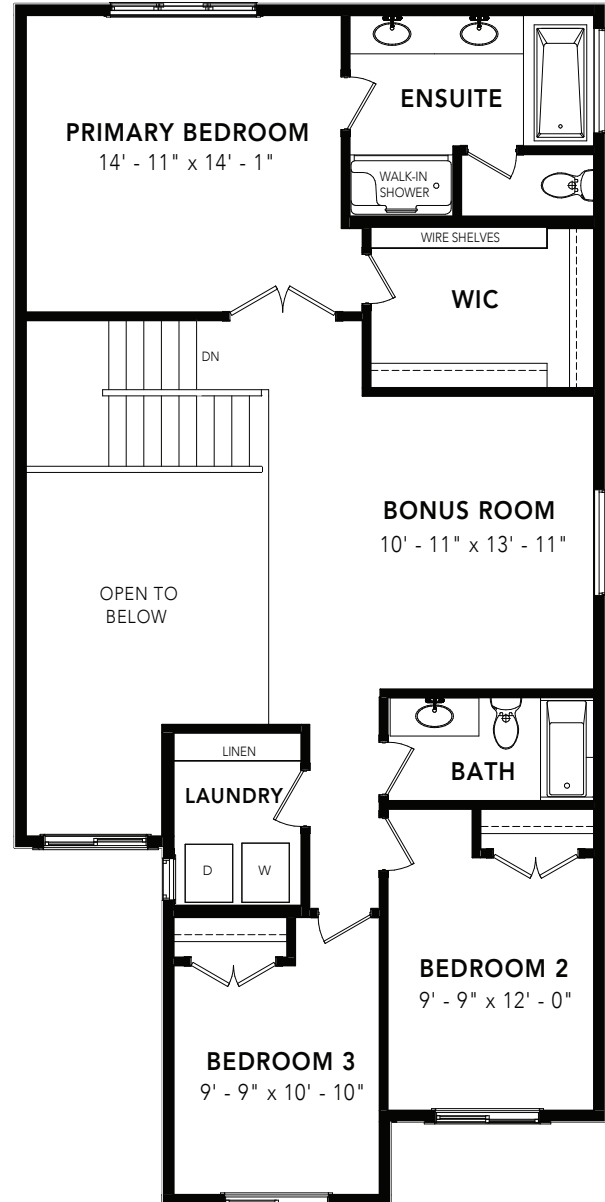
GOLD MAPLE



4 BEDS 3 BATHS 2467 - 2636 SQ FT 28' WIDE



MAIN FLOOR : 1200 SQ FT



SECOND FLOOR: 1267 SQ FT

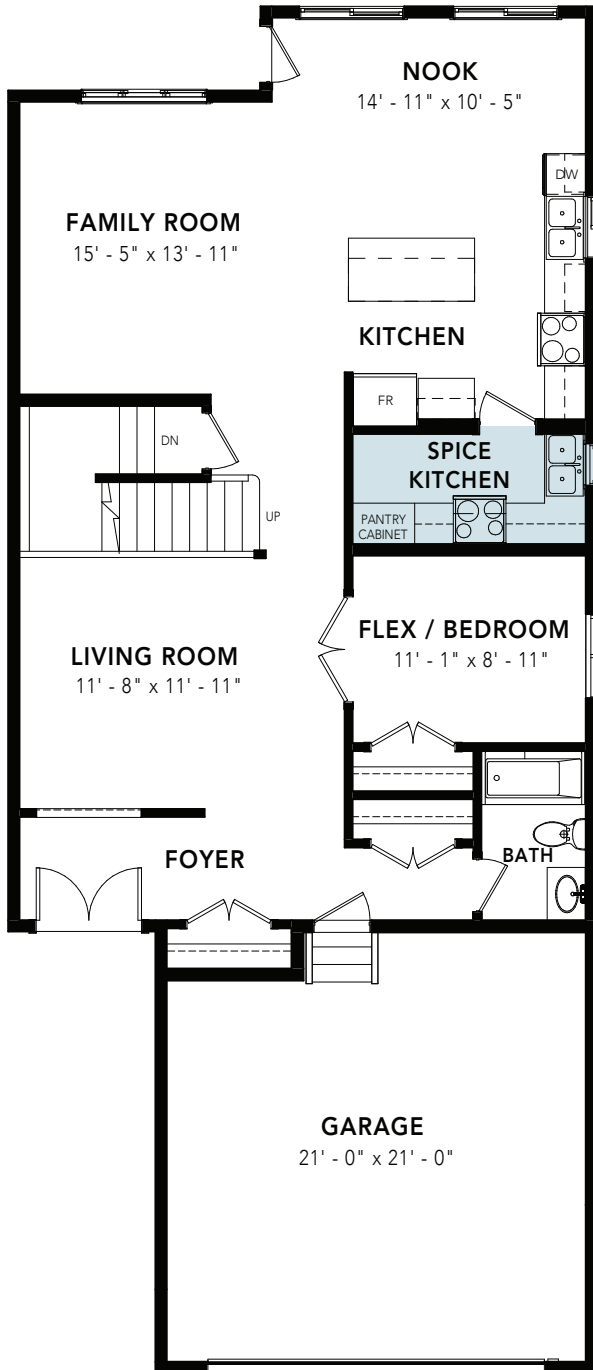


© 2024 Landmark Group of Companies Inc. All rights reserved. Any use or reproduction in whole or in part of these promotional materials without the prior written authorization of Landmark Group of Companies Inc. is strictly prohibited. Floor plans, specifications, pricing and dimensions shown are approximate and subject to change without notice. Artist rendering shown. Interior room dimensions are taken from inside of walls. Garage dimensions are taken from outside of walls. Revised on 01/16/2024.

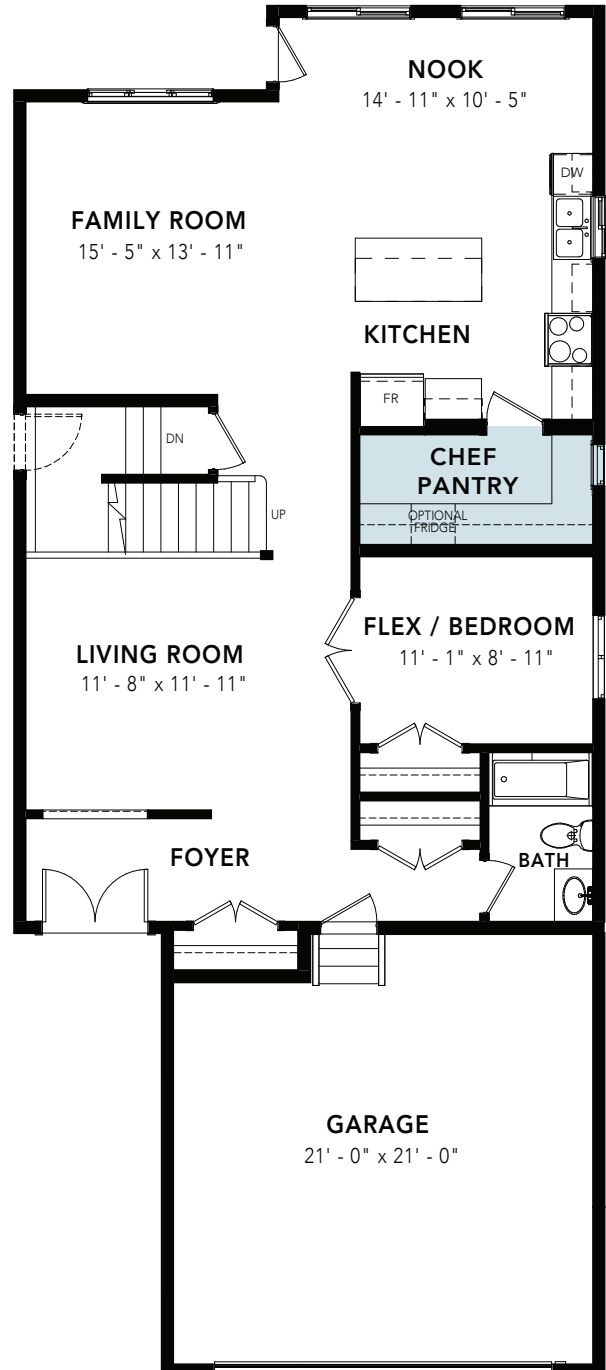
GOLD MAPLE

OPTIONS

4 BEDS 3 BATHS 2467 - 2636 SQ FT 28' WIDE



SPICE KITCHEN OPTION: 1200 SQ FT



CHEF PANTRY OPTION: 1200 SQ FT

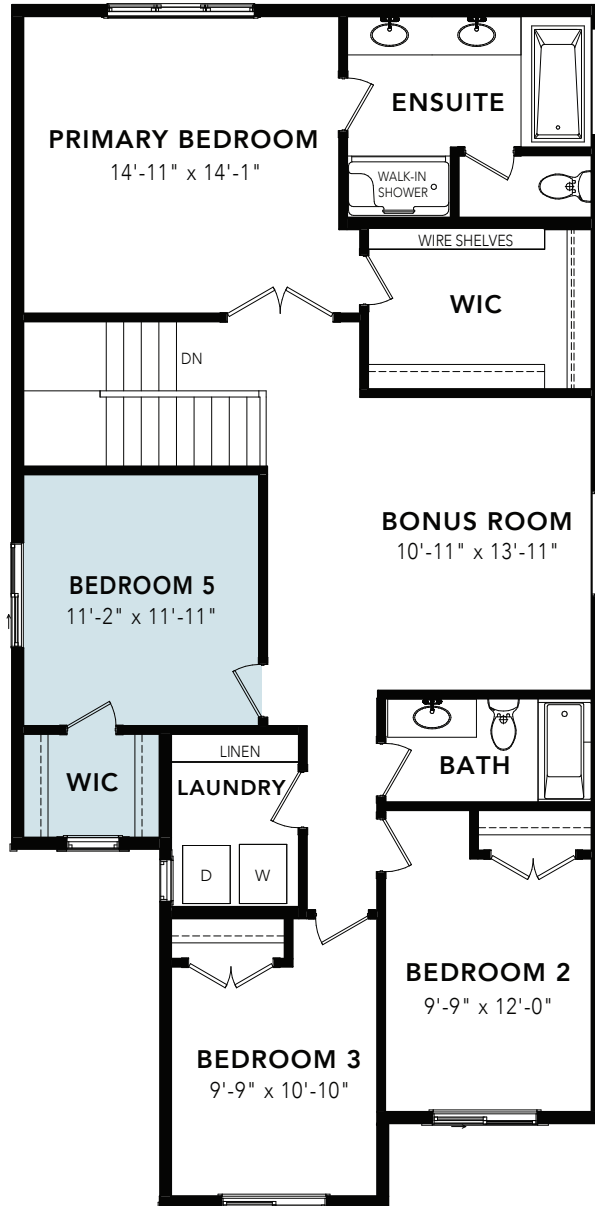


© 2024 Landmark Group of Companies Inc. All rights reserved. Any use or reproduction in whole or in part of these promotional materials without the prior written authorization of Landmark Group of Companies Inc. is strictly prohibited. Floor plans, specifications, pricing and dimensions shown are approximate and subject to change without notice. Artist rendering shown. Interior room dimensions are taken from inside of walls. Garage dimensions are taken from outside of walls. Revised on 01/16/2024.

GOLD MAPLE

OPTIONS

4 BEDS 3 BATHS 2467 - 2636 SQ FT 28' WIDE



5 BEDROOM OPTION: 1436 SQ FT

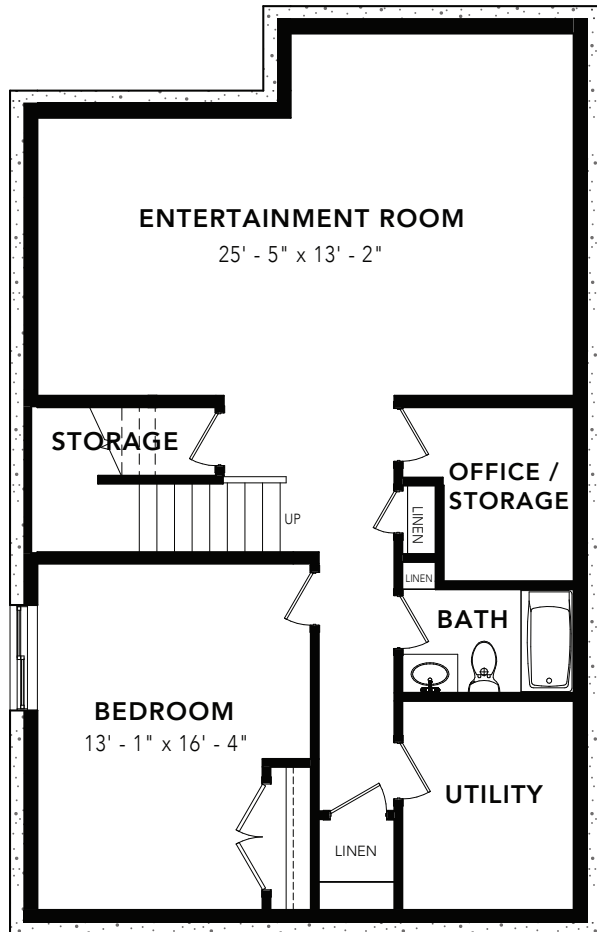


© 2024 Landmark Group of Companies Inc. All rights reserved. Any use or reproduction in whole or in part of these promotional materials without the prior written authorization of Landmark Group of Companies Inc. is strictly prohibited. Floor plans, specifications, pricing and dimensions shown are approximate and subject to change without notice. Artist rendering shown. Interior room dimensions are taken from inside of walls. Garage dimensions are taken from outside of walls. Revised on 01/16/2024.

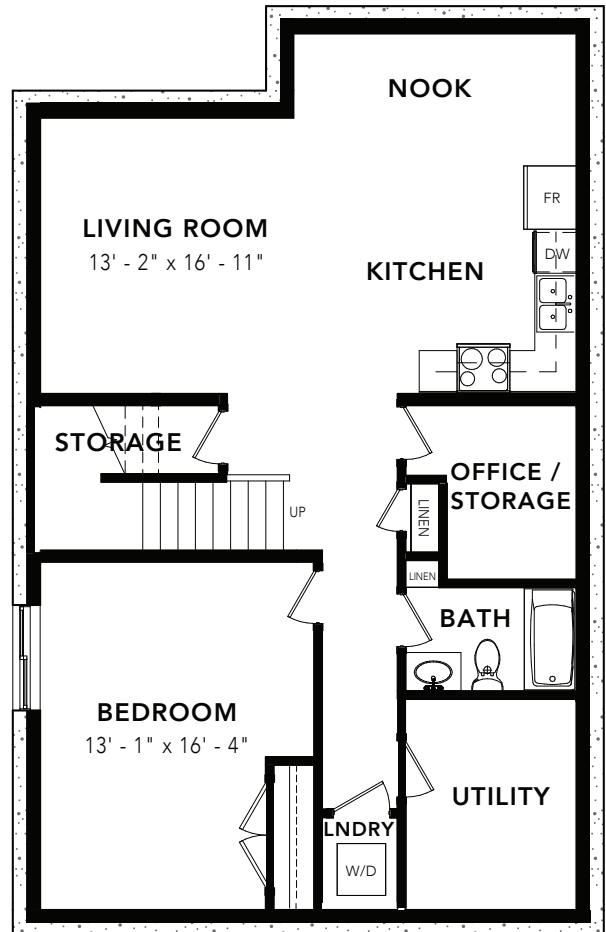
GOLD MAPLE

OPTIONS

4 BEDS 3 BATHS 2467 - 2636 SQ FT 28' WIDE



BASEMENT DEVELOPMENT OPTION: 885 SQ FT



BASEMENT SUITE OPTION: 885 SQ FT