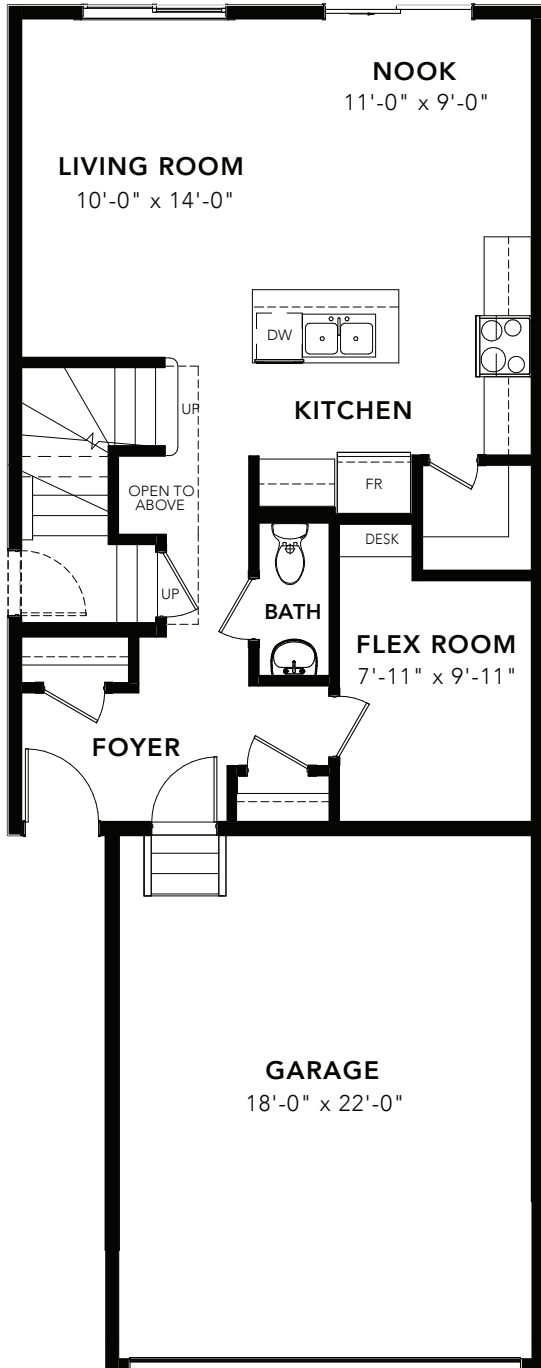


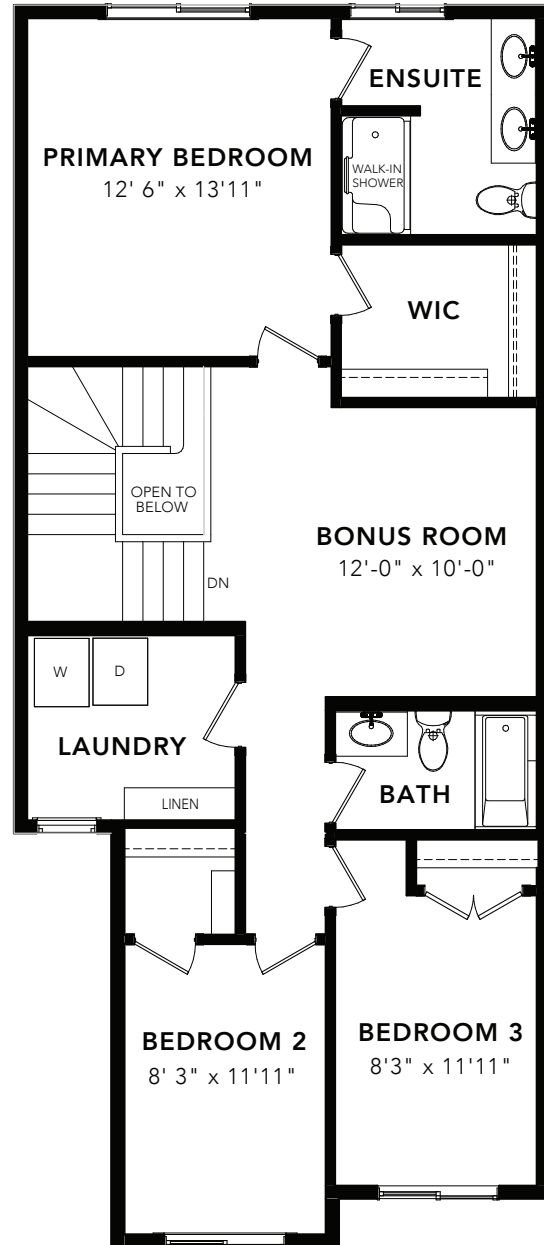
LOGGEPOLE PINE



3 BEDS 2.5 BATHS 1773 SQ FT 22' WIDE



MAIN FLOOR : 748 SQ FT



SECOND FLOOR: 1025 SQ FT

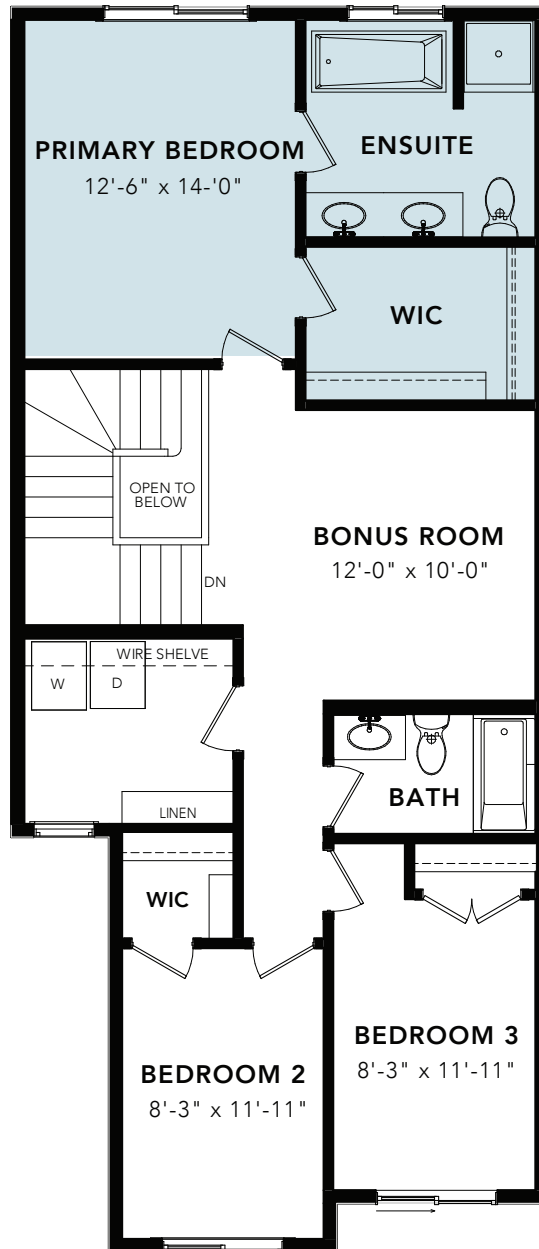


© 2024 Landmark Group of Companies Inc. All rights reserved. Any use or reproduction in whole or in part of these promotional materials without the prior written authorization of Landmark Group of Companies Inc. is strictly prohibited. Floor plans, specifications, pricing and dimensions shown are approximate and subject to change without notice. Artist rendering shown. Interior room dimensions are taken from inside of walls. Garage dimensions are taken from outside of walls. Revised on 01/16/2024.

LOGGEPOLE PINE

OPTIONS

3 BEDS 2.5 BATHS 1773 SQ FT 22' WIDE



4 PIECE ENSUITE OPTION: 1025 SQ FT

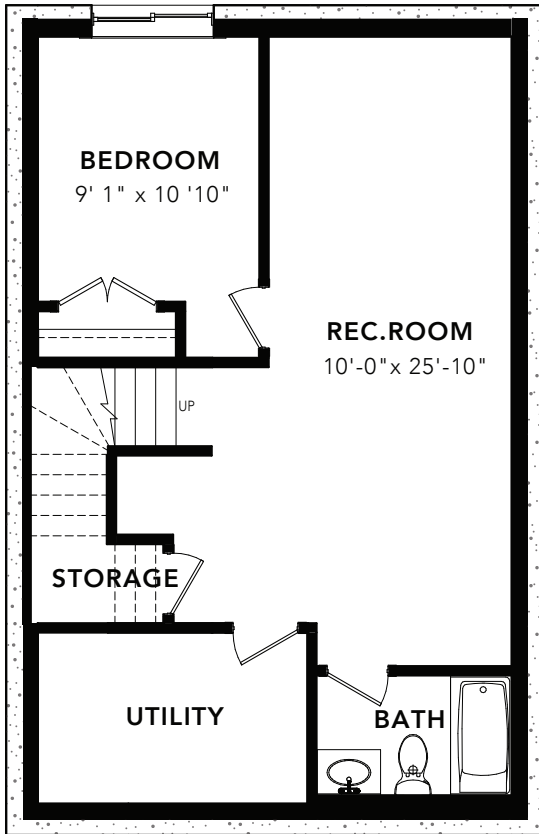


© 2024 Landmark Group of Companies Inc. All rights reserved. Any use or reproduction in whole or in part of these promotional materials without the prior written authorization of Landmark Group of Companies Inc. is strictly prohibited. Floor plans, specifications, pricing and dimensions shown are approximate and subject to change without notice. Artist rendering shown. Interior room dimensions are taken from inside of walls. Garage dimensions are taken from outside of walls. Revised on 01/16/2024.

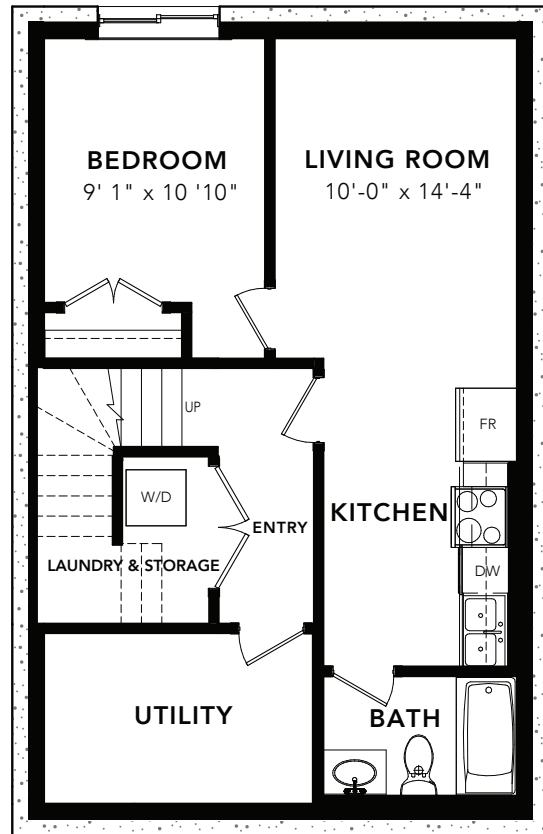
LOGGEPOLE PINE

OPTIONS

3 BEDS 2.5 BATHS 1773 SQ FT



BASEMENT DEVELOPMENT
OPTION: 585 SQ FT



BASEMENT SUITE OPTION: 585 SQ FT