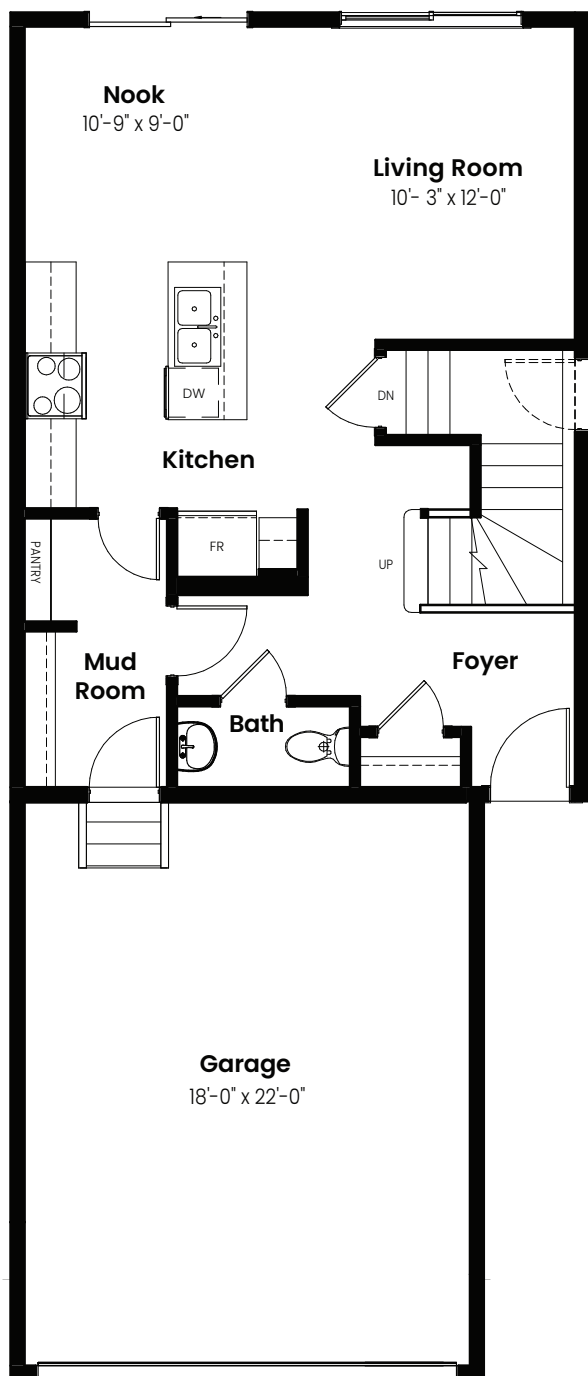


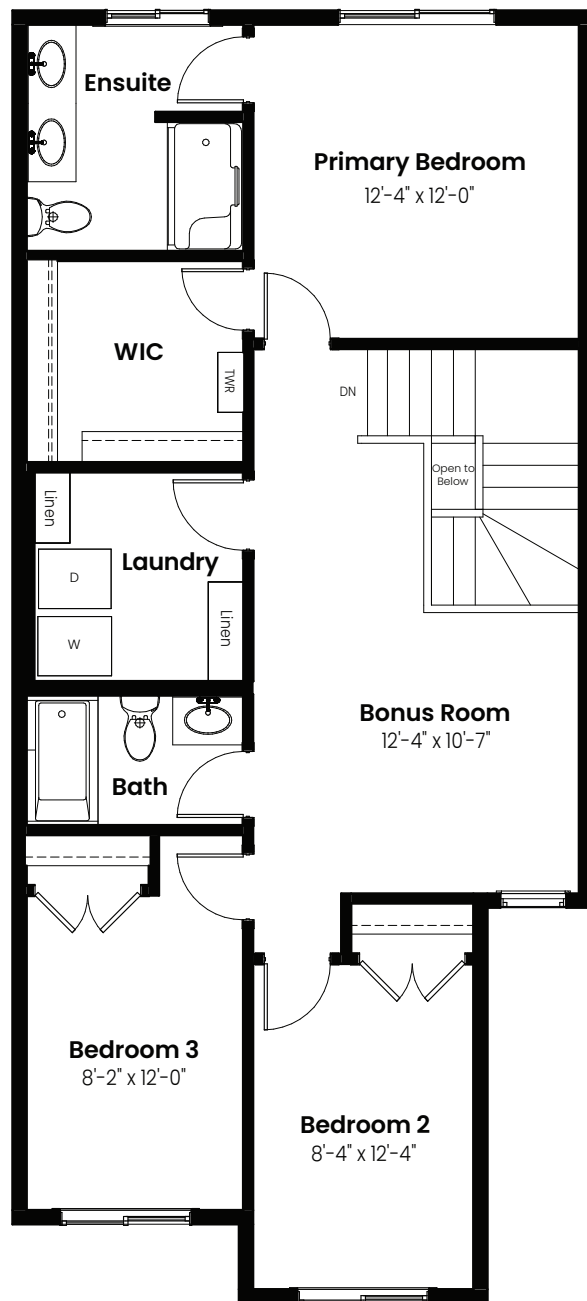
3 Bedrooms | 2.5 Bathrooms

Louvre

1,639 sqft
22' Wide



Main Floor: 660 Sq Ft



Second Floor: 979 Sq Ft

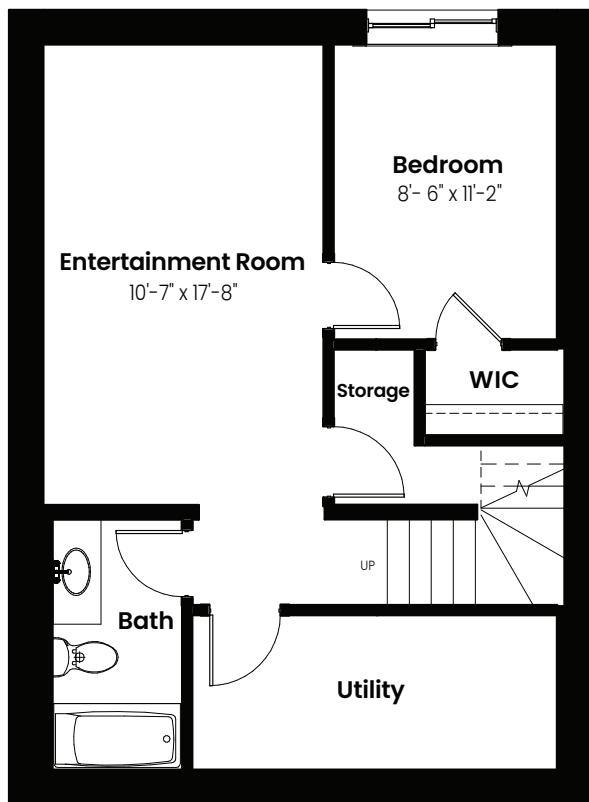


© 2024 Landmark Group of Companies Inc. All rights reserved. Any use or reproduction in whole or in part of these promotional materials without the prior written authorization of Landmark Group of Companies Inc. is strictly prohibited. Floor plans, specifications, pricing and dimensions shown are approximate and subject to change without notice. Artist rendering shown. Interior room dimensions are taken from inside of walls. Garage dimensions are taken from outside of walls. Revised on 09/03/2024.

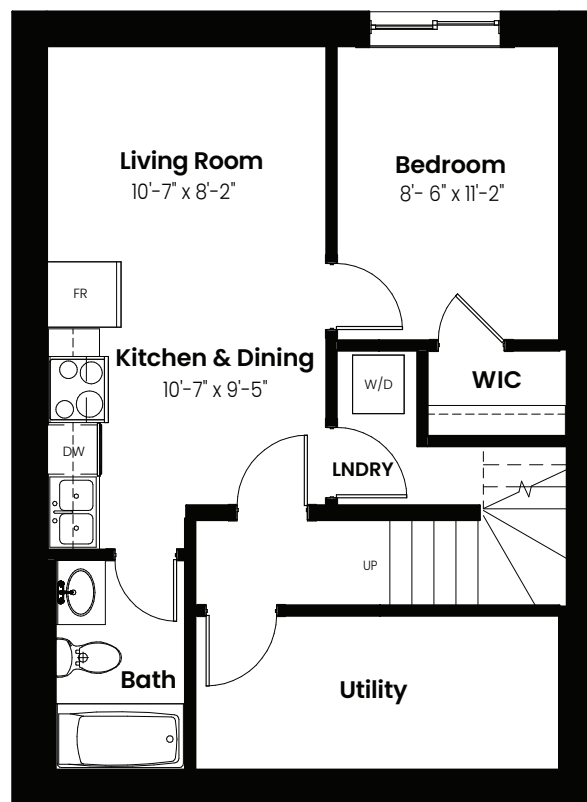
3 Beds | 2.5 Baths | 1,639 Sq. Ft. | 22' Wide

Louvre

Basement Options



Basement Development
Option: 463 Sq Ft



Basement Suite Option: 463 Sq Ft



© 2024 Landmark Group of Companies Inc. All rights reserved. Any use or reproduction in whole or in part of these promotional materials without the prior written authorization of Landmark Group of Companies Inc. is strictly prohibited. Floor plans, specifications, pricing and dimensions shown are approximate and subject to change without notice. Artist rendering shown. Interior room dimensions are taken from inside of walls. Garage dimensions are taken from outside of walls. Revised on 09/03/2024.

3 Beds | 2.5 Baths | 1,639 Sq. Ft. | 22' Wide

Louvre

Elevation



© 2024 Landmark Group of Companies Inc. All rights reserved. Any use or reproduction in whole or in part of these promotional materials without the prior written authorization of Landmark Group of Companies Inc. is strictly prohibited. Floor plans, specifications, pricing and dimensions shown are approximate and subject to change without notice. Artist rendering shown. Interior room dimensions are taken from inside of walls. Garage dimensions are taken from outside of walls. Revised on 09/03/2024.