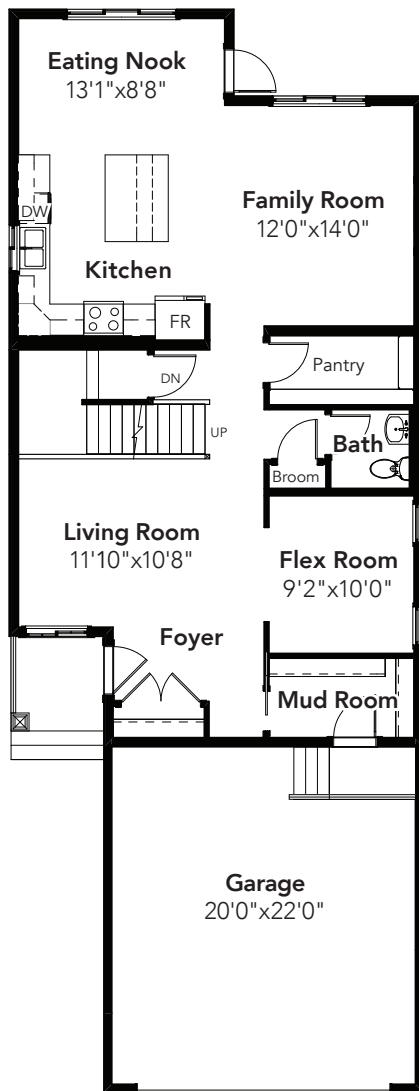


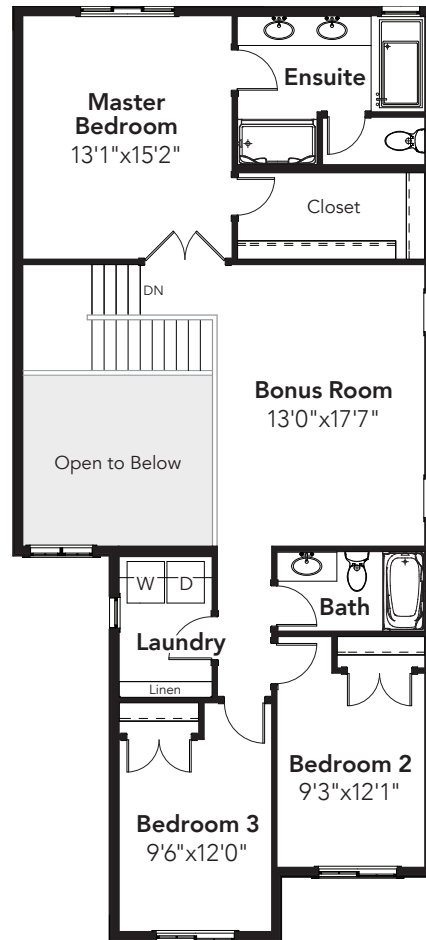
MONTRÉAL



3 BEDS
2.5 BATHS
2293 SQ FT
26' WIDE



MAIN: 1095 SQ FT



SECOND: 1198 SQ FT

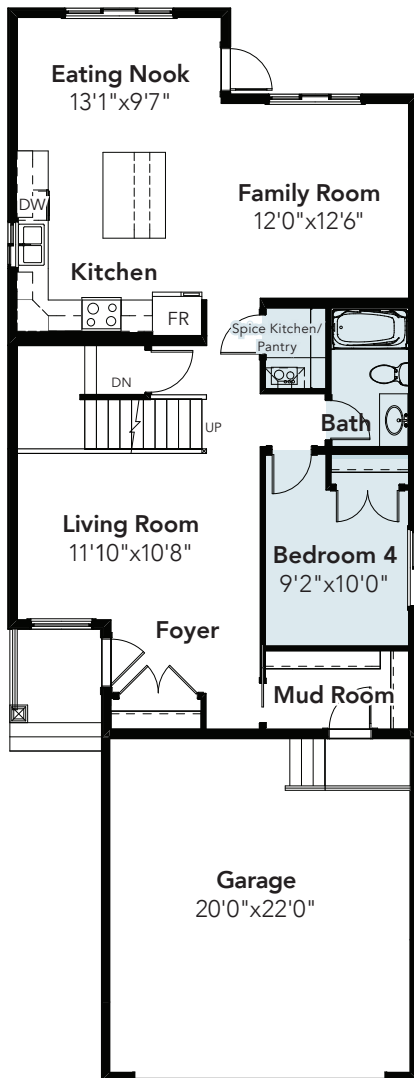


© 2017 Landmark Group of Companies Inc. All rights reserved. Any use or reproduction in whole or in part of these promotional materials without the prior written authorization of Landmark Group of Companies Inc. is strictly prohibited. Floor plans, specifications, pricing and dimensions shown are approximate and subject to change without notice. Artist rendering shown. Interior room dimensions are taken from inside of walls. Garage dimensions are taken from outside of walls. Revised 09/27/17.

MONTRÉAL

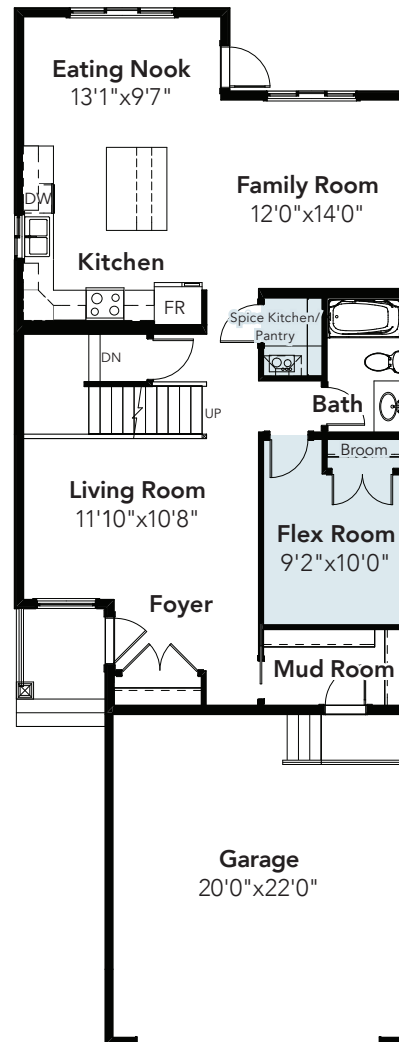
OPTIONS

MAIN FLOOR BEDROOM WITH SPICE KITCHEN AND PANTRY OPTION



MAIN: 1095 SQ FT

SPICE KITCHEN AND PANTRY OPTION

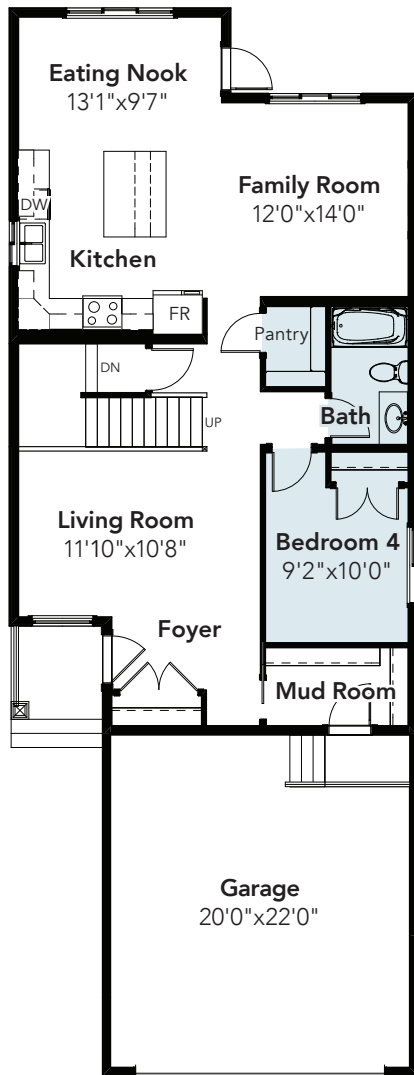


MAIN: 1095 SQ FT

MONTRÉAL

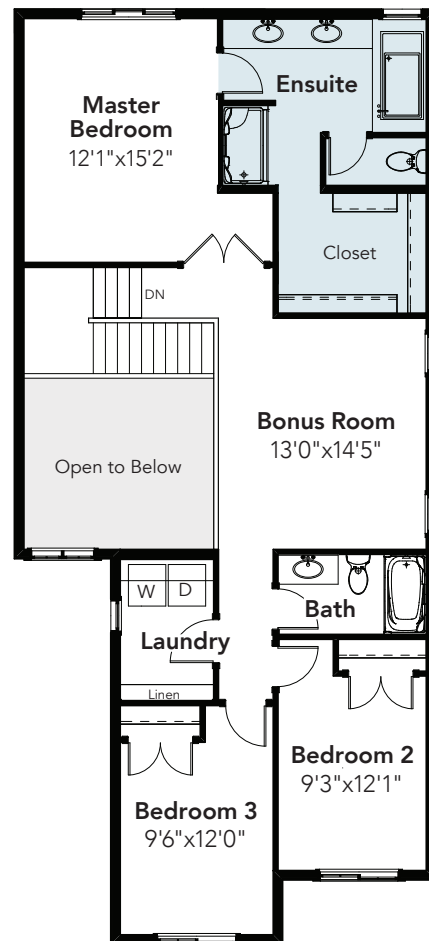
OPTIONS

MAIN FLOOR BEDROOM OPTION



MAIN: 1095 SQ FT

ENSUITE OPTION



SECOND: 1198 SQ FT

MONTRÉAL

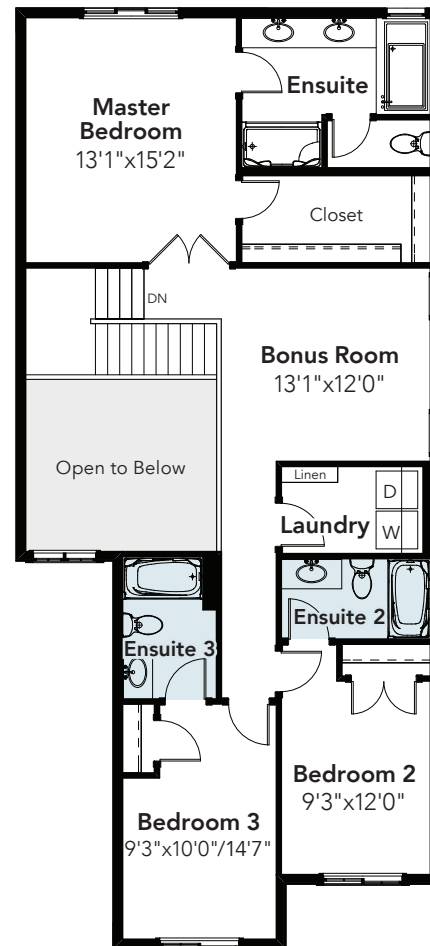
OPTIONS

SECOND FLOOR FLEX ROOM OPTION



SECOND: 1198 SQ FT

SECONDARY BEDROOM ENSUITES OPTION



SECOND: 1198 SQ FT