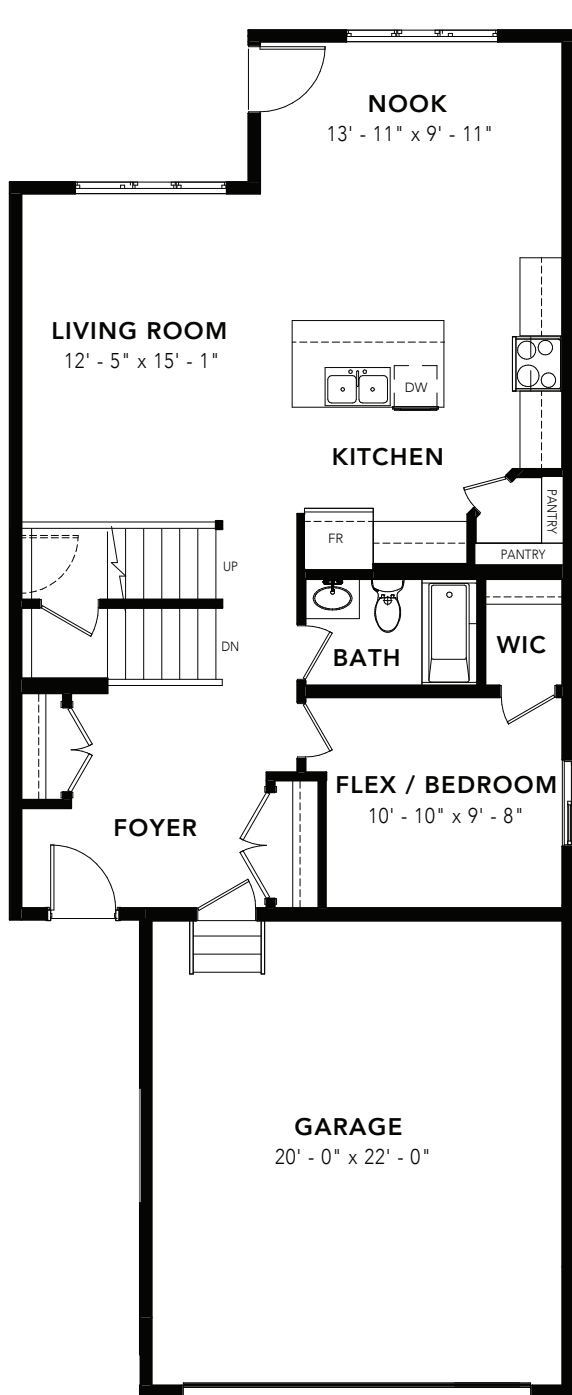
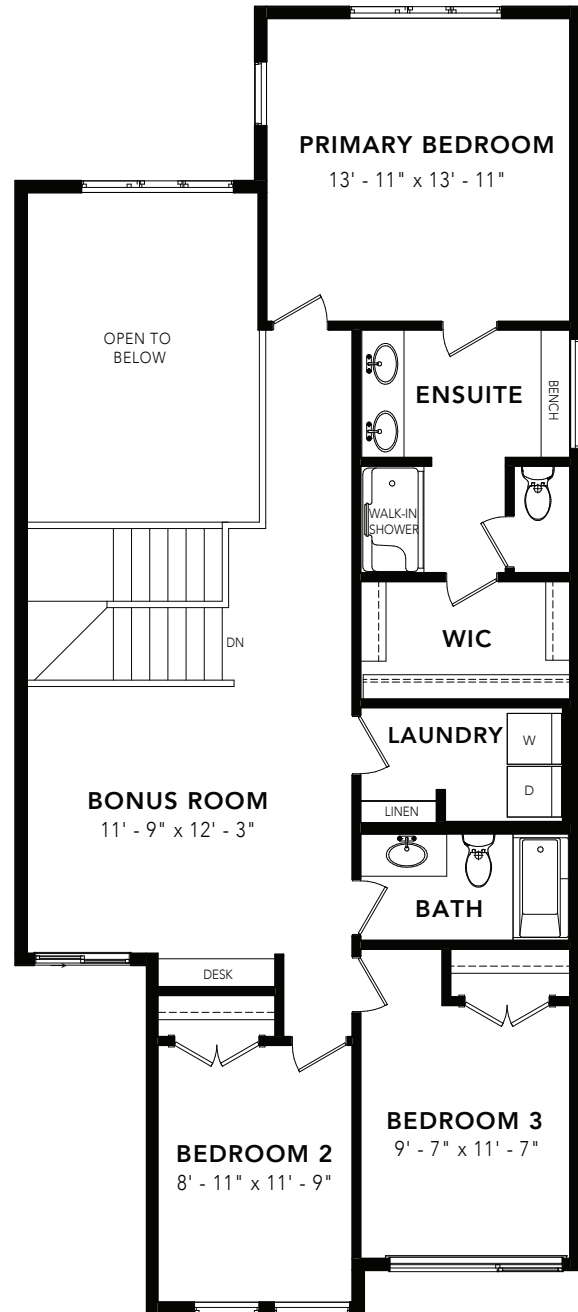


# MOUNTAIN ASH

4 BEDS 2.5 BATHS 2185 SQ FT 26' WIDE



MAIN FLOOR : 989 SQ FT



SECOND FLOOR: 1196 SQ FT

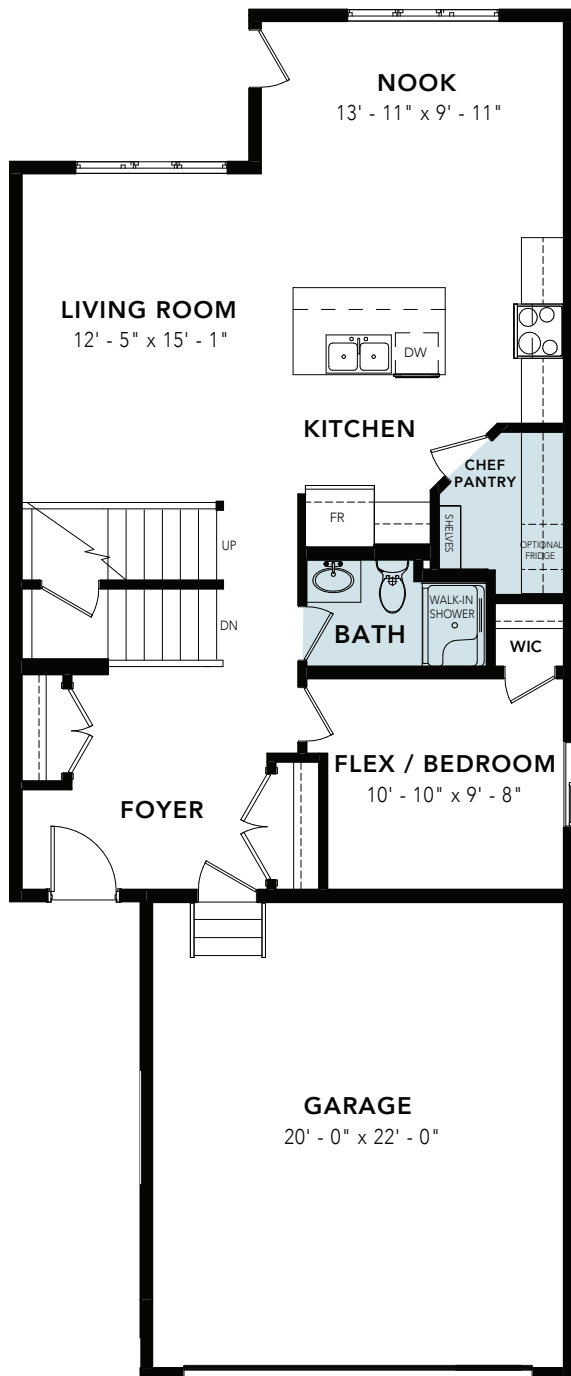


© 2023 Landmark Group of Companies Inc. All rights reserved. Any use or reproduction in whole or in part of these promotional materials without the prior written authorization of Landmark Group of Companies Inc. is strictly prohibited. Floor plans, specifications, pricing and dimensions shown are approximate and subject to change without notice. Artist rendering shown. Interior room dimensions are taken from inside of walls. Garage dimensions are taken from outside of walls. Revised on 11/16/2023.

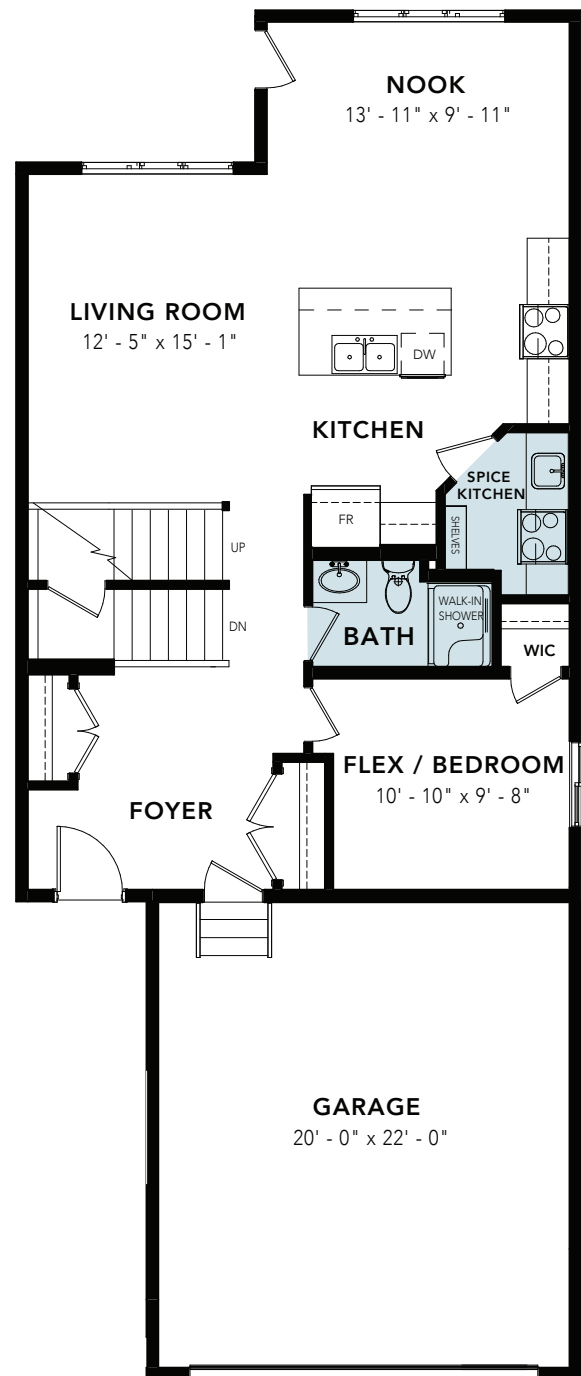
# MOUNTAIN ASH

OPTIONS

4 BEDS 2.5 BATHS 2185 SQ FT 26' WIDE



FULL BATH & CHEF  
PANTRY OPTION: 989 SQ FT



FULL BATH & SPICE  
KITCHEN OPTION: 989 SQ FT

## OPTIONS

**NOOK**  
13' - 11" x 9' - 11"

**LIVING ROOM**  
12' - 5" x 15' - 1"

**KITCHEN**

**PANTRY**  
SHELVES

**BATH**  
WALK-IN SHOWER  
WIC

**FLEX / BEDROOM**  
10' - 10" x 9' - 8"

**FOYER**

**GARAGE**  
20' - 0" x 22' - 0"

UP  
DN

FR  
DW

SHELVES

**SECOND FLOOR**

**PRIMARY BEDROOM**  
13' - 11" x 13' - 11"

**BONUS ROOM**  
11' - 9" x 12' - 3"

**BEDROOM 2**  
8' - 11" x 11' - 9"

**BEDROOM 3**  
9' - 7" x 11' - 7"

**ENSUITE**

**WIC**

**LAUNDRY**

**BATH**

**OPEN TO BELOW**

**DN**

**DESK**

**WALK-IN SHOWER**

**W**

**D**

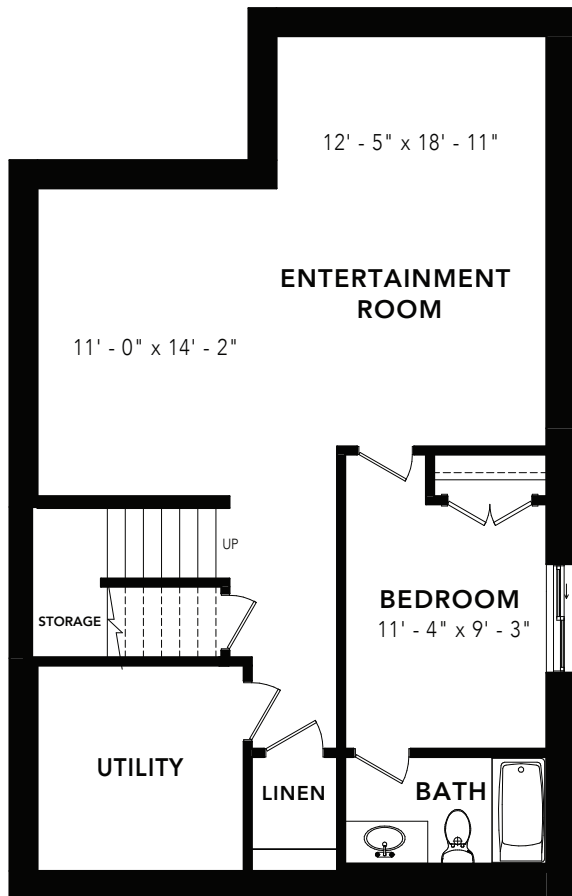
**LINEN**

© 2023 Landmark Group of Companies Inc. All rights reserved. Any use or reproduction in whole or in part of these promotional materials without the prior written authorization of Landmark Group of Companies Inc. is strictly prohibited. Floor plans, specifications, pricing and dimensions shown are approximate and subject to change without notice. Artist rendering shown. Interior room dimensions are taken from inside of walls. Garage dimensions are taken from outside of walls. Revised on 11/16/2023.

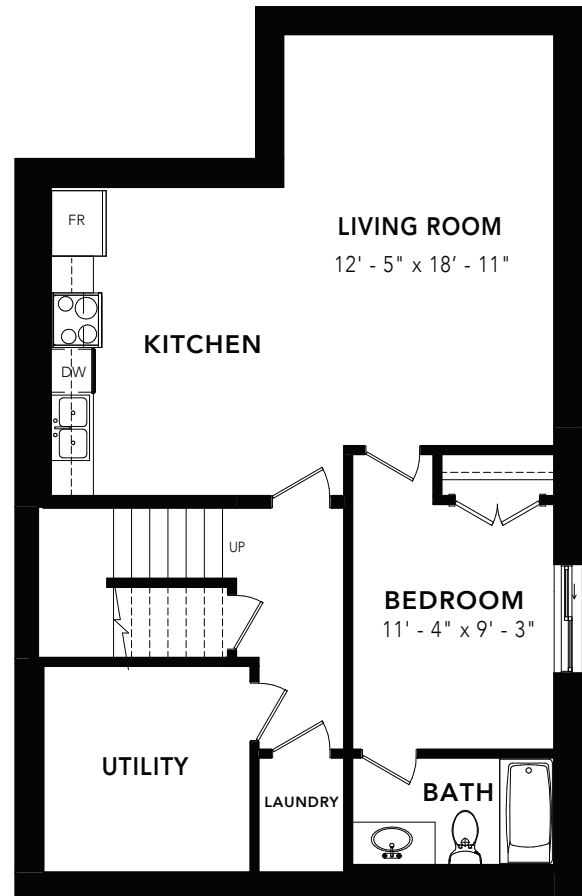
# MOUNTAIN ASH

OPTIONS

4 BEDS 2.5 BATHS 2185 SQ FT 26' WIDE



BASEMENT DEVELOPMENT OPTION : 730 SQ FT



BASEMENT SUITE OPTION: 730 SQ FT