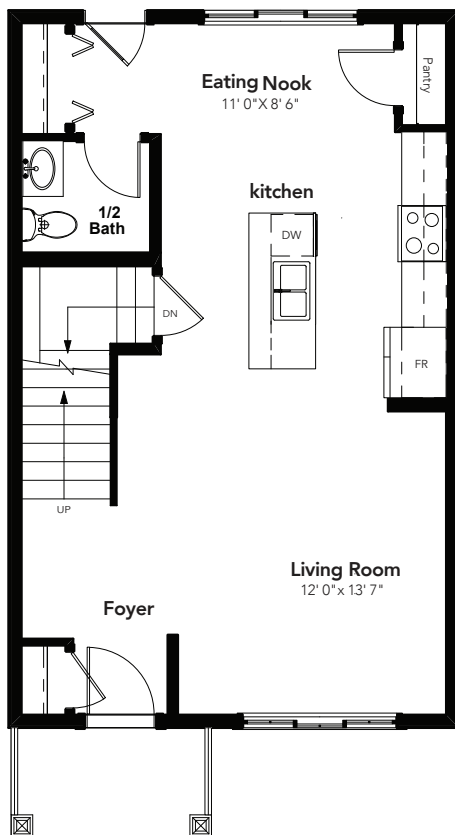
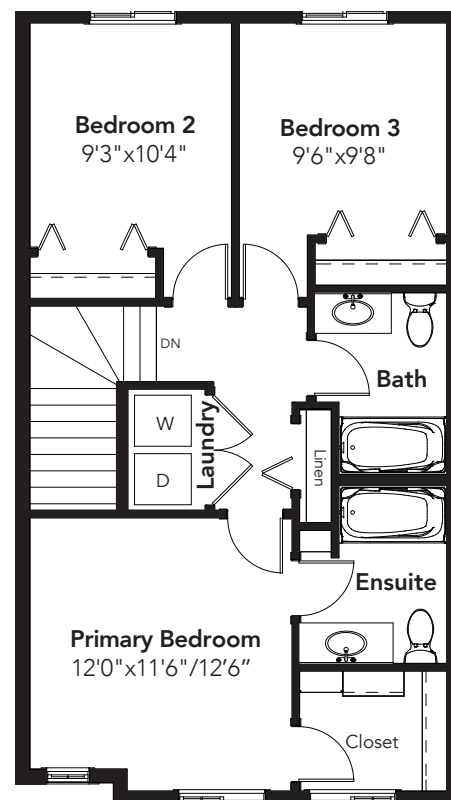


# NIAGARA

3 BEDS  
2.5 BATHS  
1356 SQ FT  
20' WIDE



MAIN: 640 SQ FT



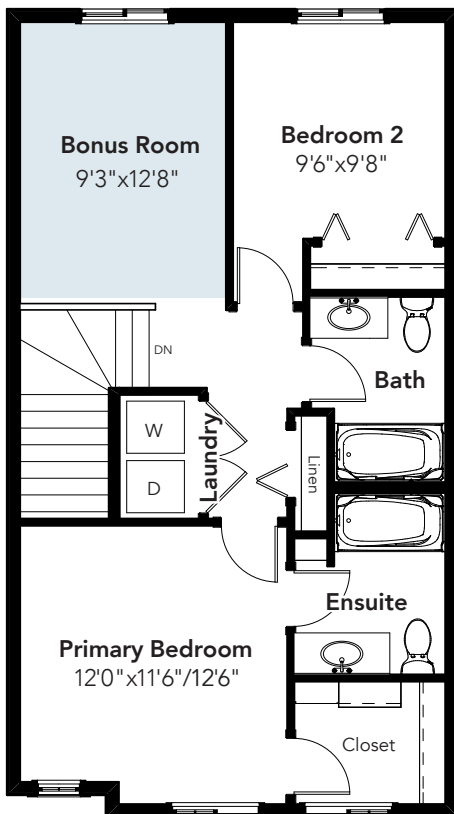
SECOND: 716 SQ FT



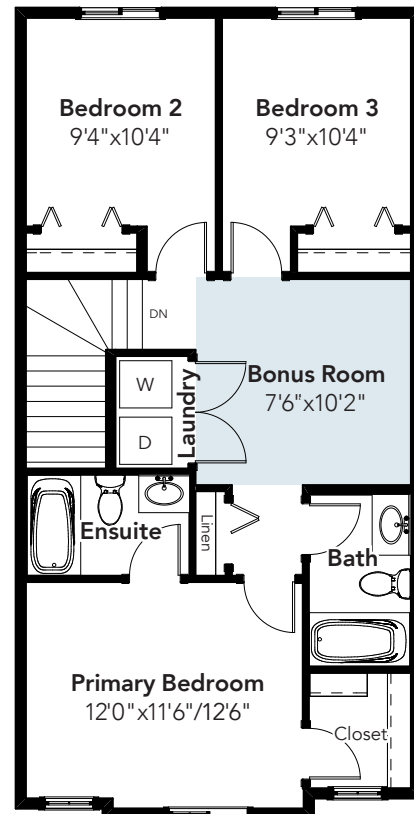
© 2021 Landmark Group of Companies Inc. All rights reserved. Any use or reproduction in whole or in part of these promotional materials without the prior written authorization of Landmark Group of Companies Inc. is strictly prohibited. Floor plans, specifications, pricing and dimensions shown are approximate and subject to change without notice. Artist rendering shown. Interior room dimensions are taken from inside of walls. Garage dimensions are taken from outside of walls. Revised on 10/28/2021.

# NIAGARA

OPTIONS



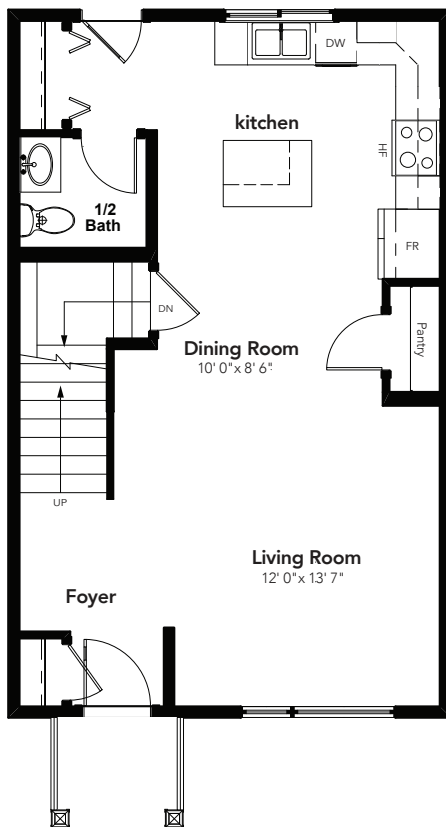
2 BED + BONUS ROOM OPTION  
SECOND: 716 SQ FT



3 BED + BONUS ROOM OPTION  
SECOND: 793 SQ FT

# NIAGARA

OPTIONS



REAR KITCHEN OPTION  
MAIN: 640 SQ FT



© 2021 Landmark Group of Companies Inc. All rights reserved. Any use or reproduction in whole or in part of these promotional materials without the prior written authorization of Landmark Group of Companies Inc. is strictly prohibited. Floor plans, specifications, pricing and dimensions shown are approximate and subject to change without notice. Artist rendering shown. Interior room dimensions are taken from inside of walls. Garage dimensions are taken from outside of walls. Revised on 10/28/2021.