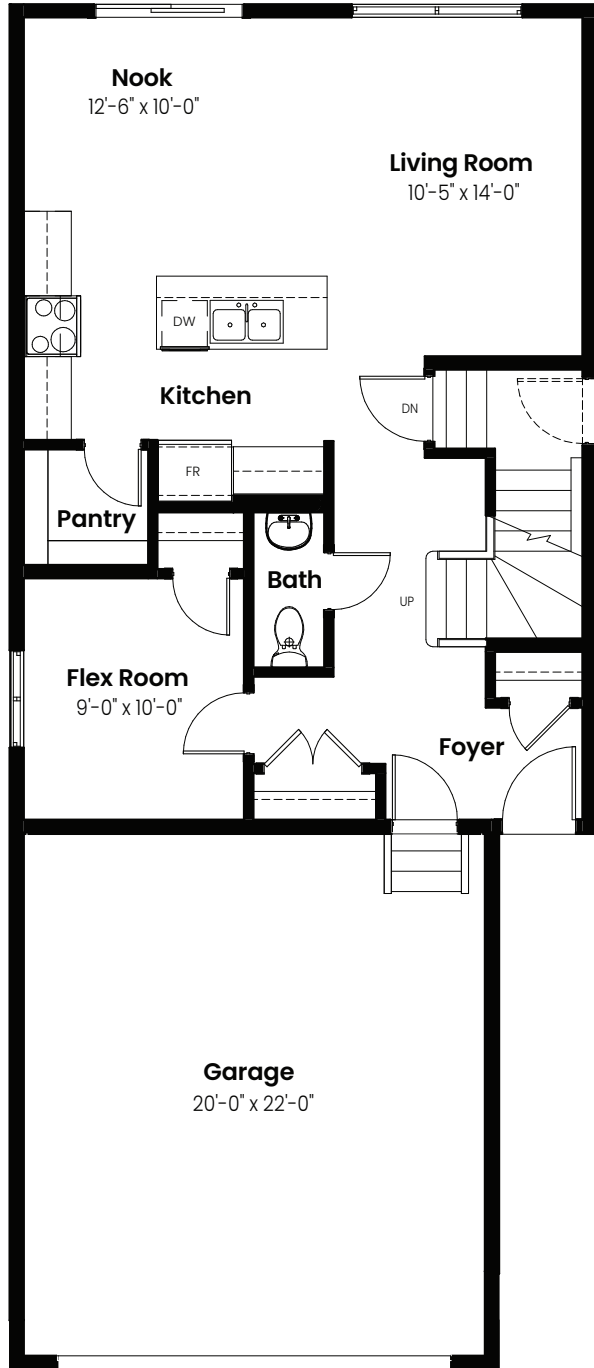


3 Bedrooms | 2.5 Bathrooms

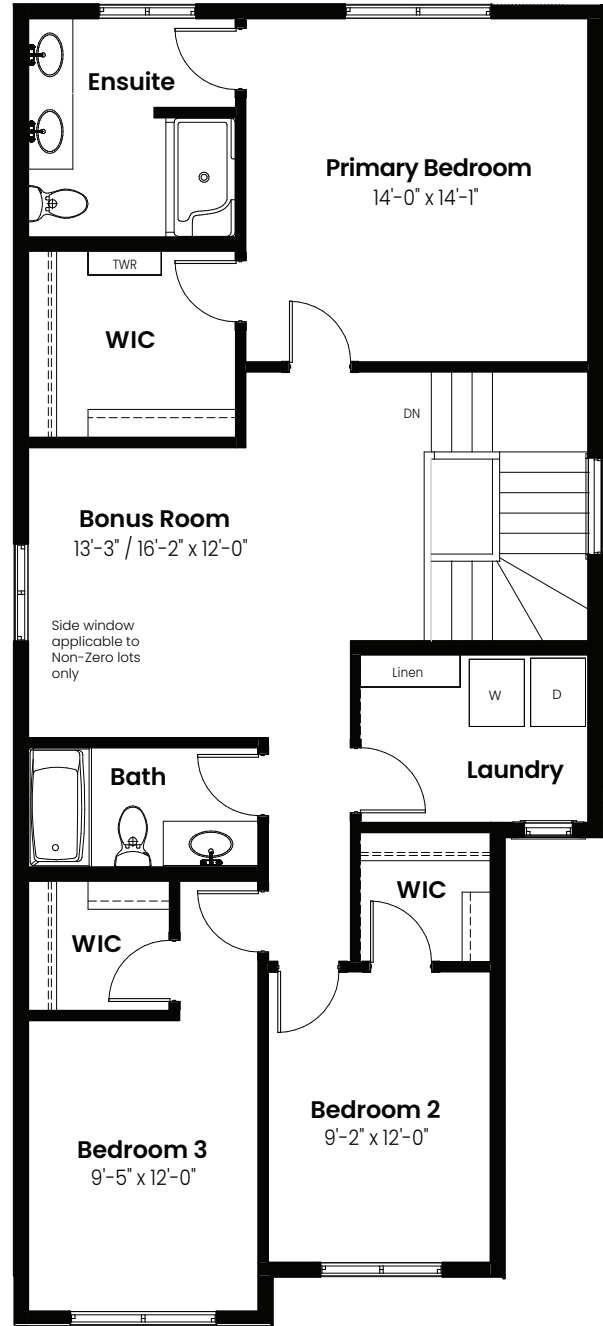
Nile

2,004 sqft

24' Wide



Main Floor: 816 Sq Ft



Second Floor: 1187 Sq Ft

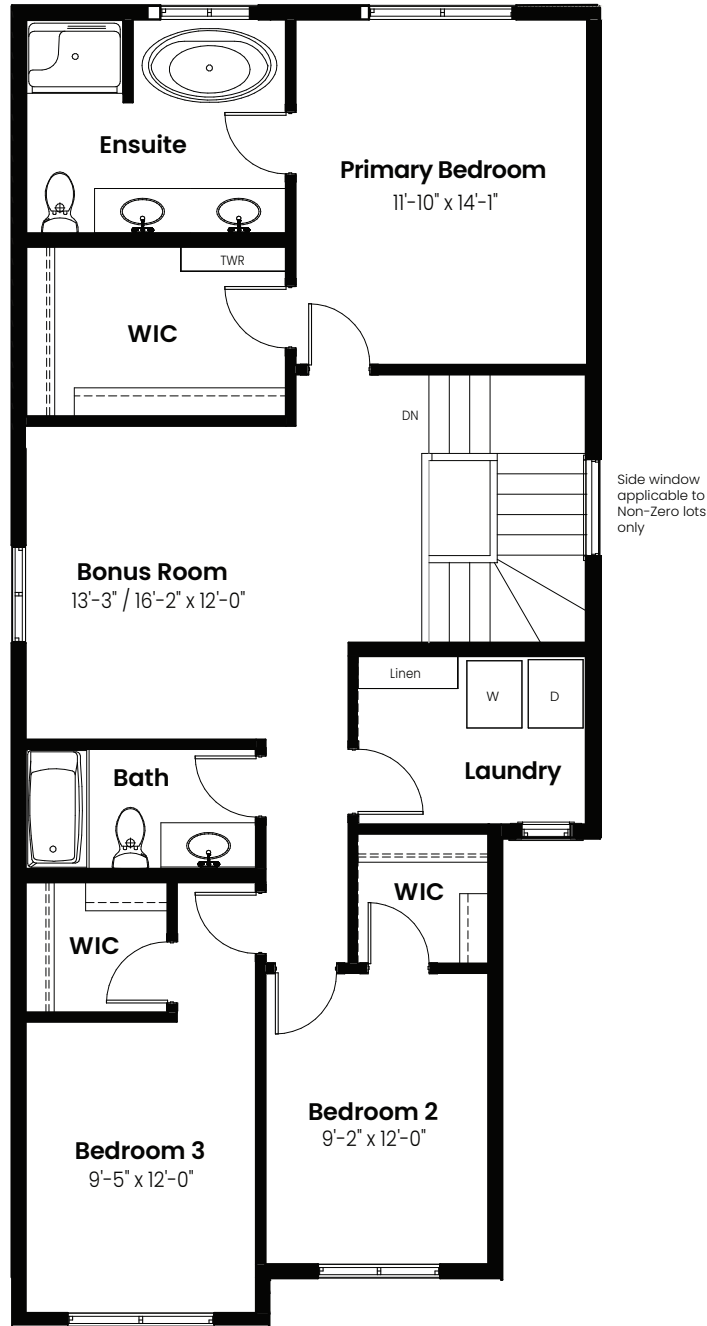


© 2025 Landmark Group of Companies Inc. All rights reserved. Any use or reproduction in whole or in part of these promotional materials without the prior written authorization of Landmark Group of Companies Inc. is strictly prohibited. Floor plans, specifications, pricing and dimensions shown are approximate and subject to change without notice. Artist rendering shown. Interior room dimensions are taken from inside of walls. Garage dimensions are taken from outside of walls. Revised on 01/17/2025.

3 Beds | 2.5 Baths | 2,004 Sq. Ft. | 24' Wide

Options

Nile



4 Piece Ensuite Option: 1187 Sq Ft

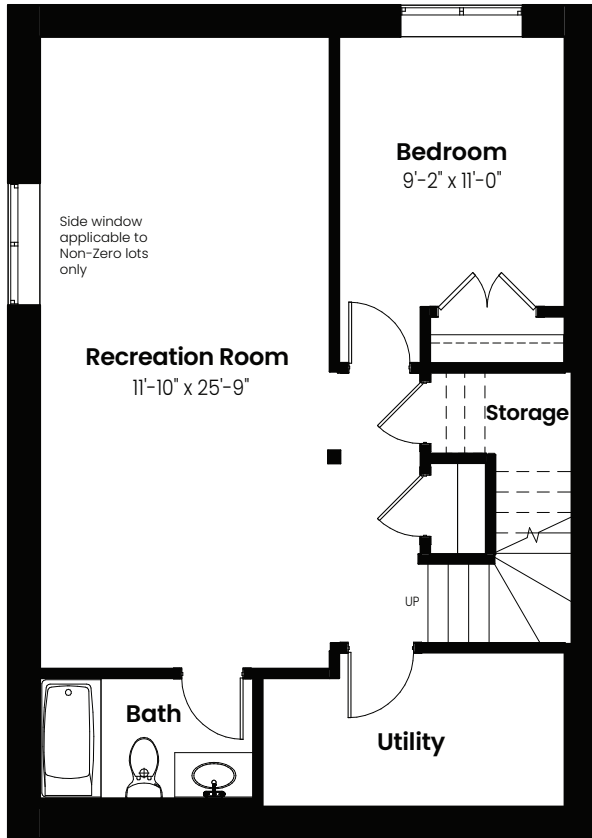


© 2025 Landmark Group of Companies Inc. All rights reserved. Any use or reproduction in whole or in part of these promotional materials without the prior written authorization of Landmark Group of Companies Inc. is strictly prohibited. Floor plans, specifications, pricing and dimensions shown are approximate and subject to change without notice. Artist rendering shown. Interior room dimensions are taken from inside of walls. Garage dimensions are taken from outside of walls. Revised on 01/17/2025.

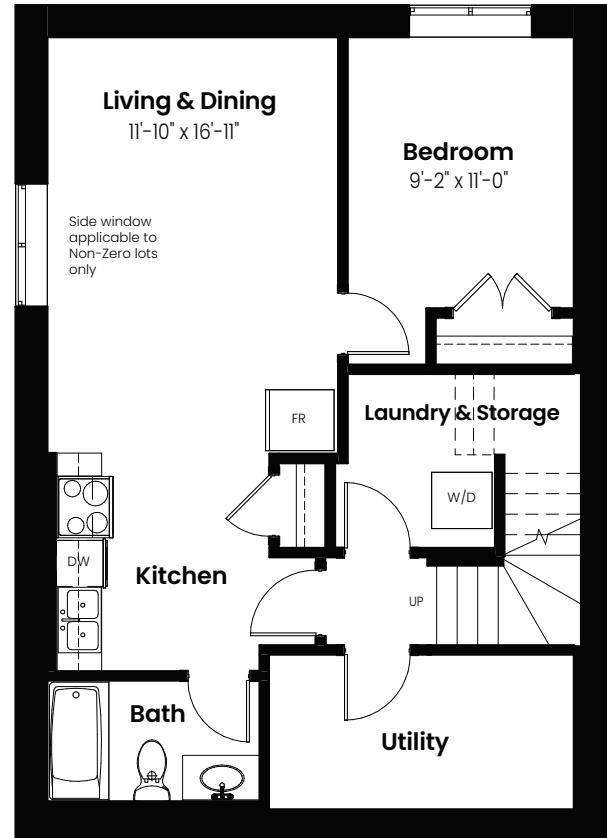
3 Beds | 2.5 Baths | 2,004 Sq. Ft. | 24' Wide

Nile

Basement Options



Basement Development
Option: 610 Sq Ft



Basement Suite Option: 610 Sq Ft



3 Beds | 2.5 Baths | 2,004 Sq. Ft. | 24' Wide

Nile

Elevation



© 2025 Landmark Group of Companies Inc. All rights reserved. Any use or reproduction in whole or in part of these promotional materials without the prior written authorization of Landmark Group of Companies Inc. is strictly prohibited. Floor plans, specifications, pricing and dimensions shown are approximate and subject to change without notice. Artist rendering shown. Interior room dimensions are taken from inside of walls. Garage dimensions are taken from outside of walls. Revised on 01/17/2025.