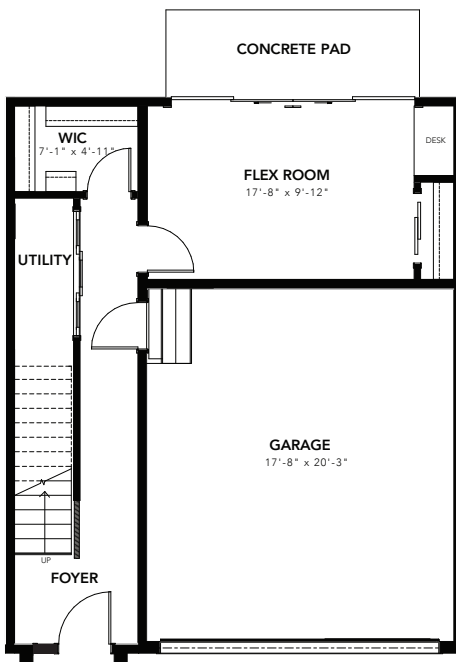




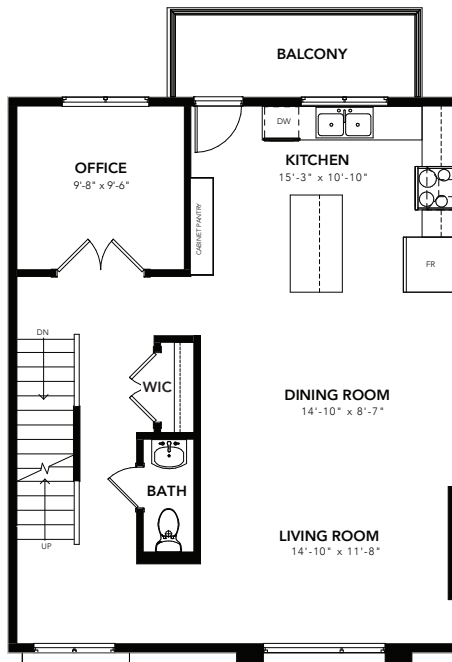
SYLVAN

END UNIT

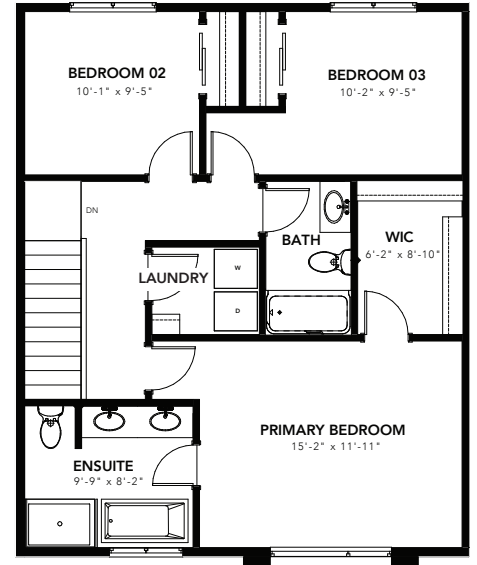
2,044 SQ FT 3 BED, 2.5 BATH, 26' WIDE



GROUND: 370 SQ FT



MAIN: 837 SQ FT



SECOND: 837 SQ FT

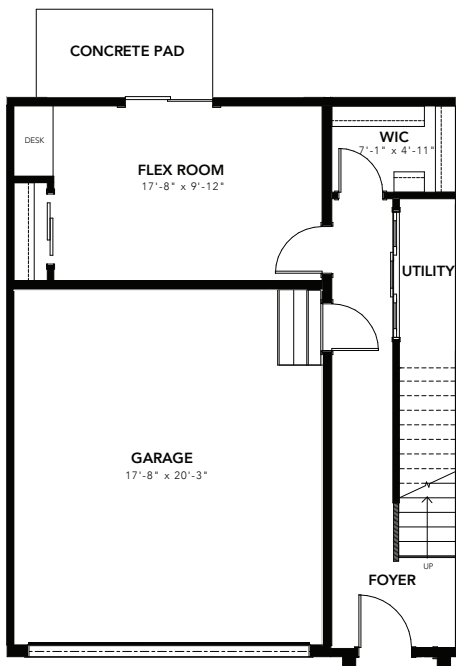
ekos POINT



SYLVAN

MIDDLE UNIT

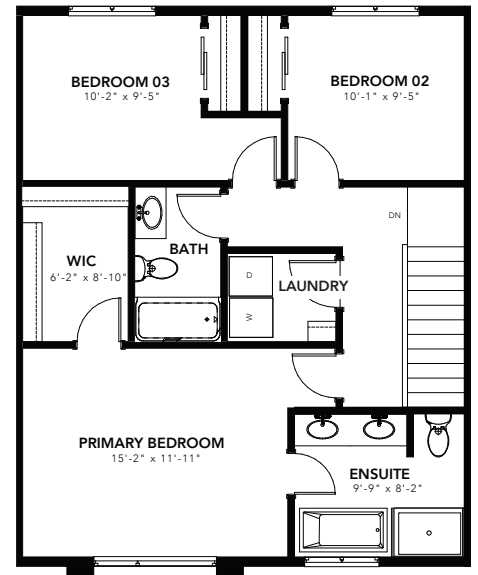
2,022 SQ FT 3 BED, 2.5 BATH, 26' WIDE



GROUND: 358 SQ FT



MAIN: 832 SQ FT

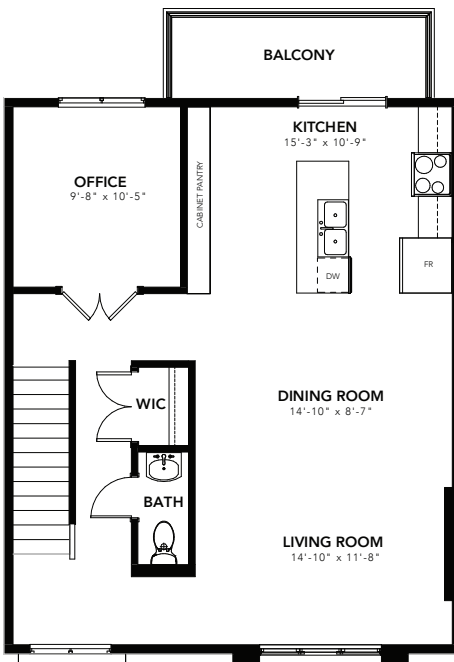


SECOND: 832 SQ FT

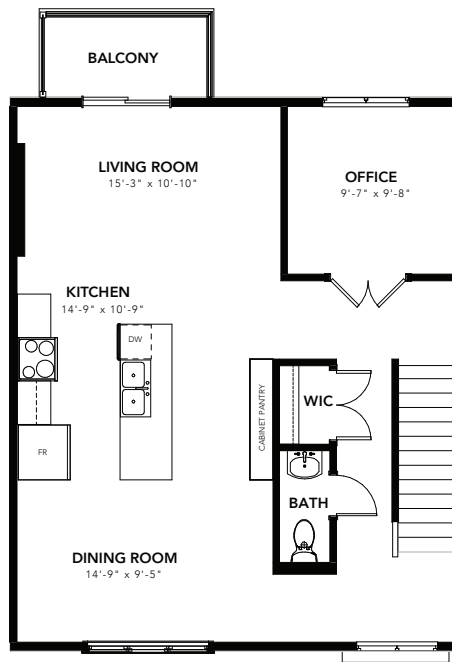
OPTIONS



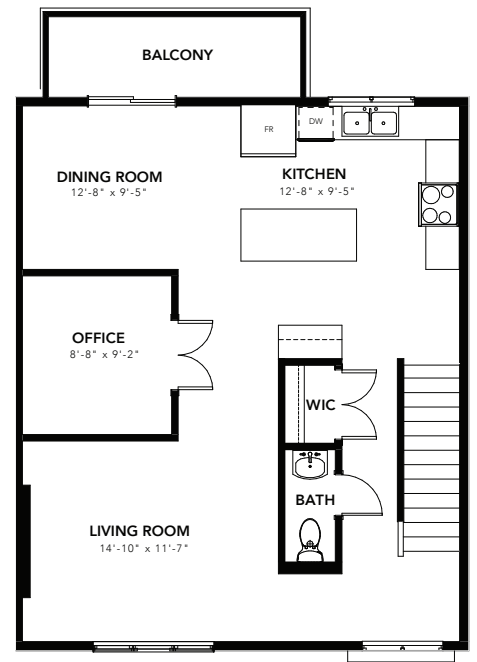
MAIN FLOOR OPTIONS



CABINET PANTRY OPTION



CENTER KITCHEN OPTION



CENTER OFFICE OPTION