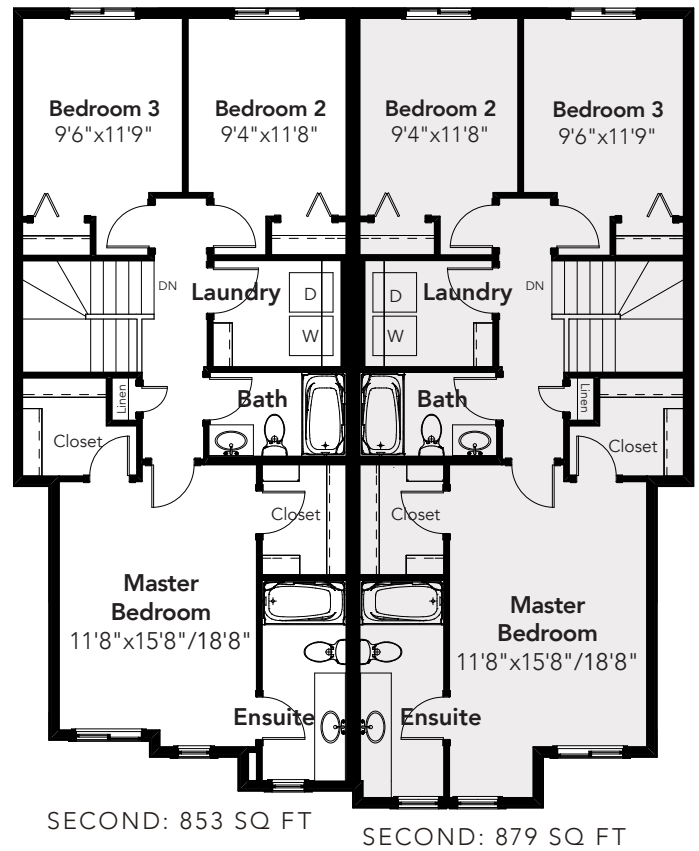
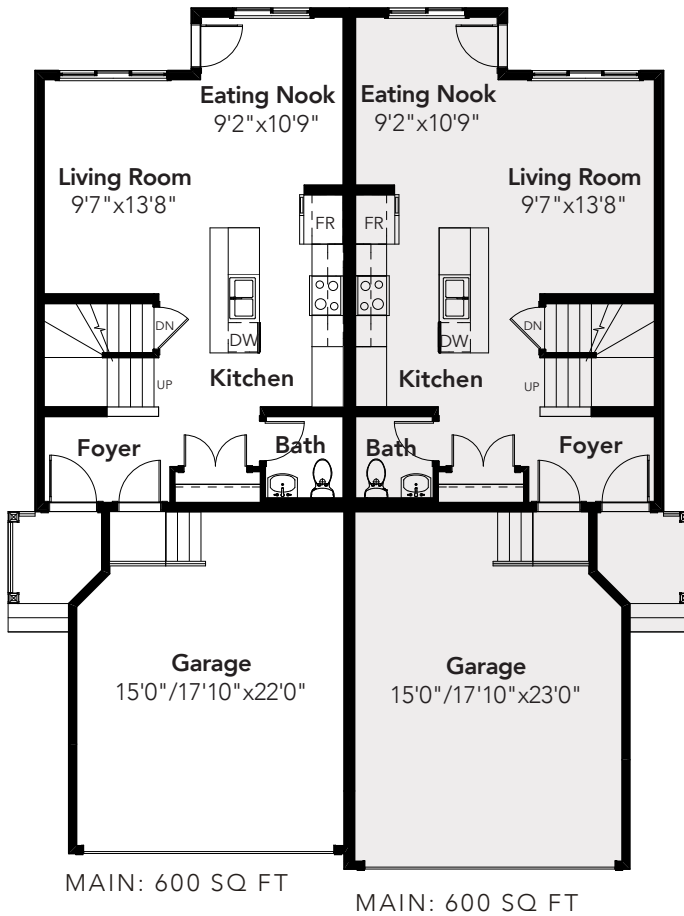


TOFINO



3 BEDS
 2.5 BATHS
 1453 SQ FT
 20' WIDE



LANDMARKHOMES.CA

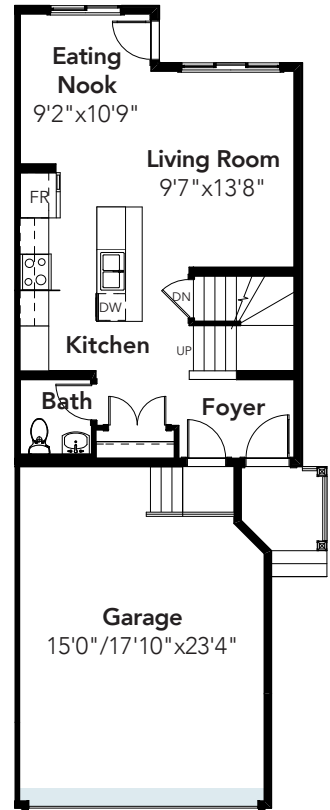
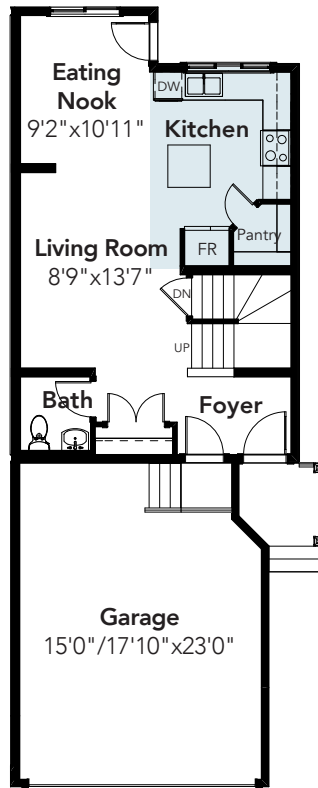
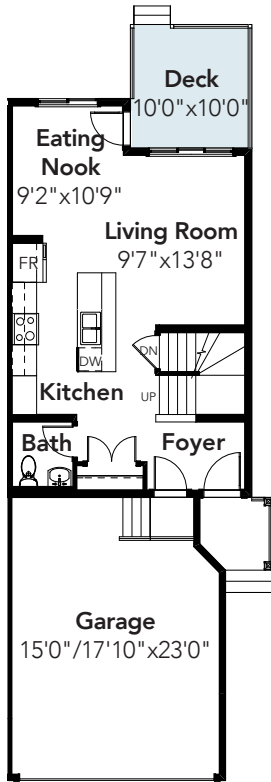
© 2017 Landmark Group of Companies Inc. All rights reserved. Any use or reproduction in whole or in part of these promotional materials without the prior written authorization of Landmark Group of Companies Inc. is strictly prohibited. Floor plans, specifications, pricing and dimensions shown are approximate and subject to change without notice. Artist rendering shown. Interior room dimensions are taken from inside of walls. Garage dimensions are taken from outside of walls. Revised November 7, 2017.

MAIN FLOOR OPTIONS

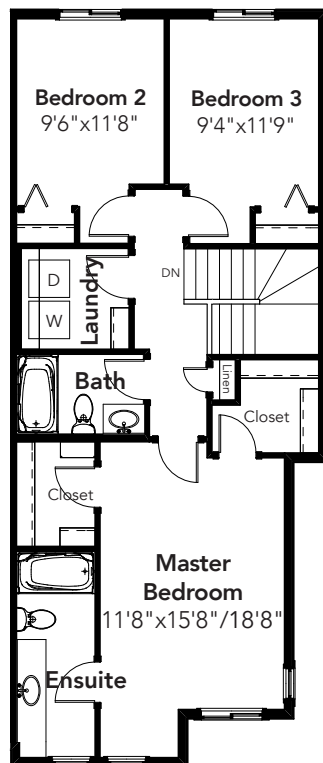
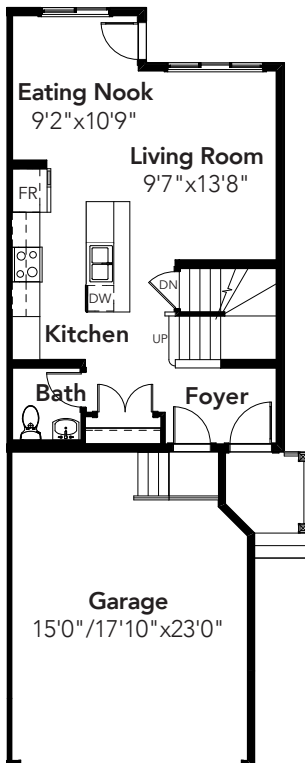
DECK
10'x10'

REAR KITCHEN

LARGER GARAGE
add 1' length

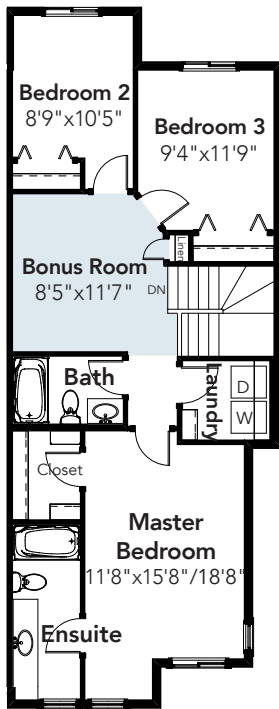


9' MAIN FLOOR

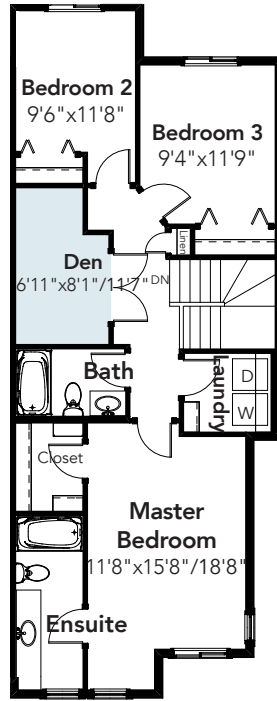


SECOND FLOOR OPTIONS

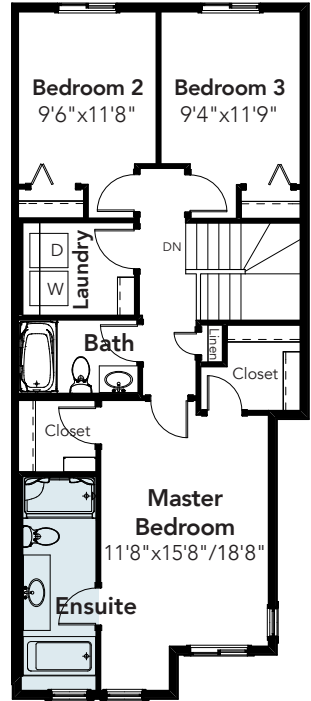
BONUS ROOM



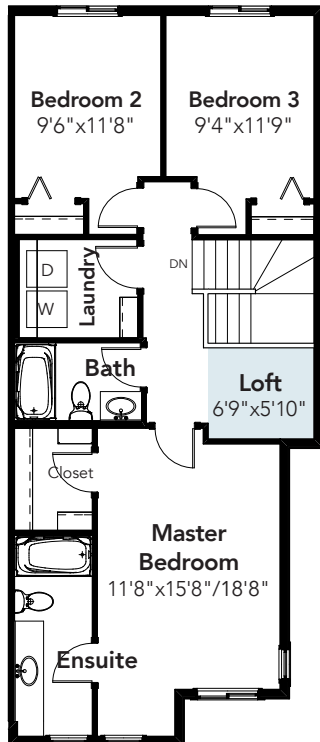
DEN



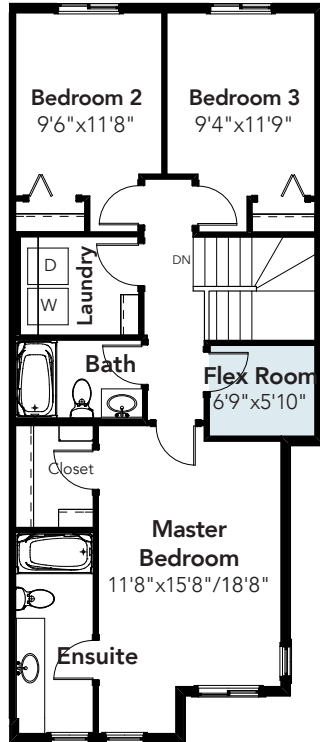
SPA INSPIRED ENSUITE
4 piece ensuite



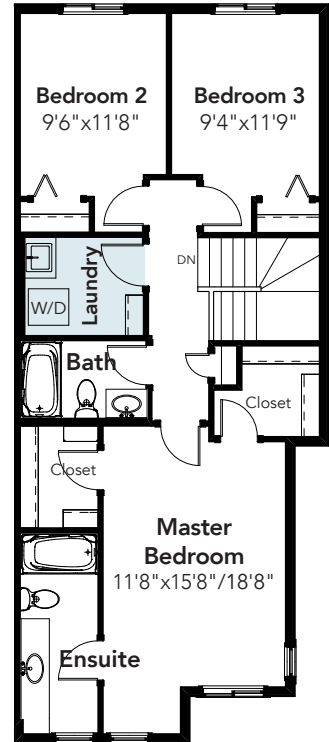
LOFT



FLEX ROOM

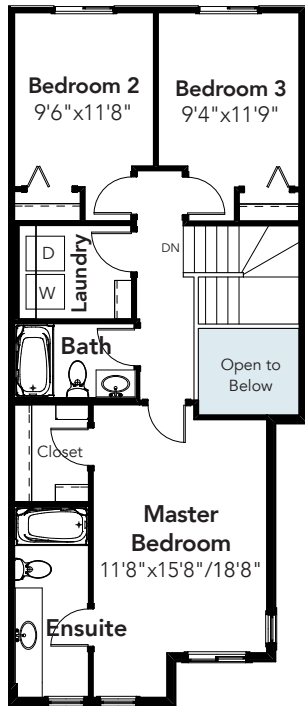


STACKED LAUNDRY
with sink

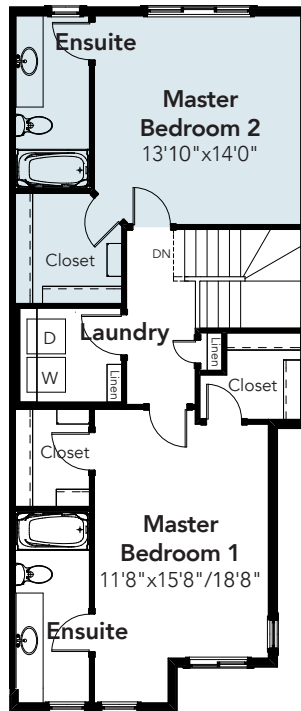


SECOND FLOOR OPTIONS CONT.

OPEN TO BELOW

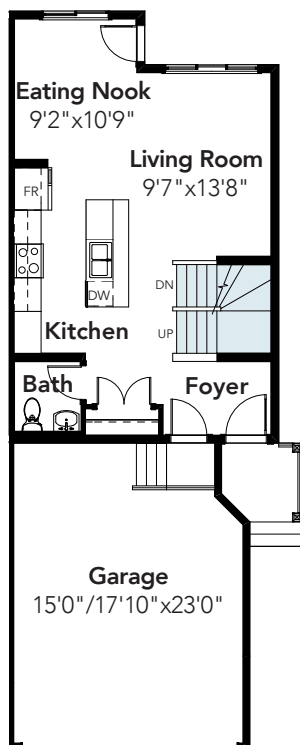


2 MASTER BEDROOMS with laundry



BASEMENT OPTIONS

FINISHED BASEMENT STAIRCASE



BASEMENT DEVELOPMENT

