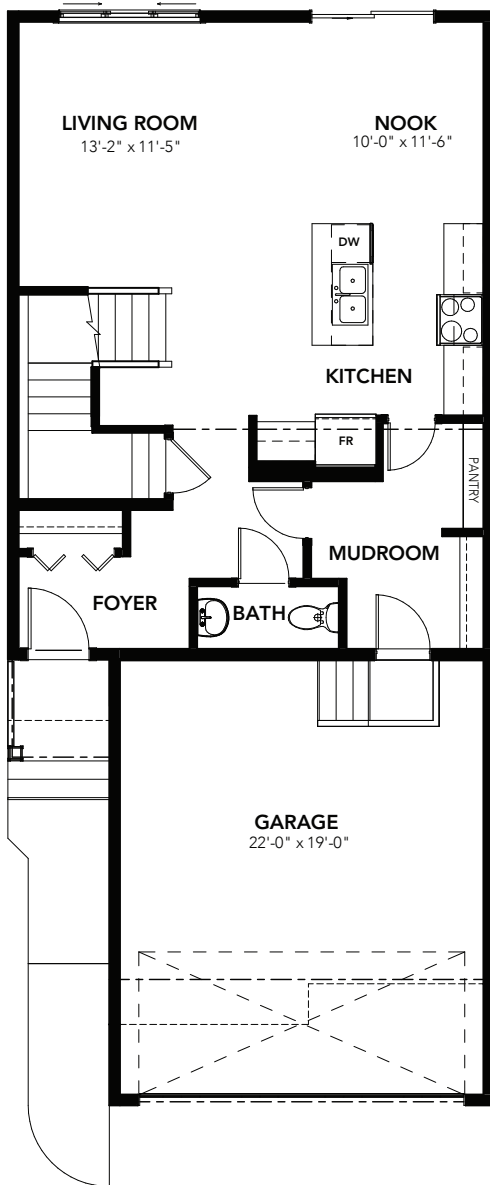
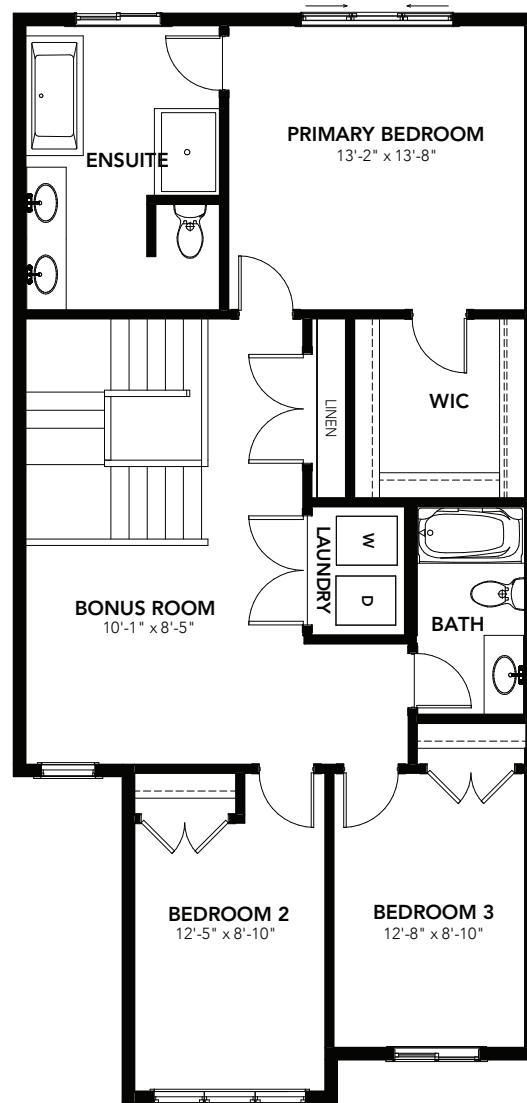


# YUKON

3 BEDS  
2.5 BATHS  
1875 SQ FT  
24' WIDE



MAIN: 768 SQ FT



SECOND: 1107 SQ FT

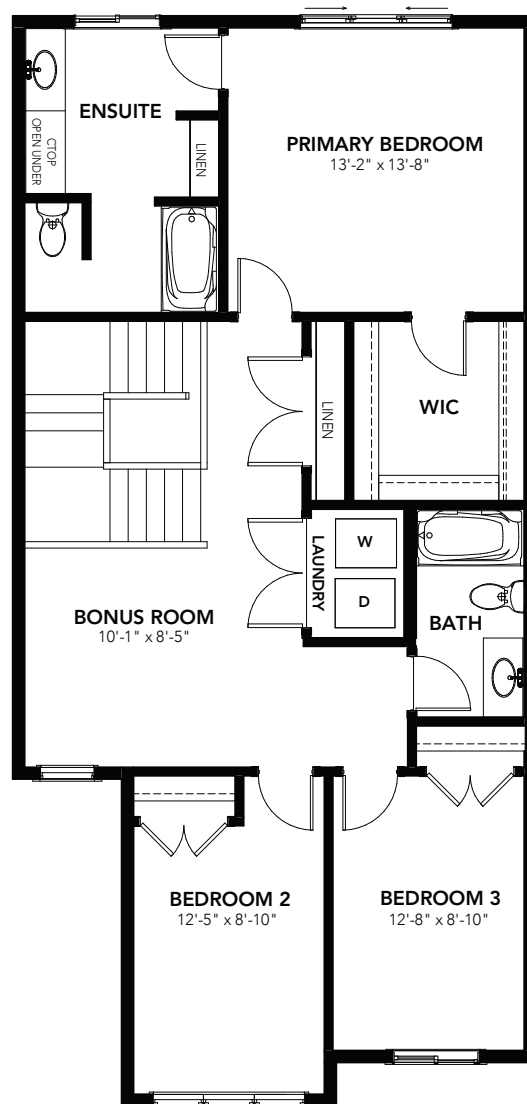


© 2023 Landmark Group of Companies Inc. All rights reserved. Any use or reproduction in whole or in part of these promotional materials without the prior written authorization of Landmark Group of Companies Inc. is strictly prohibited. Floor plans, specifications, pricing and dimensions shown are approximate and subject to change without notice. Artist rendering shown. Interior room dimensions are taken from inside of walls. Garage dimensions are taken from outside of walls. Revised on 02/02/2023.

# YUKON

OPTIONS

3 BEDS  
2.5 BATHS  
1875 SQ FT  
24' WIDE



SECOND FLOOR ENSUITE OPTION:  
1107 SQ FT

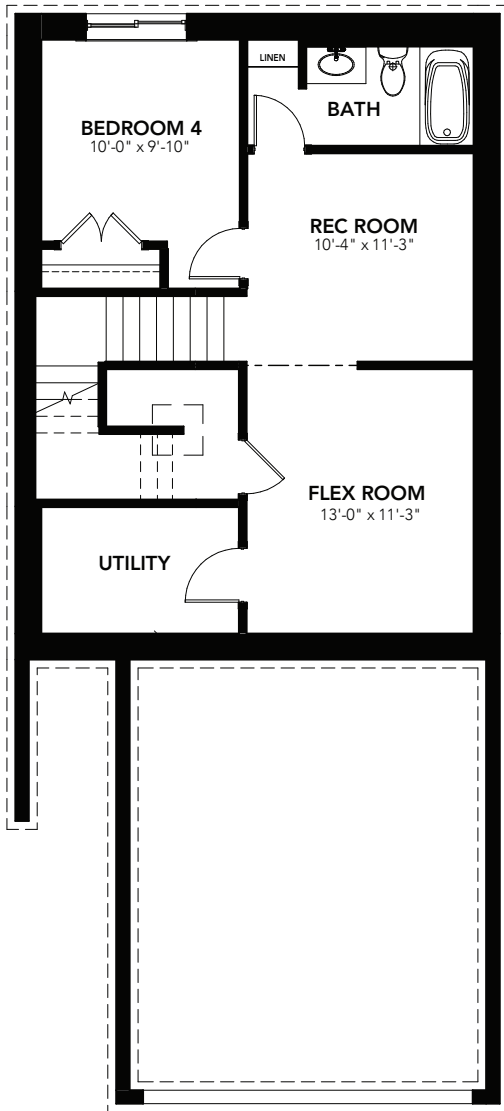


© 2023 Landmark Group of Companies Inc. All rights reserved. Any use or reproduction in whole or in part of these promotional materials without the prior written authorization of Landmark Group of Companies Inc. is strictly prohibited. Floor plans, specifications, pricing and dimensions shown are approximate and subject to change without notice. Artist rendering shown. Interior room dimensions are taken from inside of walls. Garage dimensions are taken from outside of walls. Revised on 02/02/2023.

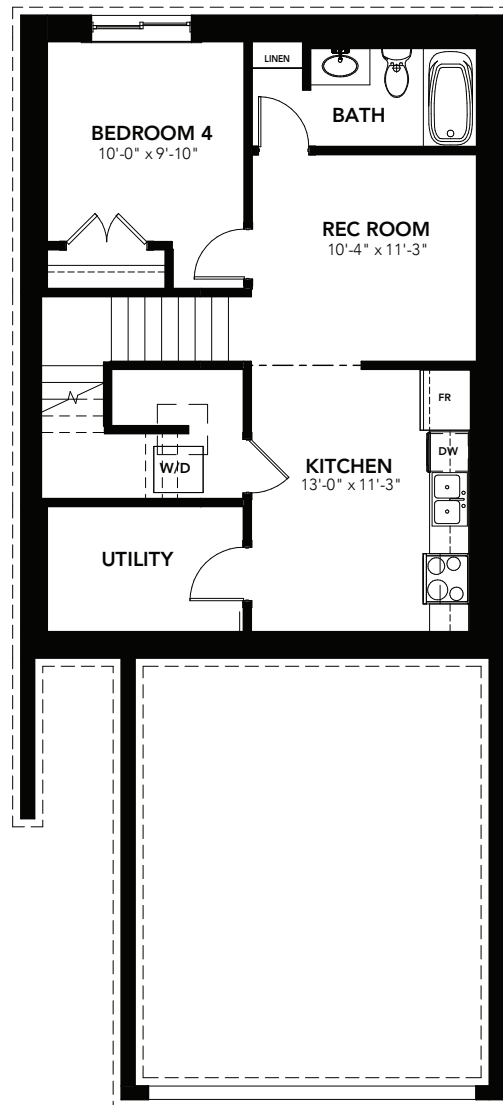
# YUKON

## OPTIONS

3 BEDS  
2.5 BATHS  
1875 SQ FT  
24' WIDE



BASEMENT DEVELOPMENT OPTION:  
512 SQ FT



BASEMENT SUITE OPTION:  
512 SQ FT



© 2023 Landmark Group of Companies Inc. All rights reserved. Any use or reproduction in whole or in part of these promotional materials without the prior written authorization of Landmark Group of Companies Inc. is strictly prohibited. Floor plans, specifications, pricing and dimensions shown are approximate and subject to change without notice. Artist rendering shown. Interior room dimensions are taken from inside of walls. Garage dimensions are taken from outside of walls. Revised on 02/02/2023.