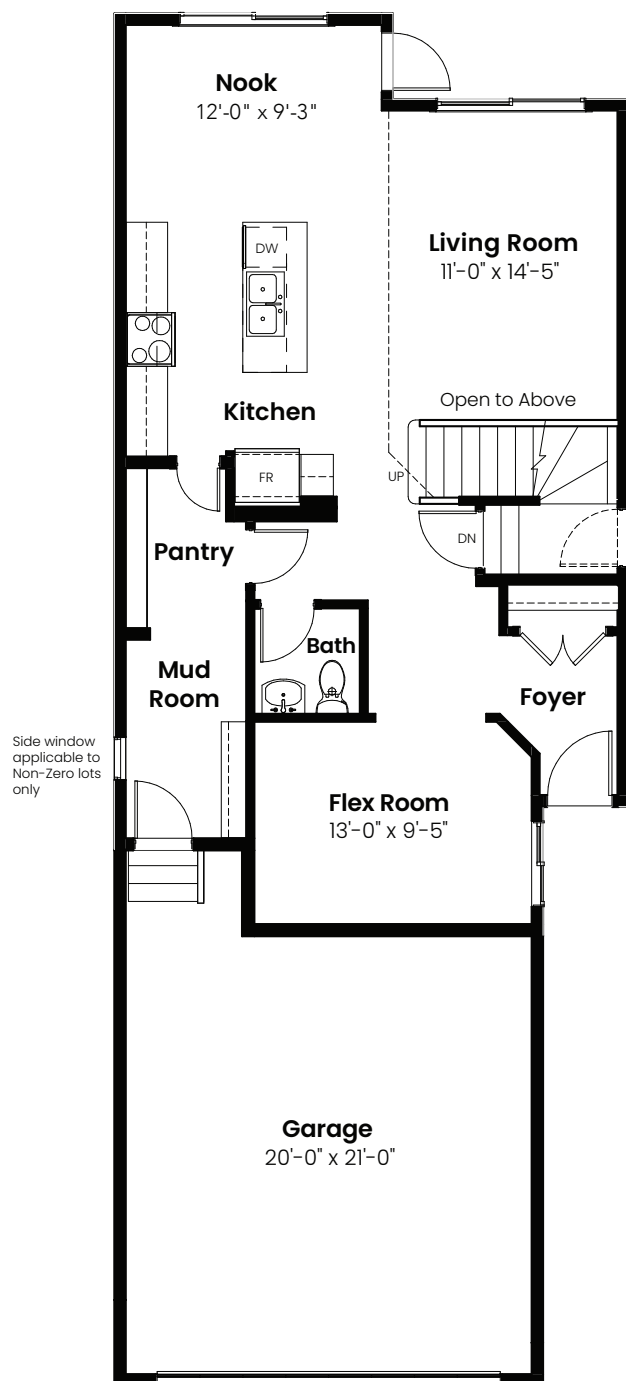


3 Bedrooms | 2.5 Bathrooms

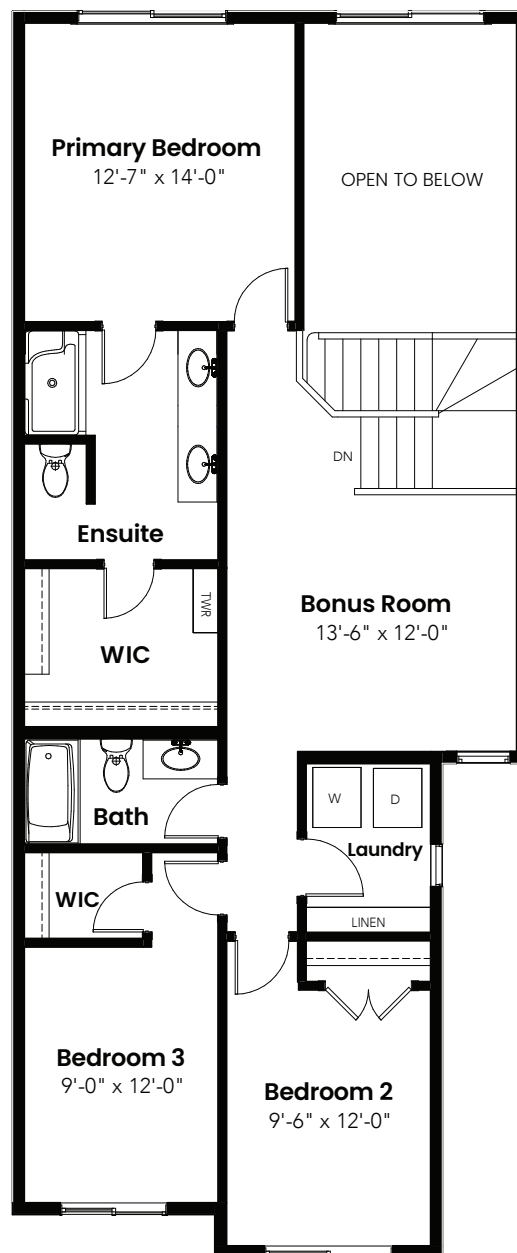
Eiffel

2,076 sqft

24' Wide



Main Floor: 940 Sq Ft



Second Floor: 1136 Sq Ft

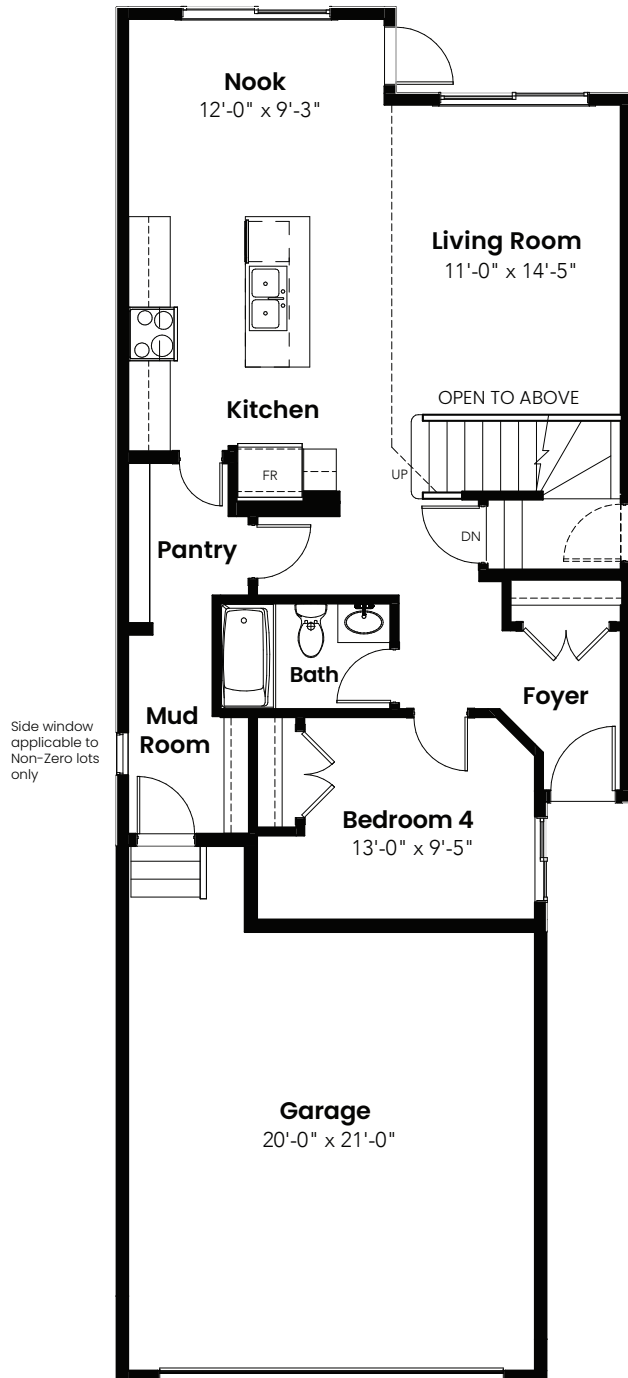


© 2025 Landmark Group of Companies Inc. All rights reserved. Any use or reproduction in whole or in part of these promotional materials without the prior written authorization of Landmark Group of Companies Inc. is strictly prohibited. Floor plans, specifications, pricing and dimensions shown are approximate and subject to change without notice. Artist rendering shown. Interior room dimensions are taken from inside of walls. Garage dimensions are taken from outside of walls. Revised on 12/09/2025.

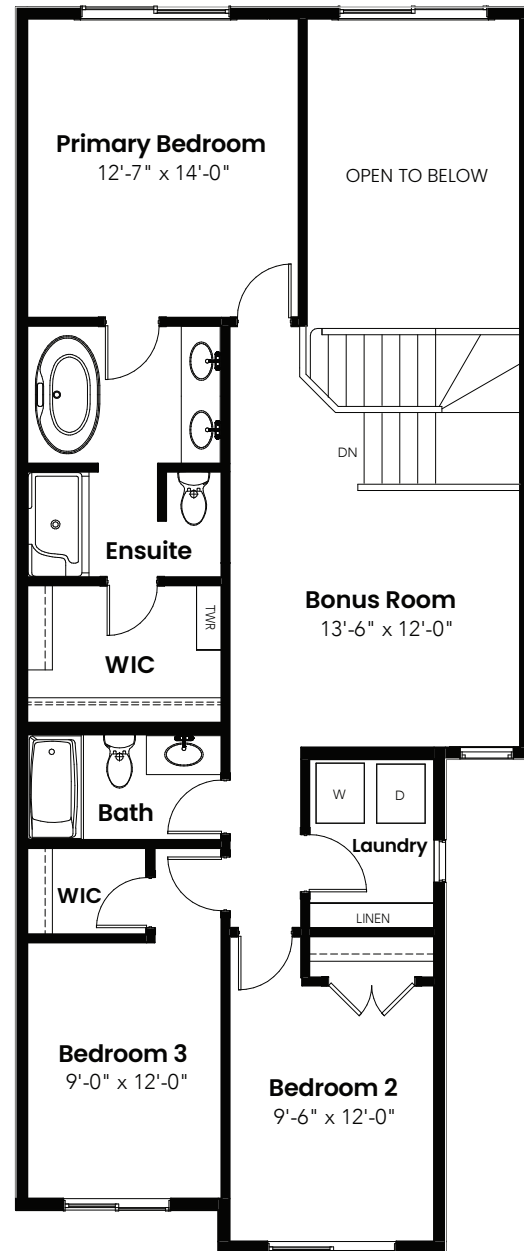
3 Beds | 2.5 Baths | 2,076 Sq. Ft. | 24' Wide

Eiffel

Options



Main Floor Bedroom &
Full Bath Option: 940 Sq Ft



4 Piece Ensuite Option: 1136 Sq Ft

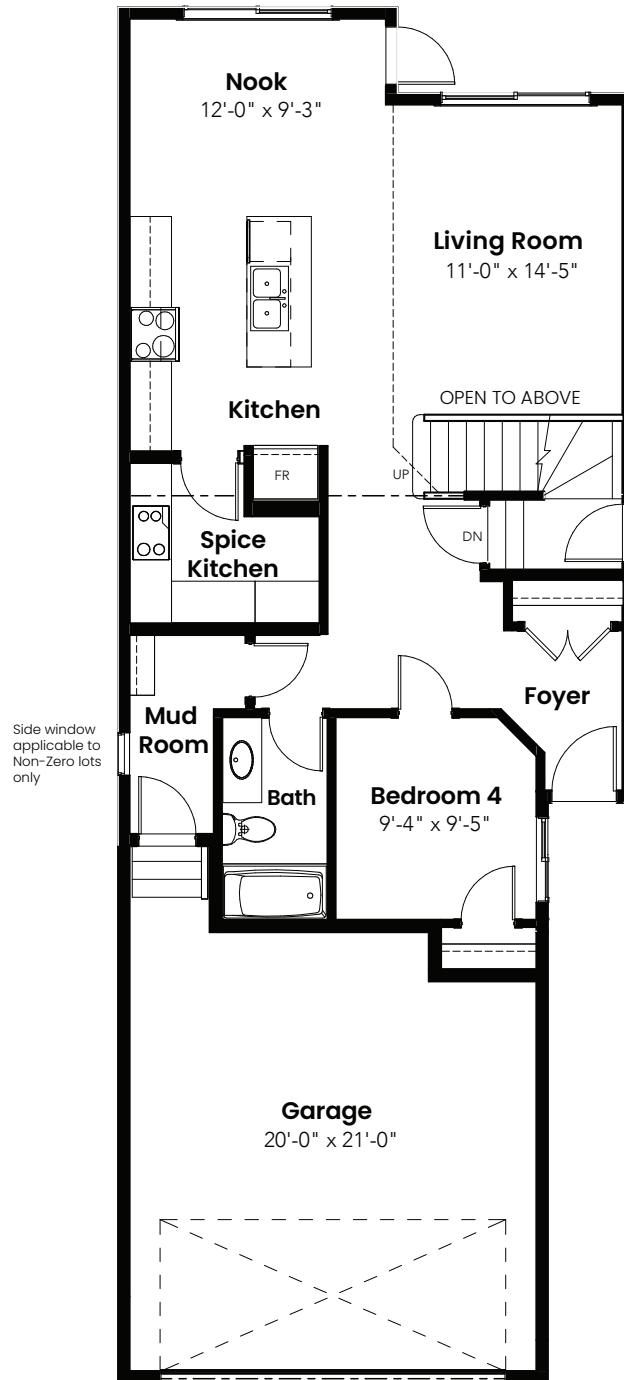


© 2025 Landmark Group of Companies Inc. All rights reserved. Any use or reproduction in whole or in part of these promotional materials without the prior written authorization of Landmark Group of Companies Inc. is strictly prohibited. Floor plans, specifications, pricing and dimensions shown are approximate and subject to change without notice. Artist rendering shown. Interior room dimensions are taken from inside of walls. Garage dimensions are taken from outside of walls. Revised on 12/09/2025.

3 Beds | 2.5 Baths | 2,076 Sq. Ft. | 24' Wide

Eiffel

Options



Spice Kitchen Option: 959 Sq Ft

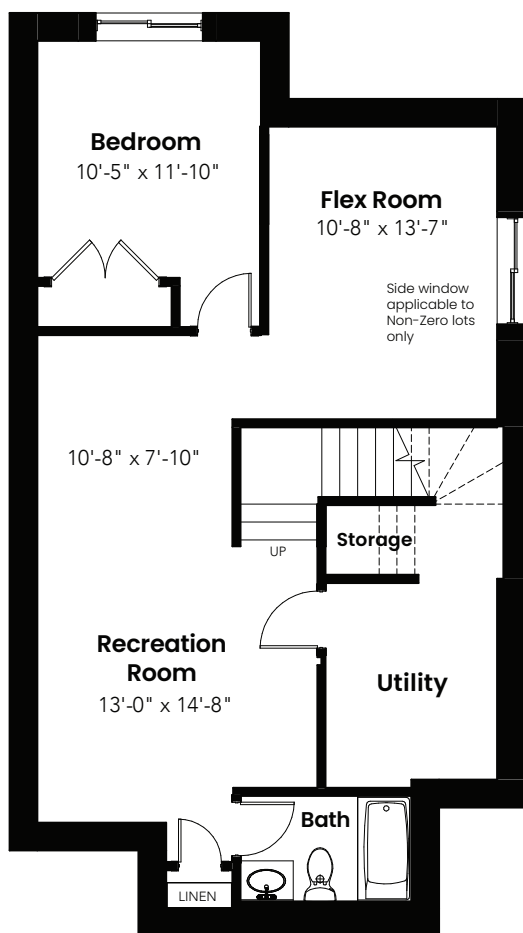


© 2025 Landmark Group of Companies Inc. All rights reserved. Any use or reproduction in whole or in part of these promotional materials without the prior written authorization of Landmark Group of Companies Inc. is strictly prohibited. Floor plans, specifications, pricing and dimensions shown are approximate and subject to change without notice. Artist rendering shown. Interior room dimensions are taken from inside of walls. Garage dimensions are taken from outside of walls. Revised on 12/09/2025.

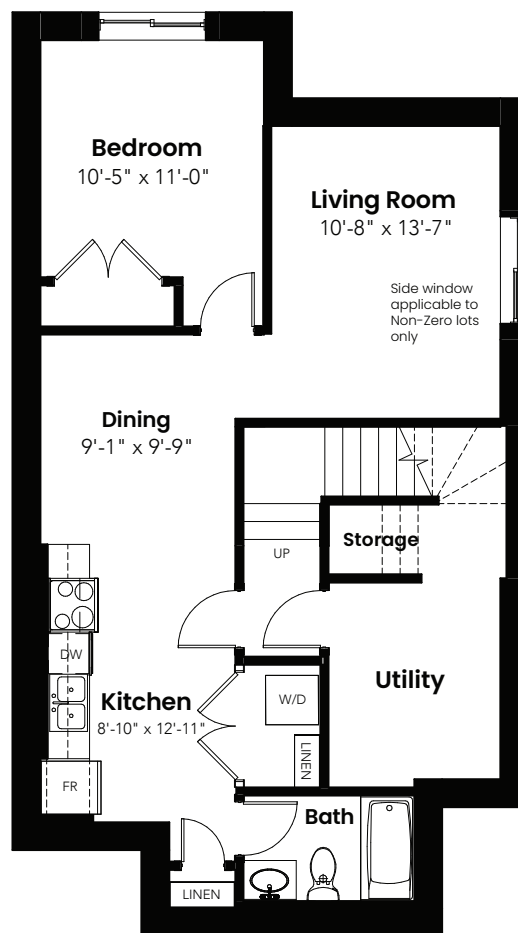
3 Beds | 2.5 Baths | 2,076 Sq. Ft. | 24' Wide

Eiffel

Basement Options



Basement Development
Option: 685 Sq Ft



Basement Suite Option: 685 Sq Ft



© 2025 Landmark Group of Companies Inc. All rights reserved. Any use or reproduction in whole or in part of these promotional materials without the prior written authorization of Landmark Group of Companies Inc. is strictly prohibited. Floor plans, specifications, pricing and dimensions shown are approximate and subject to change without notice. Artist rendering shown. Interior room dimensions are taken from inside of walls. Garage dimensions are taken from outside of walls. Revised on 12/09/2025.

3 Beds | 2.5 Baths | 2,076 Sq. Ft. | 24' Wide

Eiffel

Elevation



© 2025 Landmark Group of Companies Inc. All rights reserved. Any use or reproduction in whole or in part of these promotional materials without the prior written authorization of Landmark Group of Companies Inc. is strictly prohibited. Floor plans, specifications, pricing and dimensions shown are approximate and subject to change without notice. Artist rendering shown. Interior room dimensions are taken from inside of walls. Garage dimensions are taken from outside of walls. Revised on 12/09/2025.