

3 Bedrooms | 2.5 Bathrooms

# Eiffel

# 2,076 sqft

## 24' Wide



Main Floor: 940 Sq Ft

Second Floor: 1136 Sq Ft

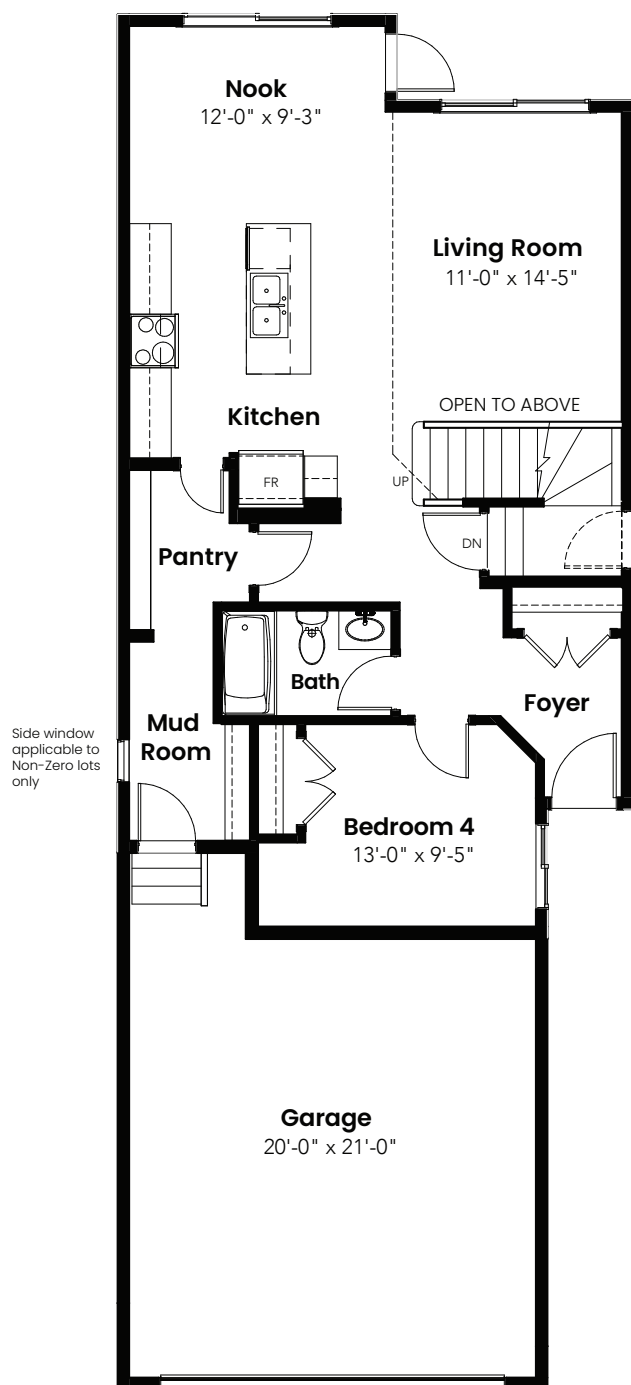


© 2025 Landmark Group of Companies Inc. All rights reserved. Any use or reproduction in whole or in part of these promotional materials without the prior written authorization of Landmark Group of Companies Inc. is strictly prohibited. Floor plans, specifications, pricing and dimensions shown are approximate and subject to change without notice. Artist rendering shown. Interior room dimensions are taken from inside of walls. Garage dimensions are taken from outside of walls. Revised on 12/09/2025.

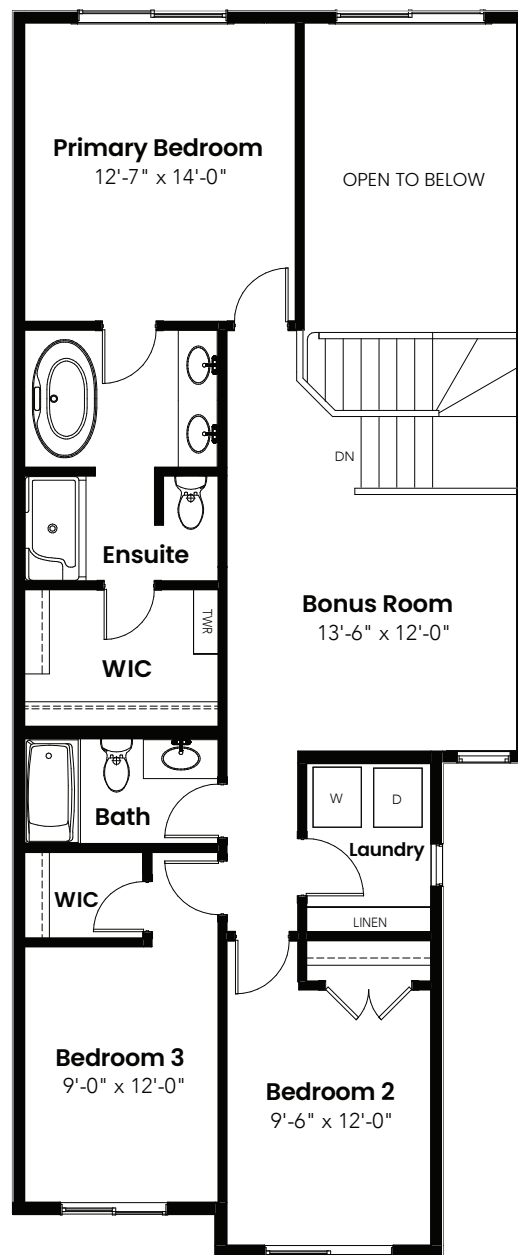
3 Beds | 2.5 Baths | 2,076 Sq. Ft. | 24' Wide

# Eiffel

## Options



Main Floor Bedroom &  
Full Bath Option: 940 Sq Ft



4 Piece Ensuite Option: 1136 Sq Ft

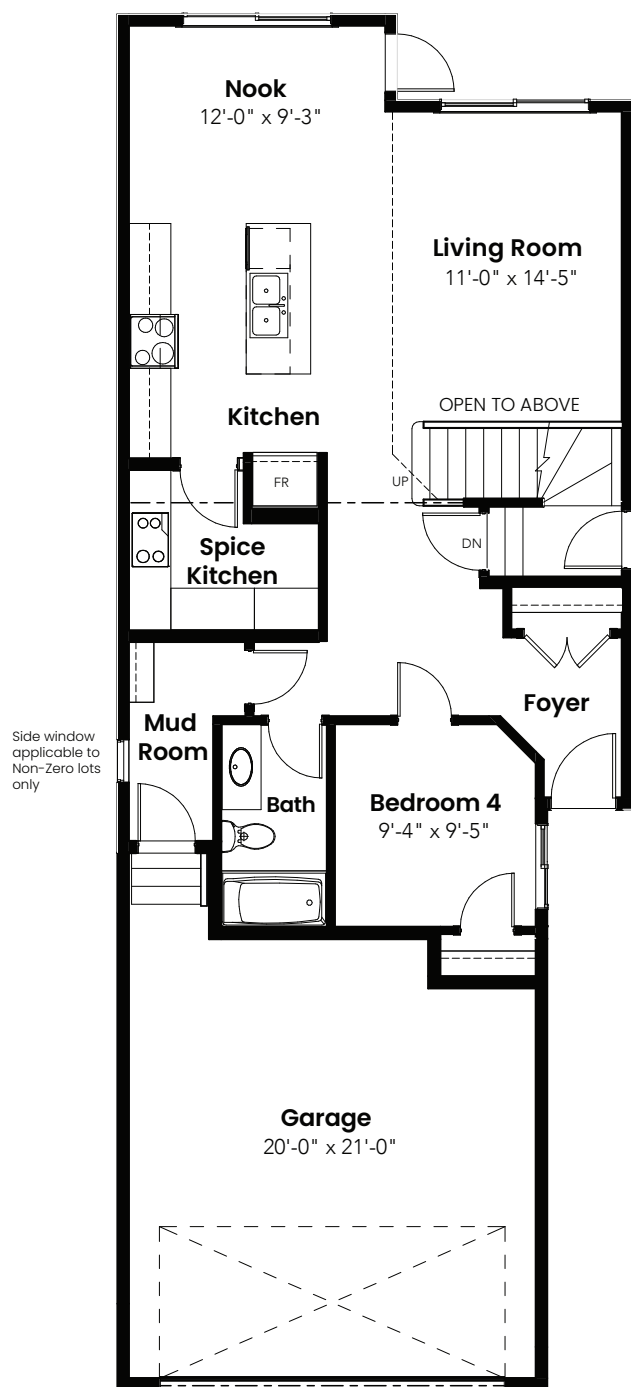


© 2025 Landmark Group of Companies Inc. All rights reserved. Any use or reproduction in whole or in part of these promotional materials without the prior written authorization of Landmark Group of Companies Inc. is strictly prohibited. Floor plans, specifications, pricing and dimensions shown are approximate and subject to change without notice. Artist rendering shown. Interior room dimensions are taken from inside of walls. Garage dimensions are taken from outside of walls. Revised on 12/09/2025.

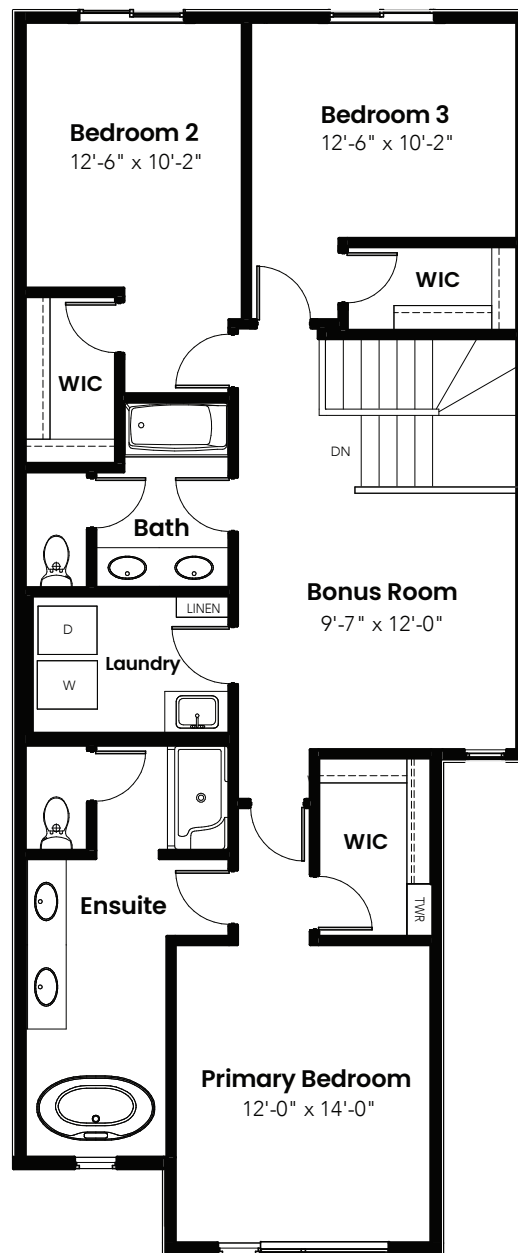
3 Beds | 2.5 Baths | 2,076 Sq. Ft. | 24' Wide

# Eiffel

## Options



Spice Kitchen Option: 959 Sq Ft



Front Primary Bedroom Option: 1272 Sq Ft

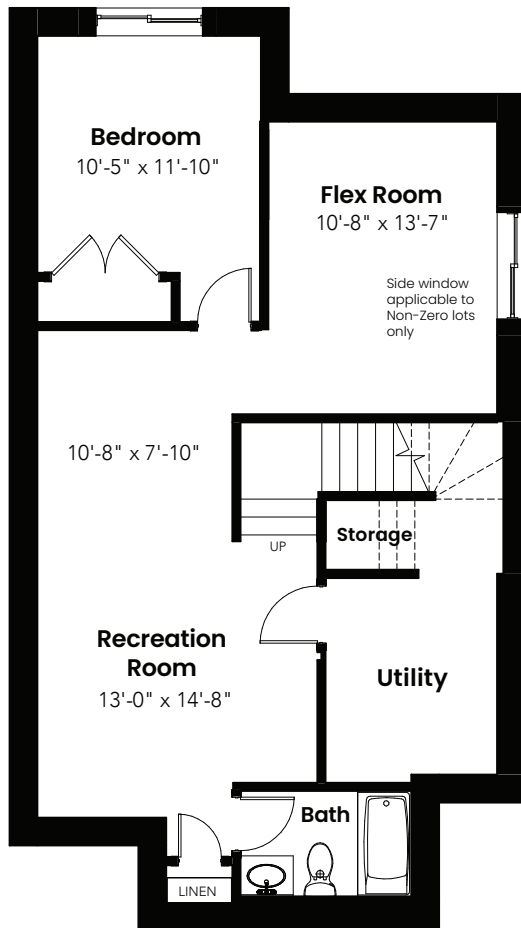


© 2025 Landmark Group of Companies Inc. All rights reserved. Any use or reproduction in whole or in part of these promotional materials without the prior written authorization of Landmark Group of Companies Inc. is strictly prohibited. Floor plans, specifications, pricing and dimensions shown are approximate and subject to change without notice. Artist rendering shown. Interior room dimensions are taken from inside of walls. Garage dimensions are taken from outside of walls. Revised on 12/09/2025.

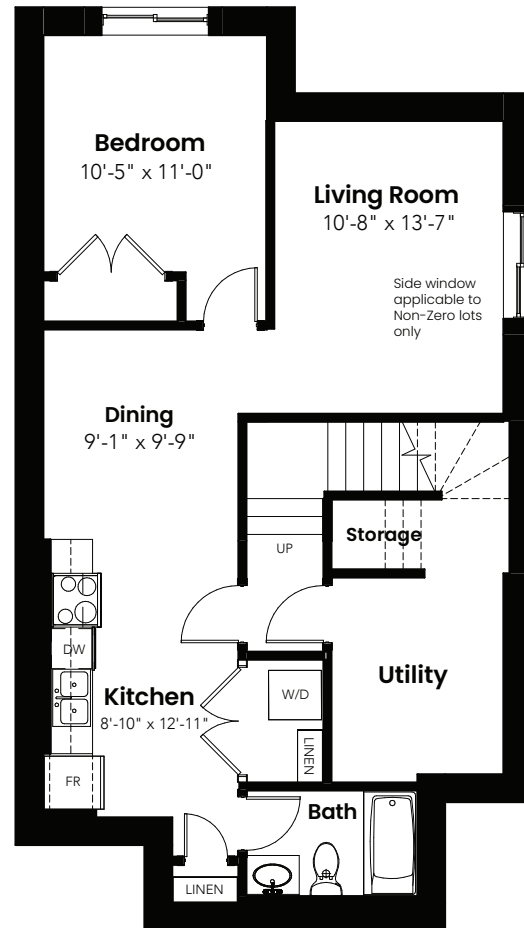
3 Beds | 2.5 Baths | 2,076 Sq. Ft. | 24' Wide

# Eiffel

## Basement Options



Basement Development  
Option: 685 Sq Ft



Basement Suite Option: 685 Sq Ft

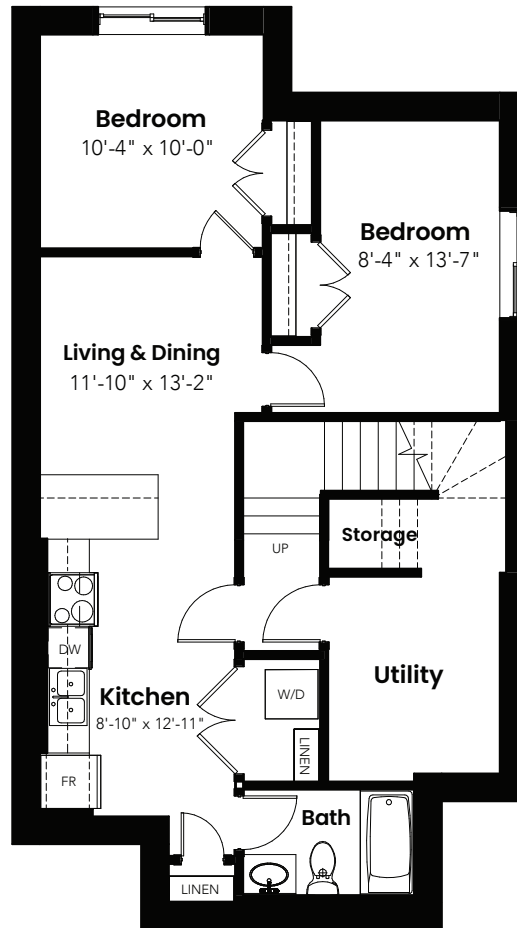


© 2025 Landmark Group of Companies Inc. All rights reserved. Any use or reproduction in whole or in part of these promotional materials without the prior written authorization of Landmark Group of Companies Inc. is strictly prohibited. Floor plans, specifications, pricing and dimensions shown are approximate and subject to change without notice. Artist rendering shown. Interior room dimensions are taken from inside of walls. Garage dimensions are taken from outside of walls. Revised on 12/09/2025.

3 Beds | 2.5 Baths | 2,076 Sq. Ft. | 24' Wide

# Eiffel

## Basement Options



2 Bedroom Basement Suite Option: 685 Sq Ft



© 2025 Landmark Group of Companies Inc. All rights reserved. Any use or reproduction in whole or in part of these promotional materials without the prior written authorization of Landmark Group of Companies Inc. is strictly prohibited. Floor plans, specifications, pricing and dimensions shown are approximate and subject to change without notice. Artist rendering shown. Interior room dimensions are taken from inside of walls. Garage dimensions are taken from outside of walls. Revised on 12/09/2025.



3 Beds | 2.5 Baths | 2,076 Sq. Ft. | 24' Wide

# Eiffel

# Elevation



© 2025 Landmark Group of Companies Inc. All rights reserved. Any use or reproduction in whole or in part of these promotional materials without the prior written authorization of Landmark Group of Companies Inc. is strictly prohibited. Floor plans, specifications, pricing and dimensions shown are approximate and subject to change without notice. Artist rendering shown. Interior room dimensions are taken from inside of walls. Garage dimensions are taken from outside of walls. Revised on 12/09/2025.