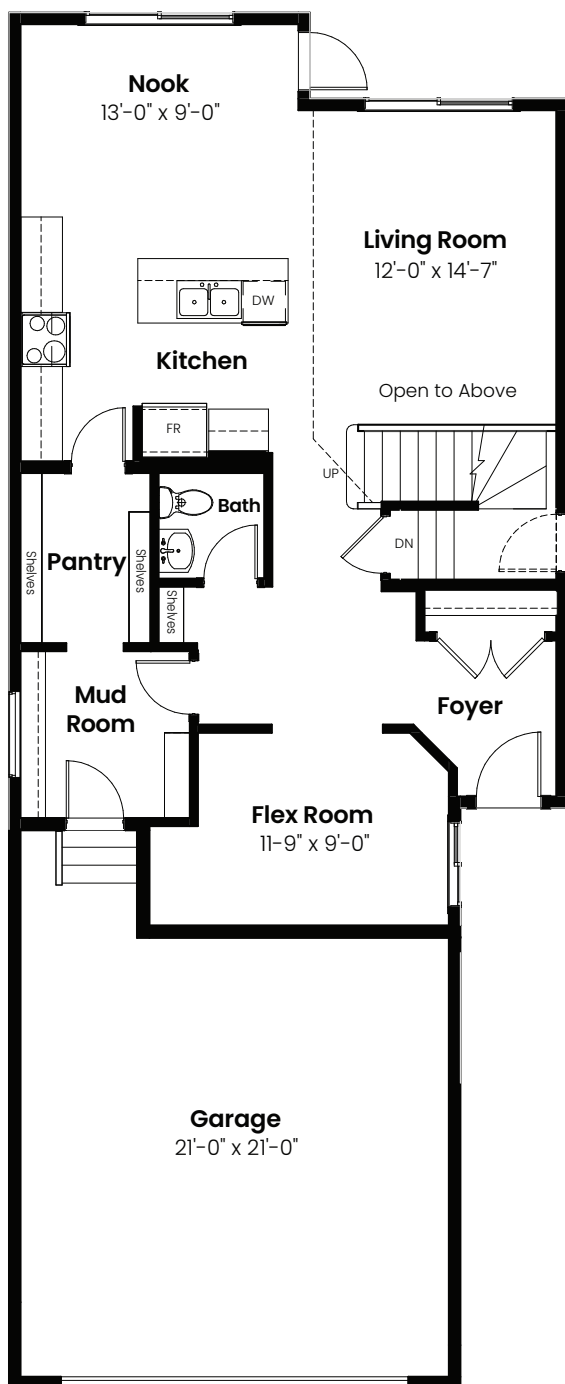


3 Bedrooms | 2.5 Bathrooms

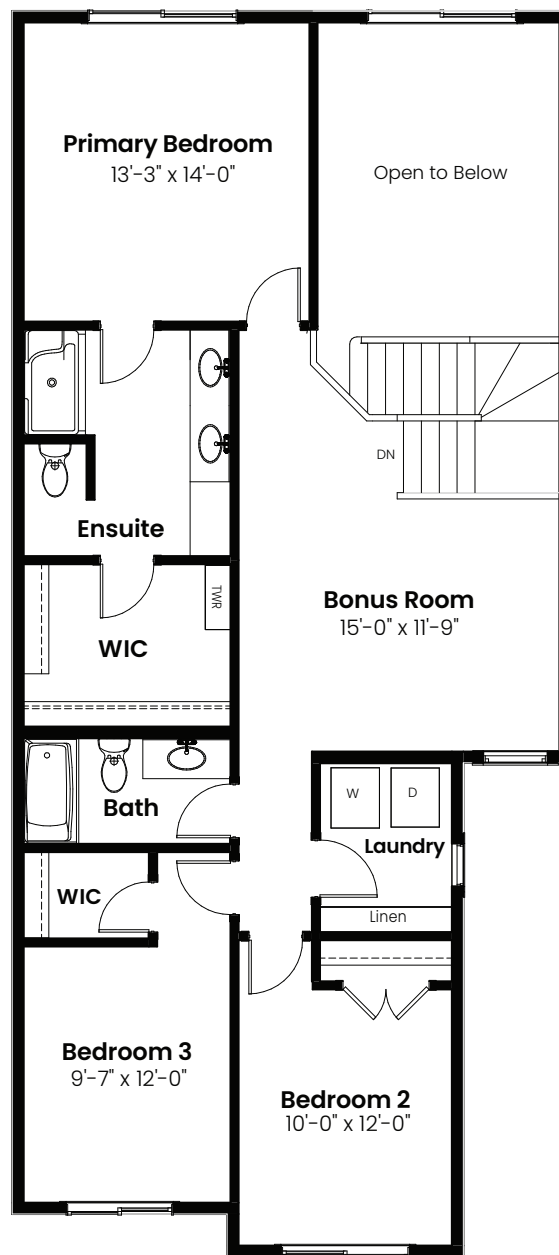
Eiffel

2,215 sqft

26' Wide



Main Floor: 1011 Sq Ft



Second Floor: 1204 Sq Ft

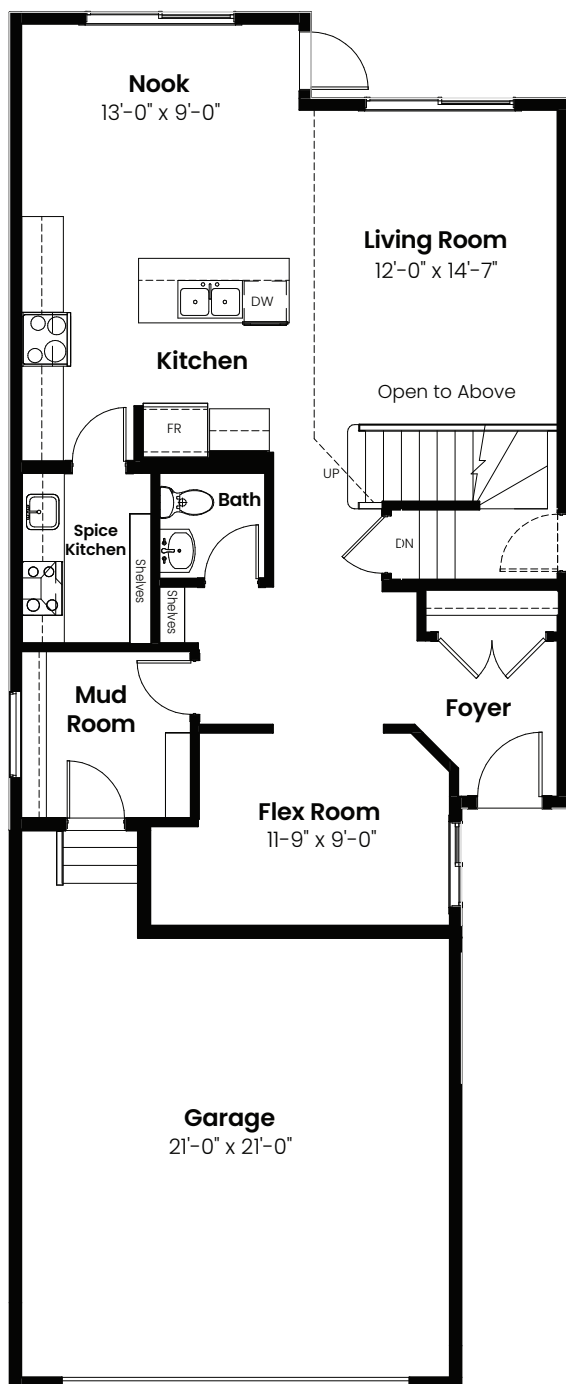


© 2025 Landmark Group of Companies Inc. All rights reserved. Any use or reproduction in whole or in part of these promotional materials without the prior written authorization of Landmark Group of Companies Inc. is strictly prohibited. Floor plans, specifications, pricing and dimensions shown are approximate and subject to change without notice. Artist rendering shown. Interior room dimensions are taken from inside of walls. Garage dimensions are taken from outside of walls. Revised on 08/28/2025.

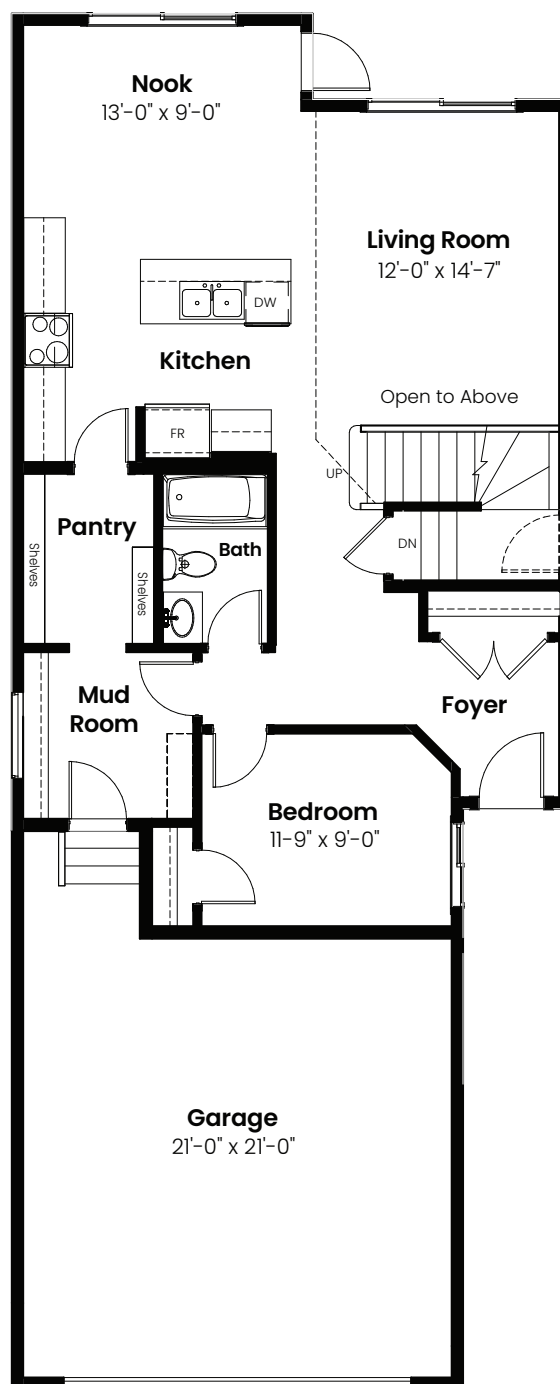
3 Beds | 2.5 Baths | 2,215 Sq. Ft. | 26' Wide

Eiffel

Options



Spice Kitchen Option: 1011 Sq Ft



Main Floor Bedroom
With Full Bath Option: 1010 Sq Ft

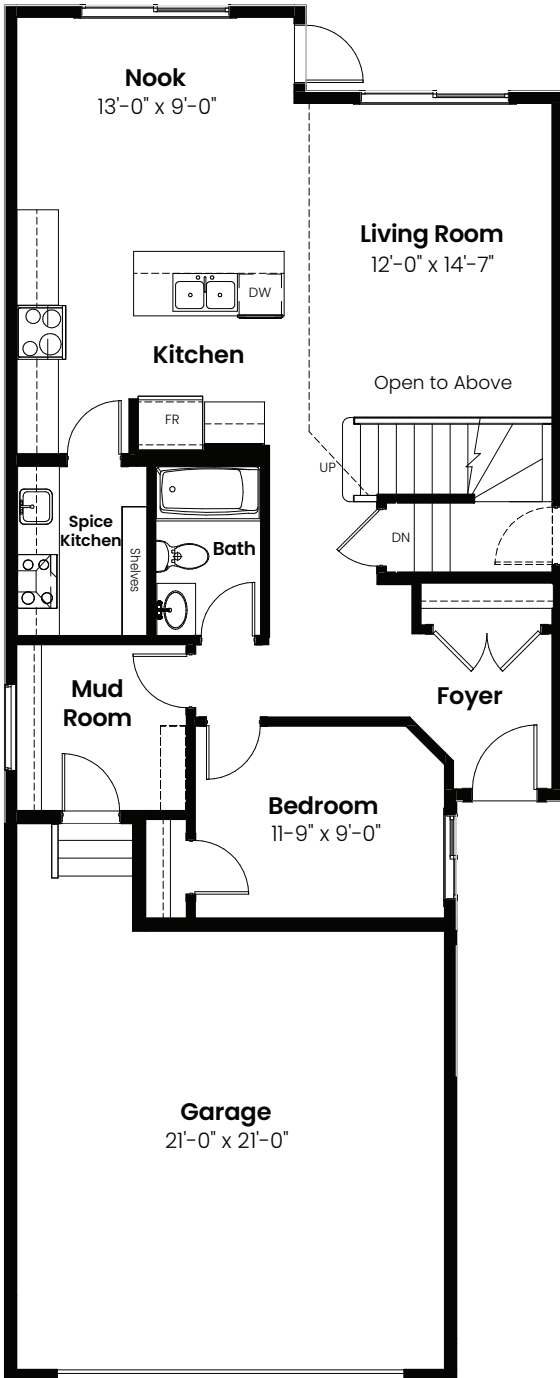


© 2025 Landmark Group of Companies Inc. All rights reserved. Any use or reproduction in whole or in part of these promotional materials without the prior written authorization of Landmark Group of Companies Inc. is strictly prohibited. Floor plans, specifications, pricing and dimensions shown are approximate and subject to change without notice. Artist rendering shown. Interior room dimensions are taken from inside of walls. Garage dimensions are taken from outside of walls. Revised on 08/28/2025.

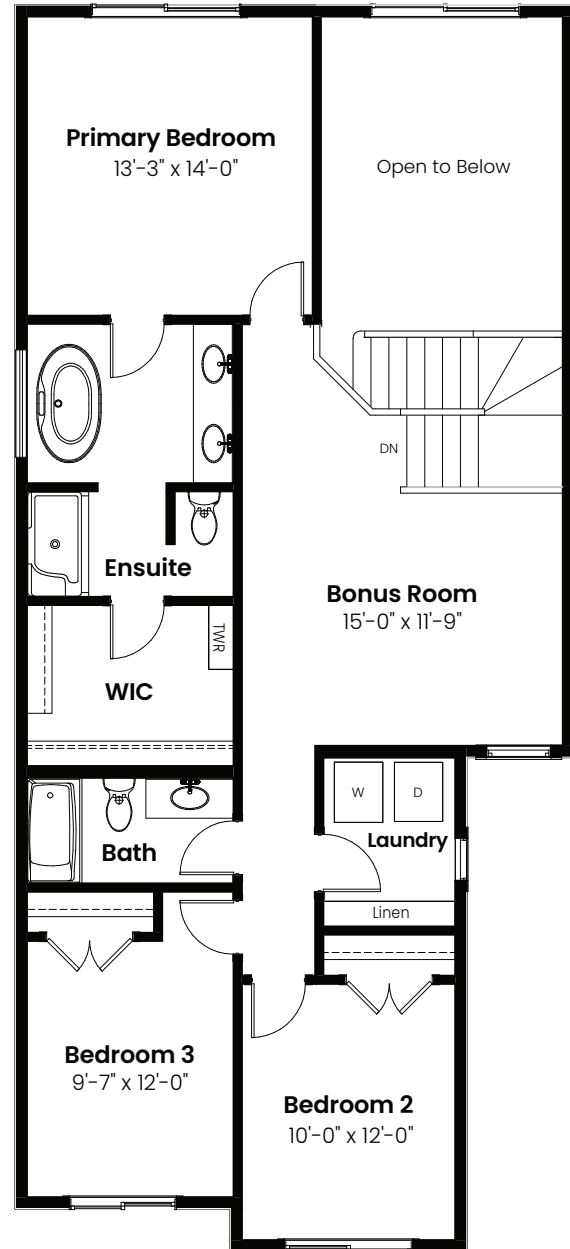
3 Beds | 2.5 Baths | 2,215 Sq. Ft. | 26' Wide

Eiffel

Options



Full Bath With Spice Kitchen
Option: 1010 Sq Ft



4 Piece Ensuite Option: 1204 Sq Ft

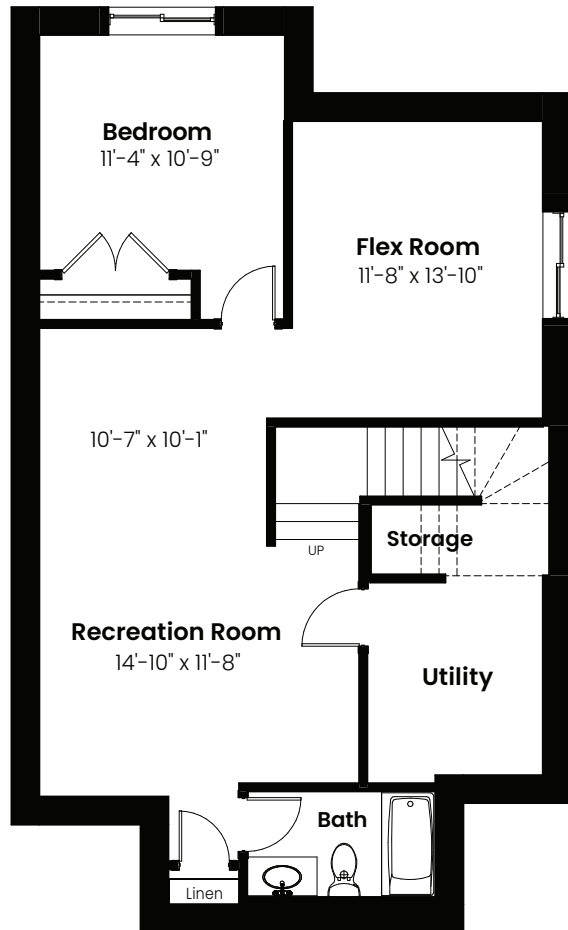


© 2025 Landmark Group of Companies Inc. All rights reserved. Any use or reproduction in whole or in part of these promotional materials without the prior written authorization of Landmark Group of Companies Inc. is strictly prohibited. Floor plans, specifications, pricing and dimensions shown are approximate and subject to change without notice. Artist rendering shown. Interior room dimensions are taken from inside of walls. Garage dimensions are taken from outside of walls. Revised on 08/28/2025.

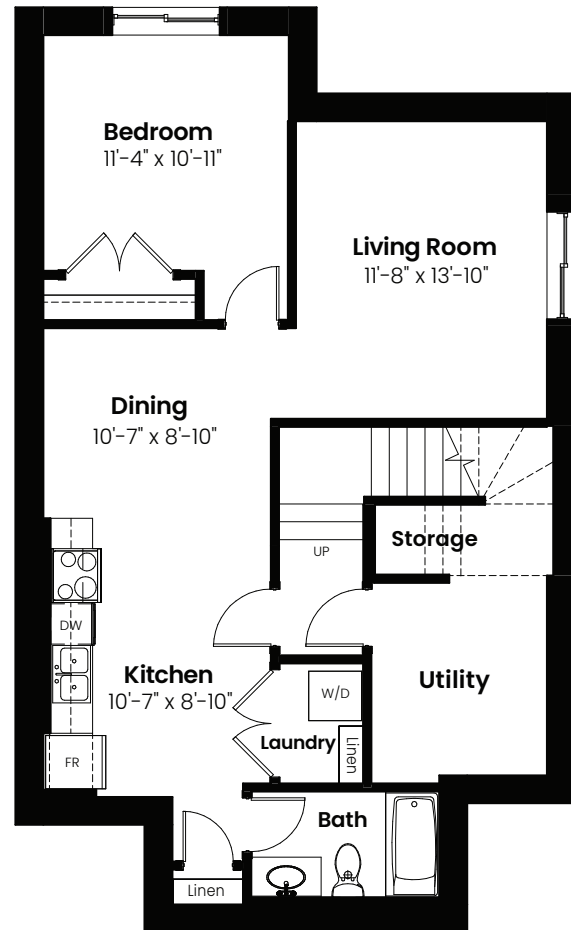
3 Beds | 2.5 Baths | 2,215 Sq. Ft. | 26' Wide

Eiffel

Basement Options



Basement Development
Option: 748 Sq Ft



Basement Suite Option: 748 Sq Ft

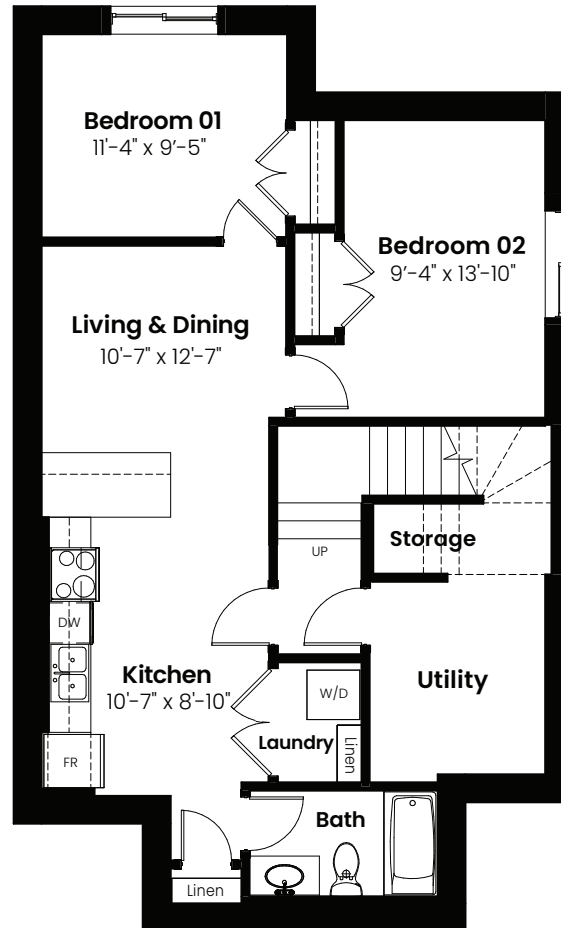


© 2025 Landmark Group of Companies Inc. All rights reserved. Any use or reproduction in whole or in part of these promotional materials without the prior written authorization of Landmark Group of Companies Inc. is strictly prohibited. Floor plans, specifications, pricing and dimensions shown are approximate and subject to change without notice. Artist rendering shown. Interior room dimensions are taken from inside of walls. Garage dimensions are taken from outside of walls. Revised on 08/28/2025.

3 Beds | 2.5 Baths | 2,215 Sq. Ft. | 26' Wide

Eiffel

Basement Options



Basement Suite Option: 748 Sq Ft



© 2025 Landmark Group of Companies Inc. All rights reserved. Any use or reproduction in whole or in part of these promotional materials without the prior written authorization of Landmark Group of Companies Inc. is strictly prohibited. Floor plans, specifications, pricing and dimensions shown are approximate and subject to change without notice. Artist rendering shown. Interior room dimensions are taken from inside of walls. Garage dimensions are taken from outside of walls. Revised on 08/28/2025.

3 Beds | 2.5 Baths | 2,215 Sq. Ft. | 26' Wide

Eiffel

Elevation



© 2025 Landmark Group of Companies Inc. All rights reserved. Any use or reproduction in whole or in part of these promotional materials without the prior written authorization of Landmark Group of Companies Inc. is strictly prohibited. Floor plans, specifications, pricing and dimensions shown are approximate and subject to change without notice. Artist rendering shown. Interior room dimensions are taken from inside of walls. Garage dimensions are taken from outside of walls. Revised on 08/28/2025.