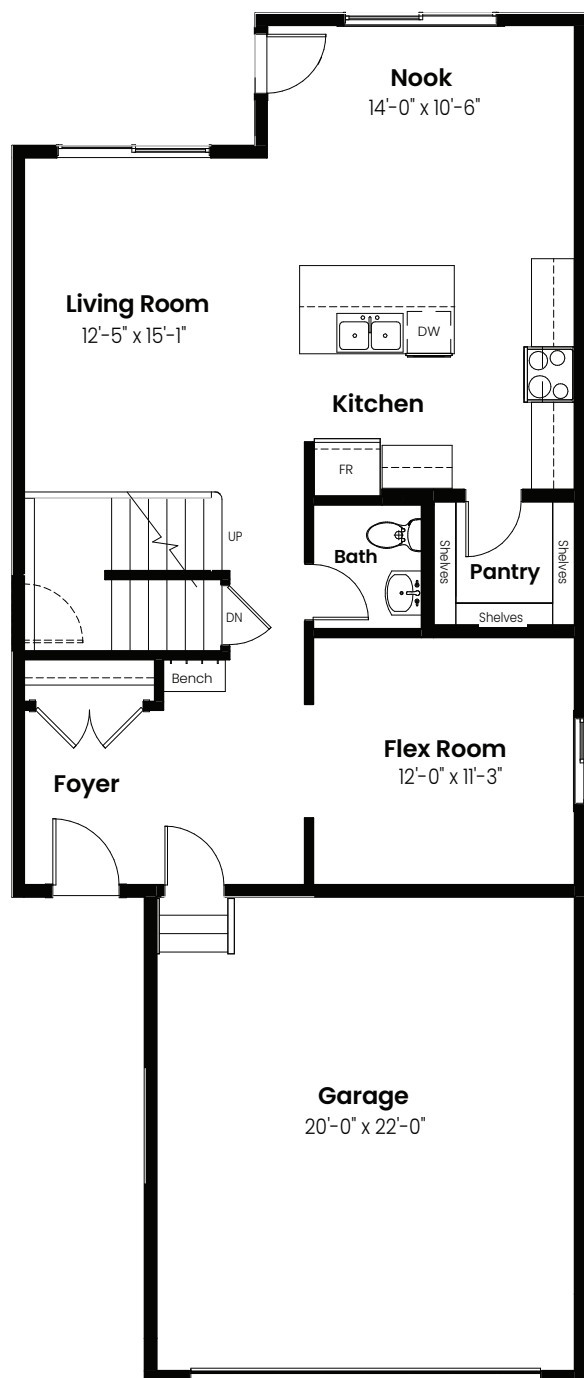


3 Bedrooms | 2.5 Bathrooms

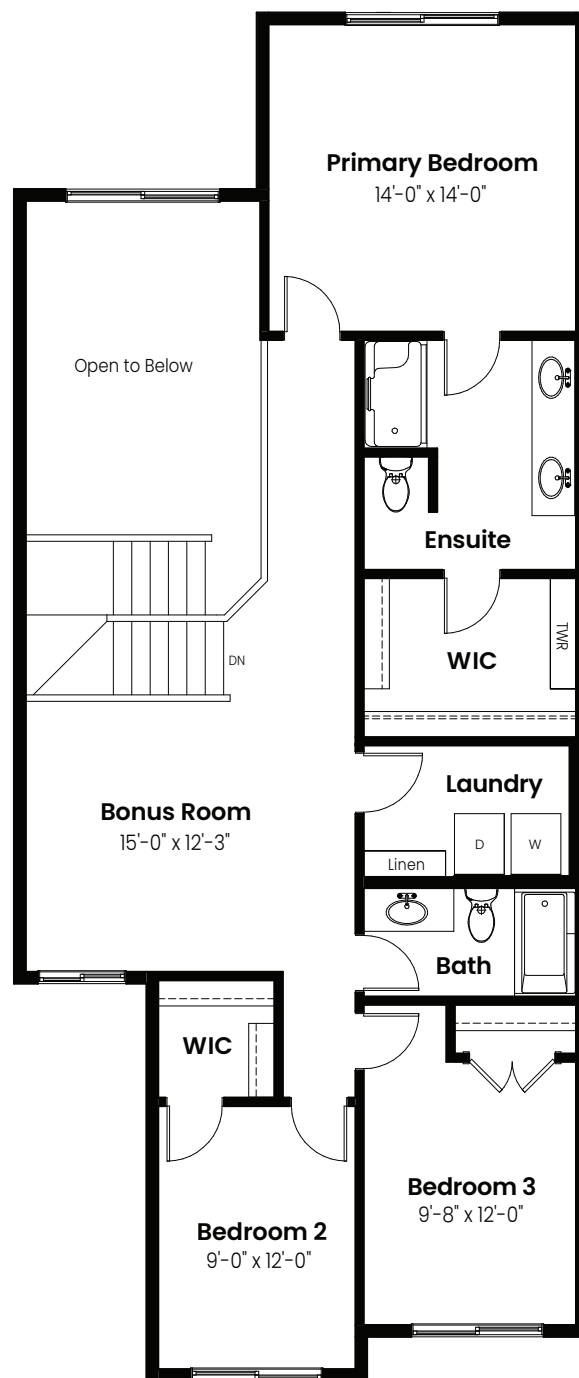
Fuji

2,206 sqft

26' Wide



Main Floor: 975 Sq Ft



Second Floor: 1231 Sq Ft

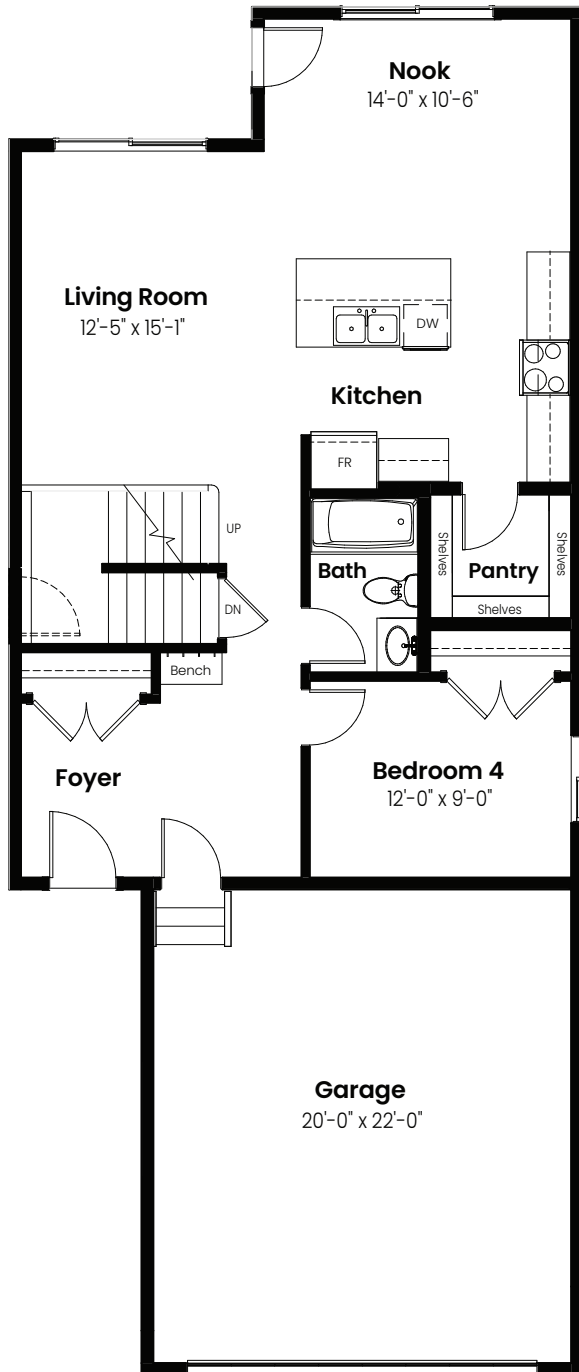


© 2025 Landmark Group of Companies Inc. All rights reserved. Any use or reproduction in whole or in part of these promotional materials without the prior written authorization of Landmark Group of Companies Inc. is strictly prohibited. Floor plans, specifications, pricing and dimensions shown are approximate and subject to change without notice. Artist rendering shown. Interior room dimensions are taken from inside of walls. Garage dimensions are taken from outside of walls. Revised on 06/16/2025.

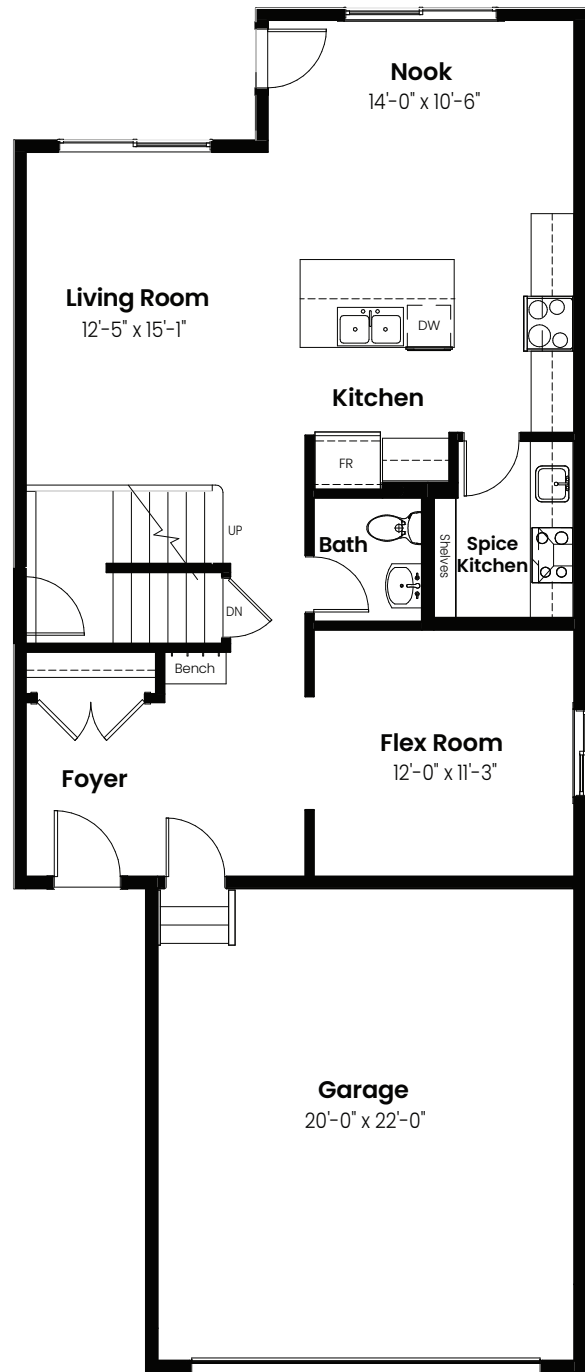
3 Beds | 2.5 Baths | 2,206 Sq. Ft. | 26' Wide

Fuji

Options



Main Floor Bedroom &
Full Bath Option: 975 Sq Ft



Spice Kitchen Option: 975 Sq Ft

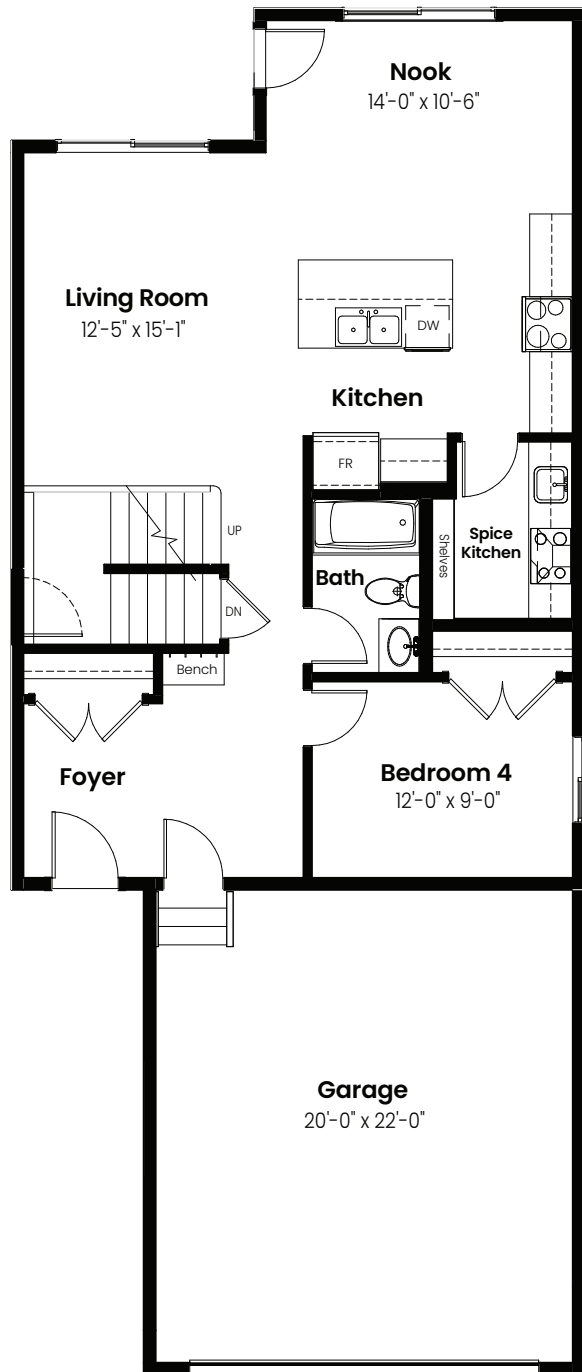


© 2025 Landmark Group of Companies Inc. All rights reserved. Any use or reproduction in whole or in part of these promotional materials without the prior written authorization of Landmark Group of Companies Inc. is strictly prohibited. Floor plans, specifications, pricing and dimensions shown are approximate and subject to change without notice. Artist rendering shown. Interior room dimensions are taken from inside of walls. Garage dimensions are taken from outside of walls. Revised on 06/16/2025.

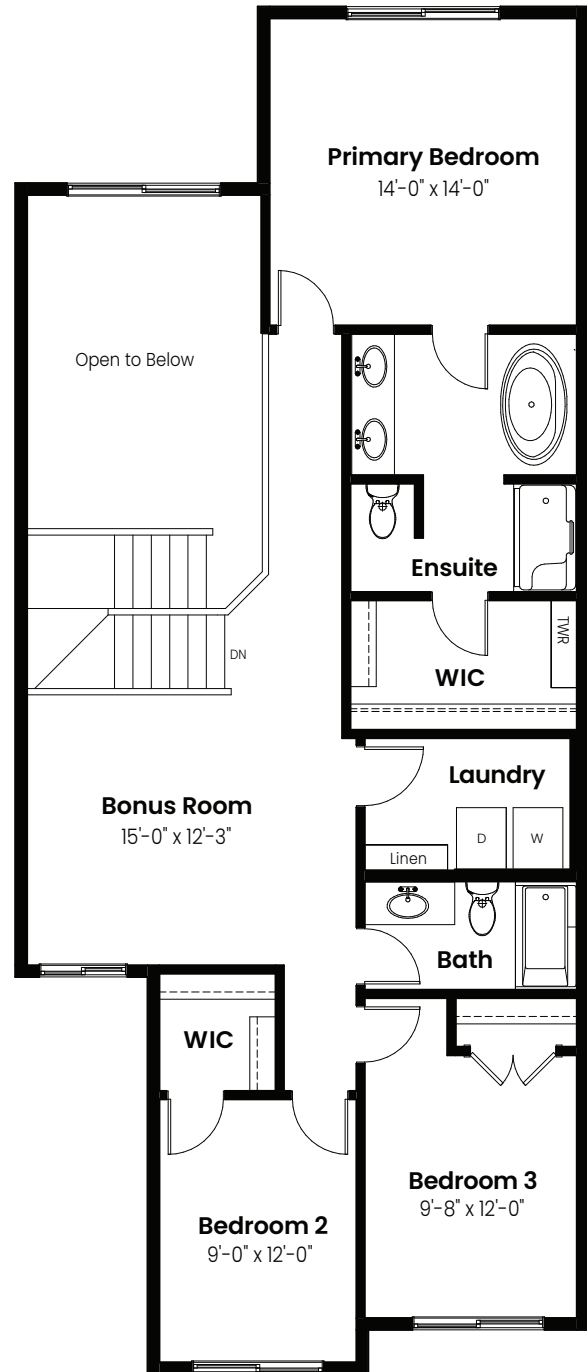
3 Beds | 2.5 Baths | 2,206 Sq. Ft. | 26' Wide

Fuji

Options



Full Bath, Main Floor Bedroom
& Spice Kitchen Option: 975 Sq Ft



4 Piece Ensuite Option: 1231 Sq Ft

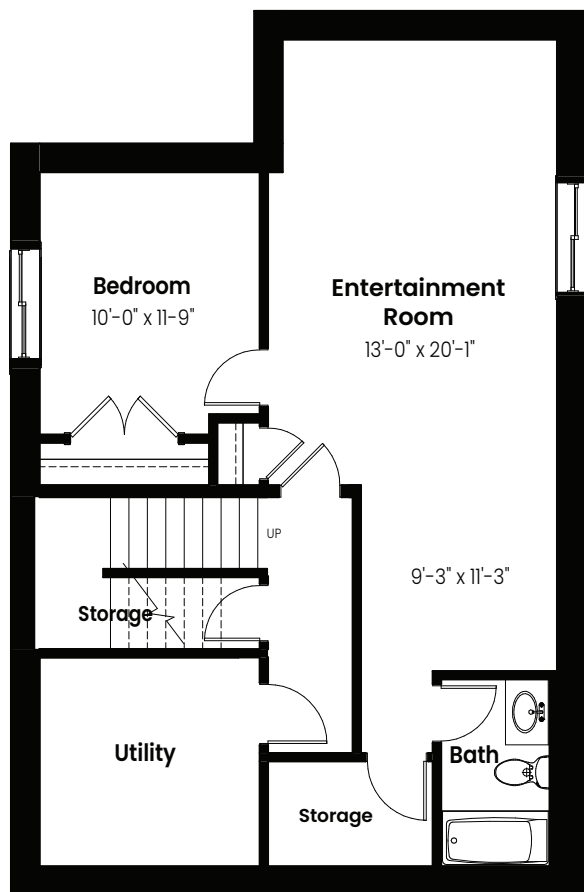


© 2025 Landmark Group of Companies Inc. All rights reserved. Any use or reproduction in whole or in part of these promotional materials without the prior written authorization of Landmark Group of Companies Inc. is strictly prohibited. Floor plans, specifications, pricing and dimensions shown are approximate and subject to change without notice. Artist rendering shown. Interior room dimensions are taken from inside of walls. Garage dimensions are taken from outside of walls. Revised on 06/16/2025.

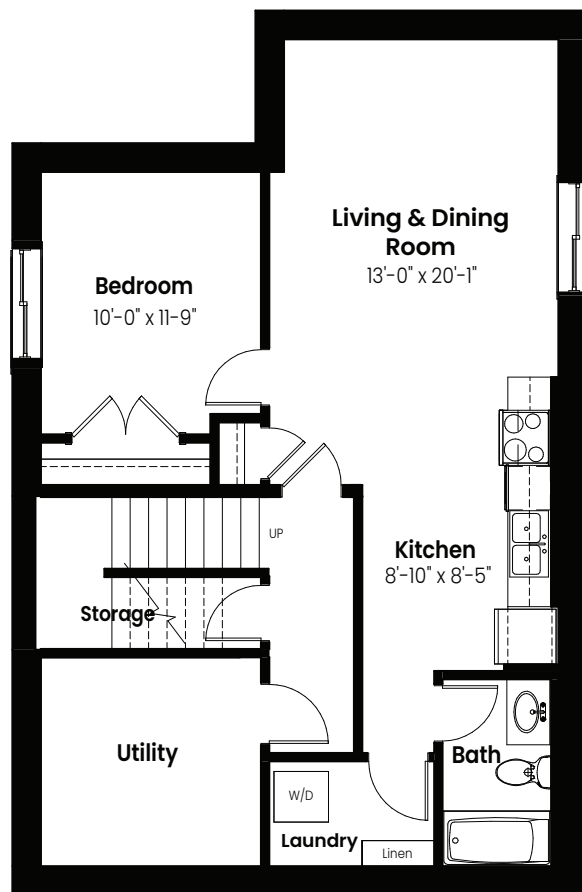
3 Beds | 2.5 Baths | 2,206 Sq. Ft. | 26' Wide

Fuji

Basement Options



Basement Development
Option: 705 Sq Ft



Basement Suite Option: 705 Sq Ft



© 2025 Landmark Group of Companies Inc. All rights reserved. Any use or reproduction in whole or in part of these promotional materials without the prior written authorization of Landmark Group of Companies Inc. is strictly prohibited. Floor plans, specifications, pricing and dimensions shown are approximate and subject to change without notice. Artist rendering shown. Interior room dimensions are taken from inside of walls. Garage dimensions are taken from outside of walls. Revised on 06/16/2025.

3 Beds | 2.5 Baths | 2,206 Sq. Ft. | 26' Wide

Fuji

Elevation



© 2025 Landmark Group of Companies Inc. All rights reserved. Any use or reproduction in whole or in part of these promotional materials without the prior written authorization of Landmark Group of Companies Inc. is strictly prohibited. Floor plans, specifications, pricing and dimensions shown are approximate and subject to change without notice. Artist rendering shown. Interior room dimensions are taken from inside of walls. Garage dimensions are taken from outside of walls. Revised on 06/16/2025.