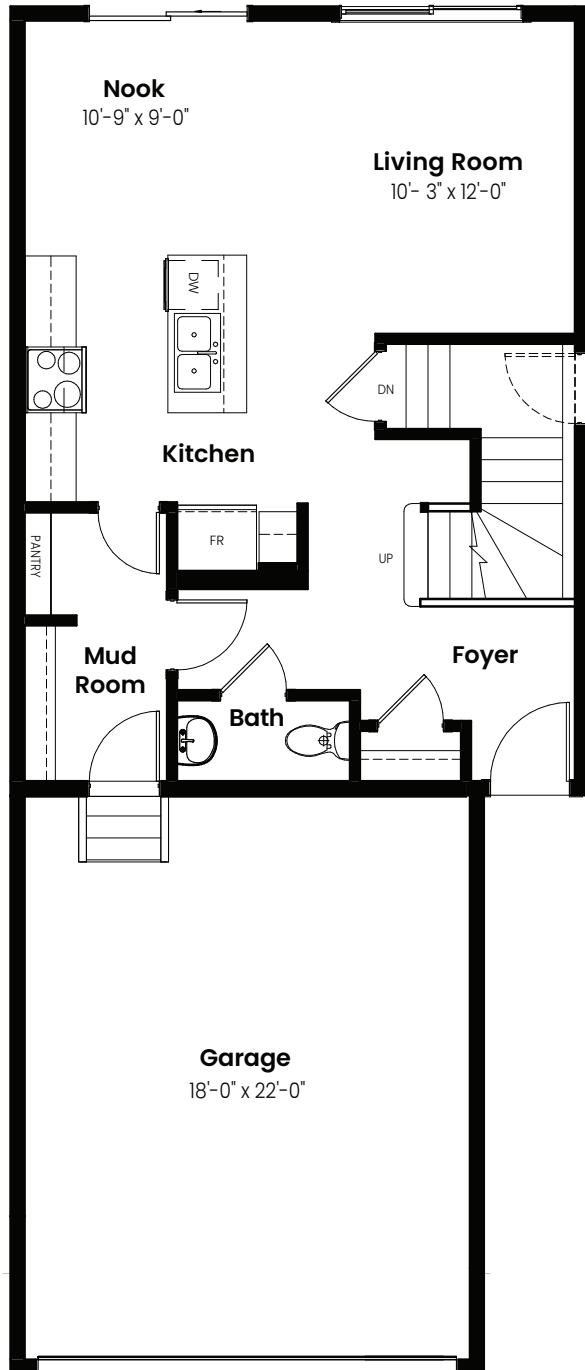


3 Bedrooms | 2.5 Bathrooms

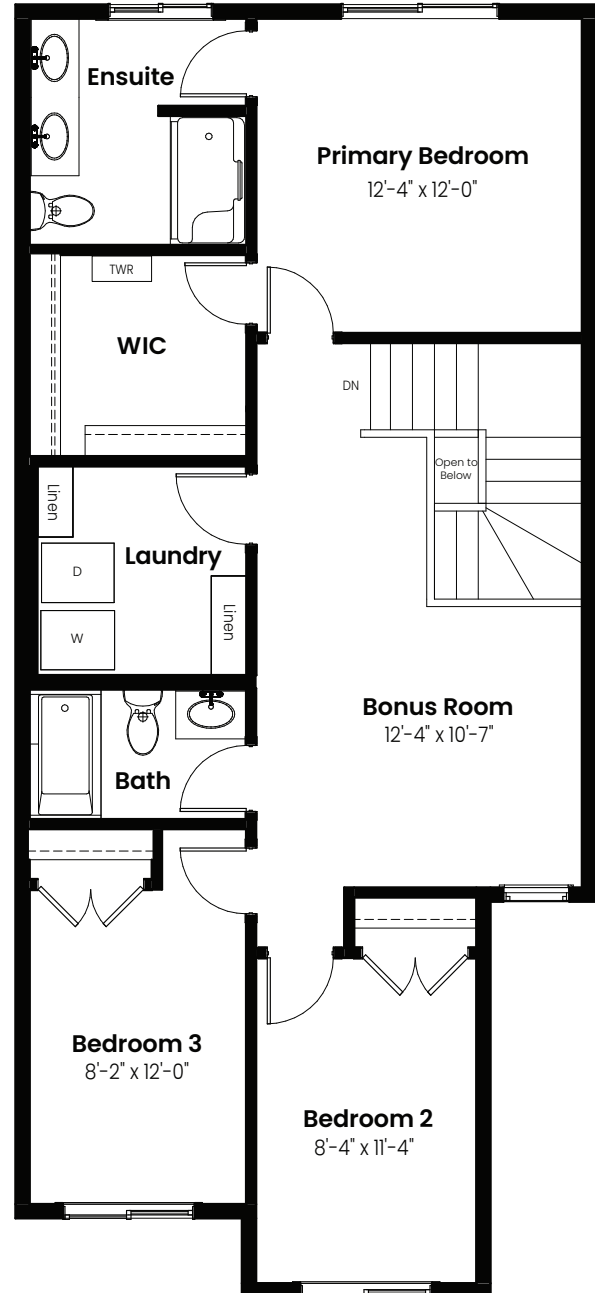
# Louvre

# 1,648 sqft

22' Wide



Main Floor: 660 Sq Ft



Second Floor: 988 Sq Ft

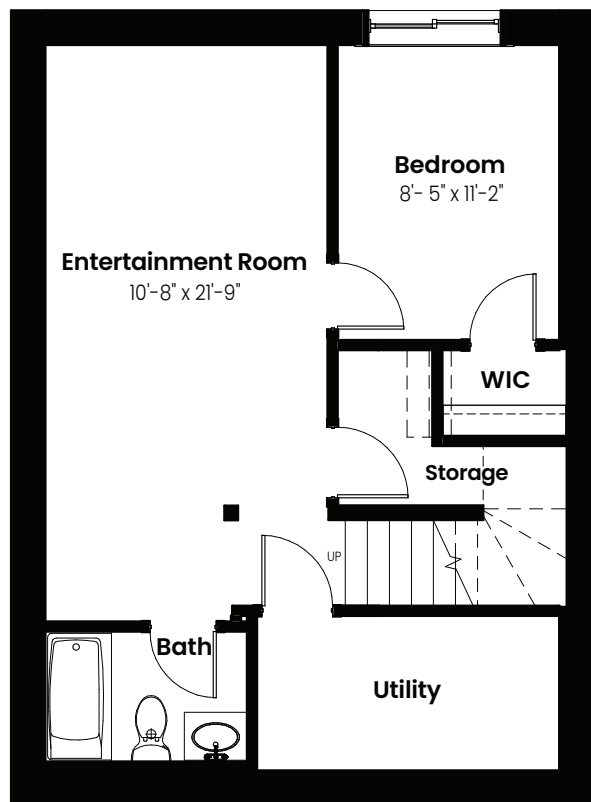


© 2024 Landmark Group of Companies Inc. All rights reserved. Any use or reproduction in whole or in part of these promotional materials without the prior written authorization of Landmark Group of Companies Inc. is strictly prohibited. Floor plans, specifications, pricing and dimensions shown are approximate and subject to change without notice. Artist rendering shown. Interior room dimensions are taken from inside of walls. Garage dimensions are taken from outside of walls. Revised on 06/16/2025.

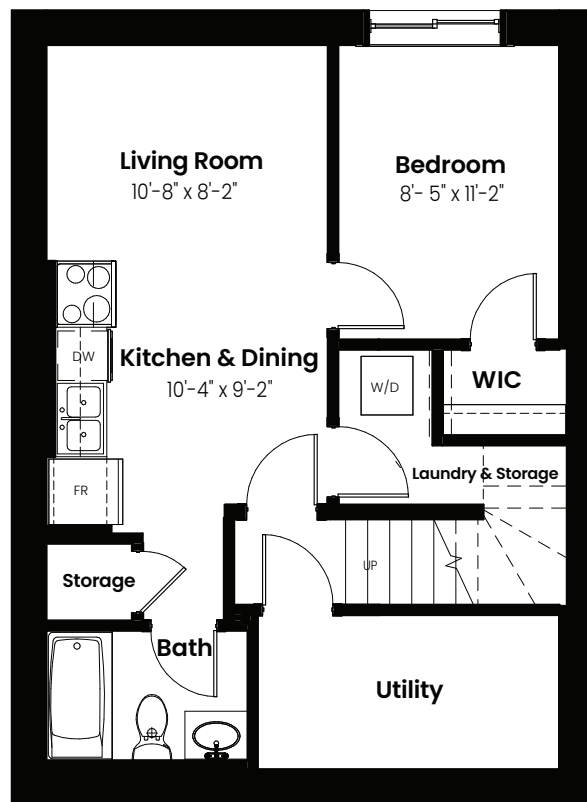
3 Beds | 2.5 Baths | 1,648 Sq. Ft. | 22' Wide

# Louvre

## Basement Options



Basement Development  
Option: 443 Sq Ft



Basement Suite Option: 467 Sq Ft



© 2024 Landmark Group of Companies Inc. All rights reserved. Any use or reproduction in whole or in part of these promotional materials without the prior written authorization of Landmark Group of Companies Inc. is strictly prohibited. Floor plans, specifications, pricing and dimensions shown are approximate and subject to change without notice. Artist rendering shown. Interior room dimensions are taken from inside of walls. Garage dimensions are taken from outside of walls. Revised on 06/16/2025.

3 Beds | 2.5 Baths | 1,648 Sq. Ft. | 22' Wide

# Louvre

## Elevation



© 2024 Landmark Group of Companies Inc. All rights reserved. Any use or reproduction in whole or in part of these promotional materials without the prior written authorization of Landmark Group of Companies Inc. is strictly prohibited. Floor plans, specifications, pricing and dimensions shown are approximate and subject to change without notice. Artist rendering shown. Interior room dimensions are taken from inside of walls. Garage dimensions are taken from outside of walls. Revised on 06/16/2025.