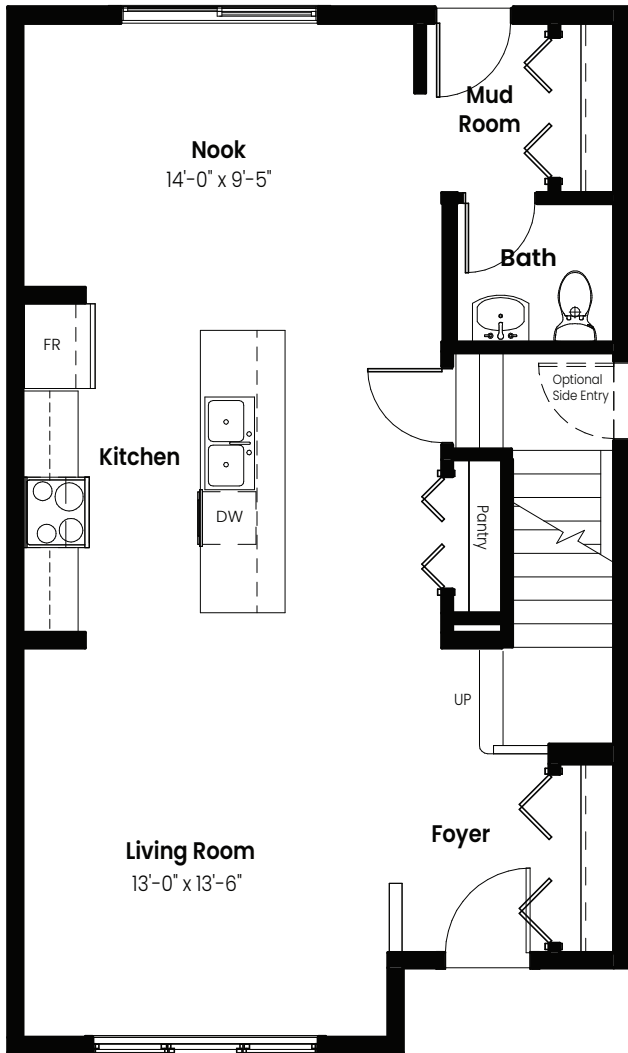


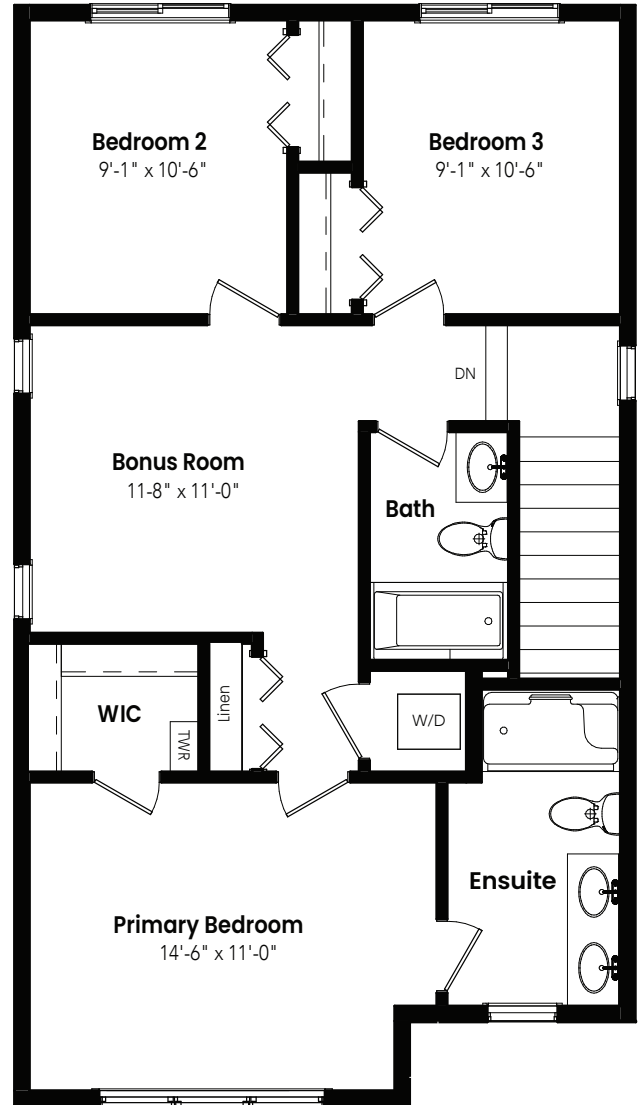
3 Bedrooms | 2.5 Bathrooms

Valley

1,624 sqft
22' Wide



Main Floor: 790 Sq Ft



Second Floor: 834 Sq Ft

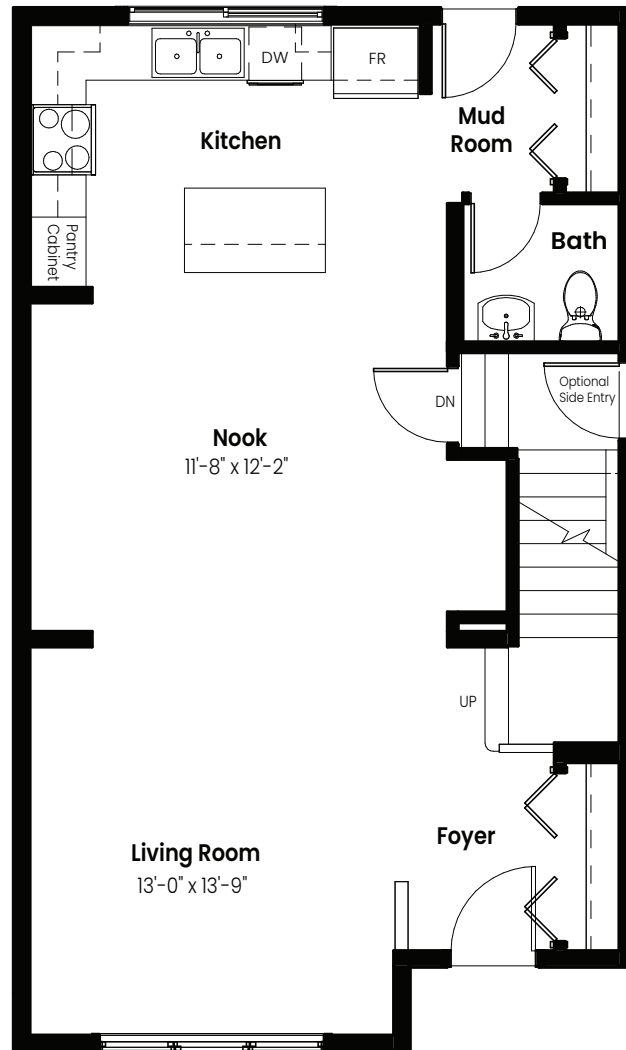


© 2026 Landmark Group of Companies Inc. All rights reserved. Any use or reproduction in whole or in part of these promotional materials without the prior written authorization of Landmark Group of Companies Inc. is strictly prohibited. Floor plans, specifications, pricing and dimensions shown are approximate and subject to change without notice. Artist rendering shown. Interior room dimensions are taken from inside of walls. Garage dimensions are taken from outside of walls. Revised on 02/09/2026.

3 Beds | 2.5 Baths | 1,624 Sq. Ft. | 22' Wide

Valley

Options



Rear Kitchen Option: 790 Sq Ft

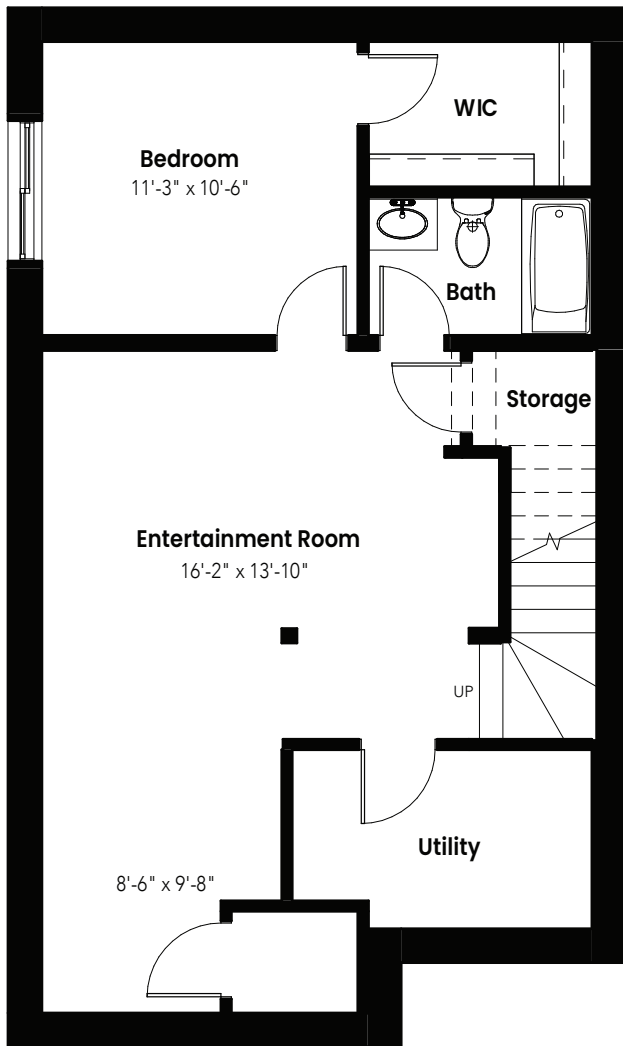


© 2026 Landmark Group of Companies Inc. All rights reserved. Any use or reproduction in whole or in part of these promotional materials without the prior written authorization of Landmark Group of Companies Inc. is strictly prohibited. Floor plans, specifications, pricing and dimensions shown are approximate and subject to change without notice. Artist rendering shown. Interior room dimensions are taken from inside of walls. Garage dimensions are taken from outside of walls. Revised on 02/09/2026.

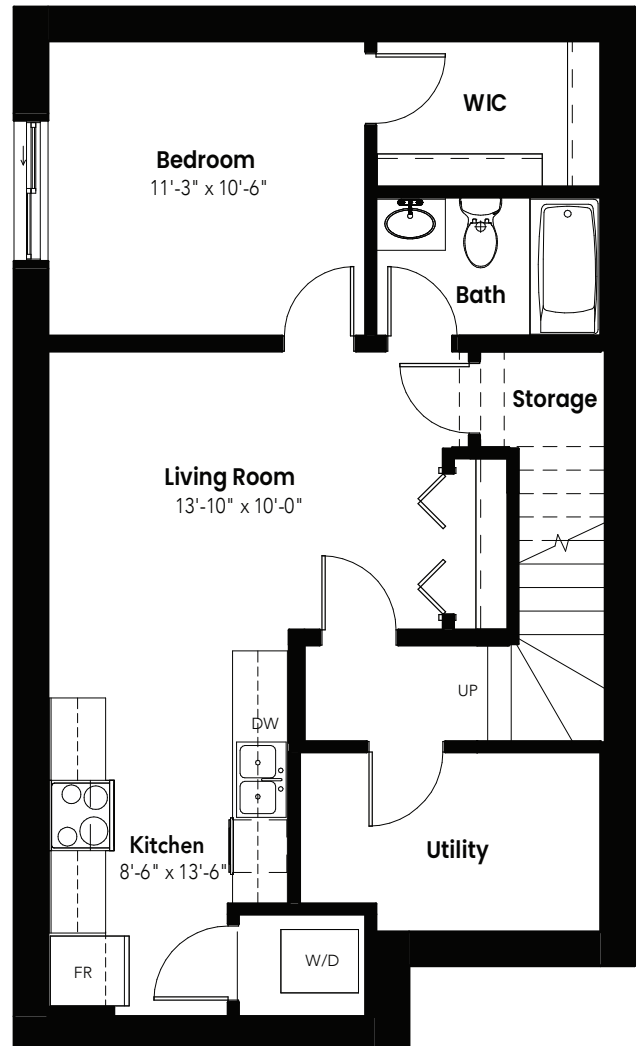
3 Beds | 2.5 Baths | 1,624 Sq. Ft. | 22' Wide

Valley

Basement Options



Basement Development Option: 581 Sq Ft



Basement Suite Option: 581 Sq Ft

